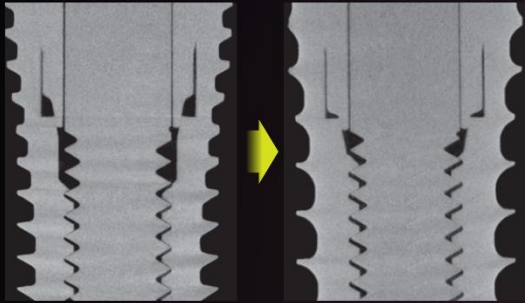


Improved Strength & Speed
***Super*Line**

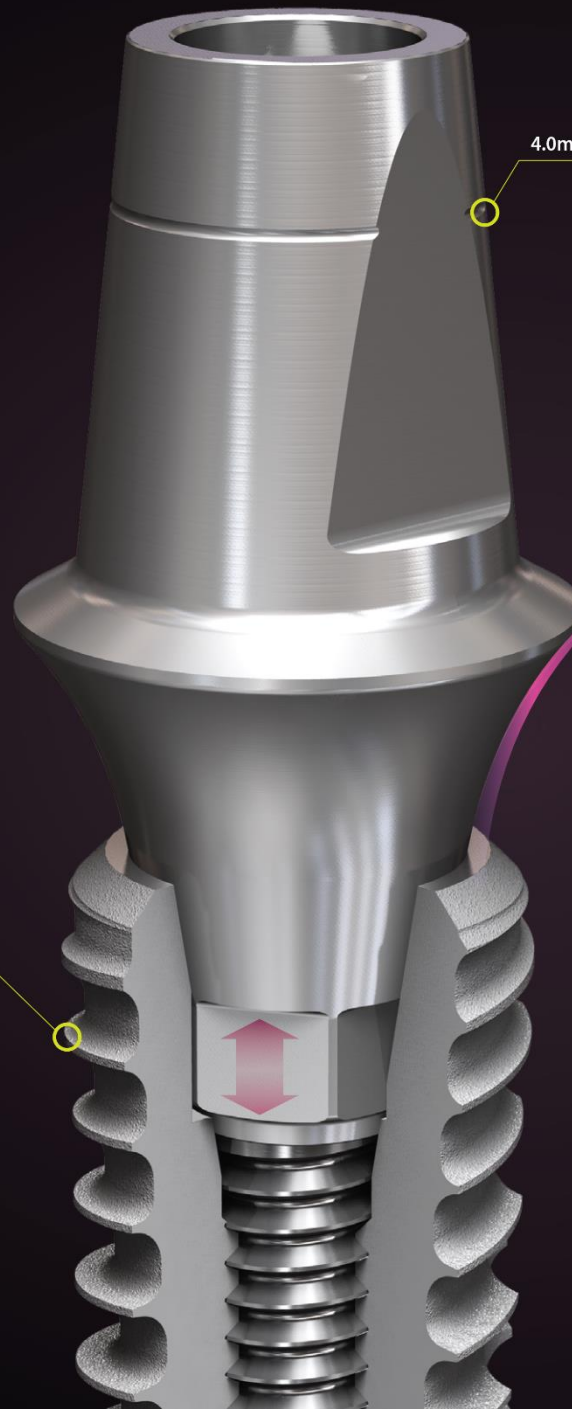
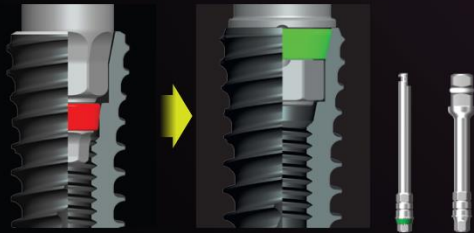


Improved wall thickness



Increased thread height and sharper thread

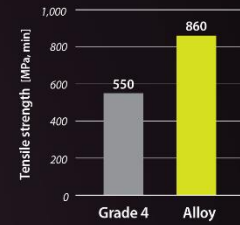
Improved delivery



4.0mm cutting groove

Joint stability & Improved strength for zirconia crown

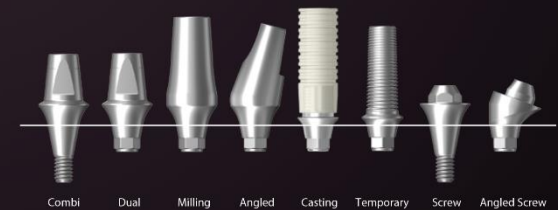
- Abutment material: Grade 4 \blacktriangleright Alloy
- Long hex design: Improved recognition



Improved soft tissue management

- Concave abutment design
- Non-coating

Compatible with the whole SuperLine & Implantium Fixture



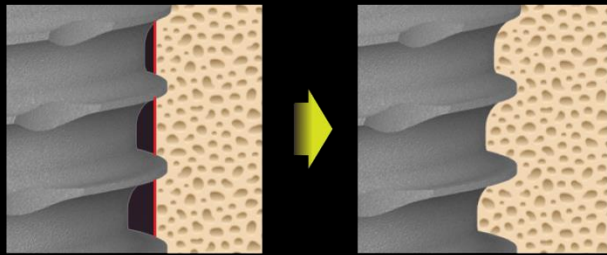
Combi Dual Milling Angled Casting Temporary Screw Angled Screw

Improved loading

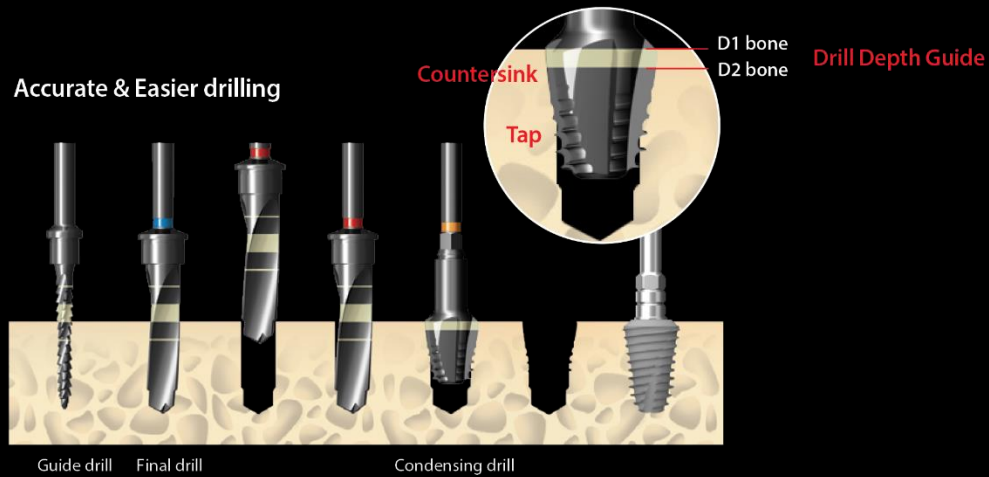
New Condensing Drill



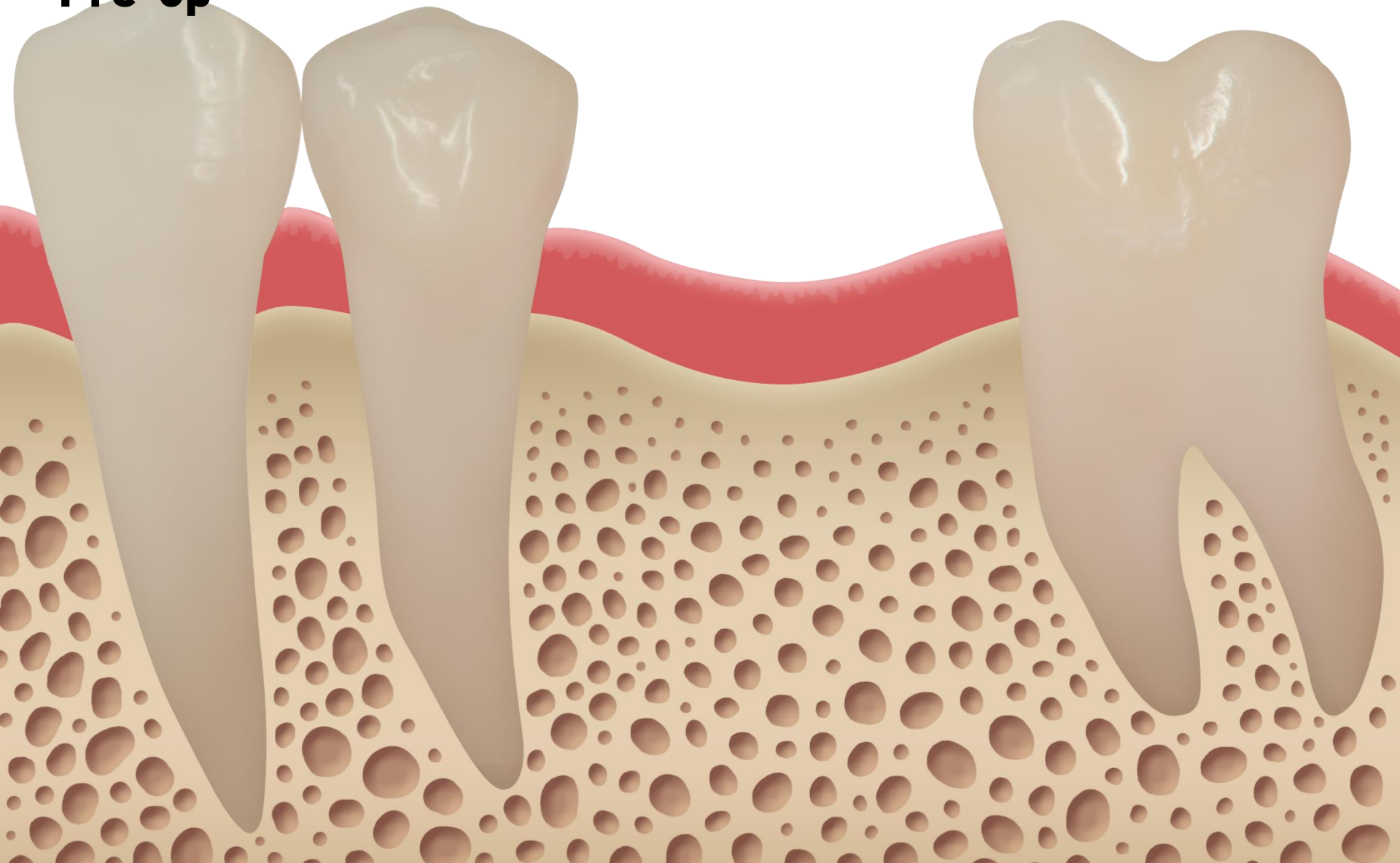
Immediate & early loading



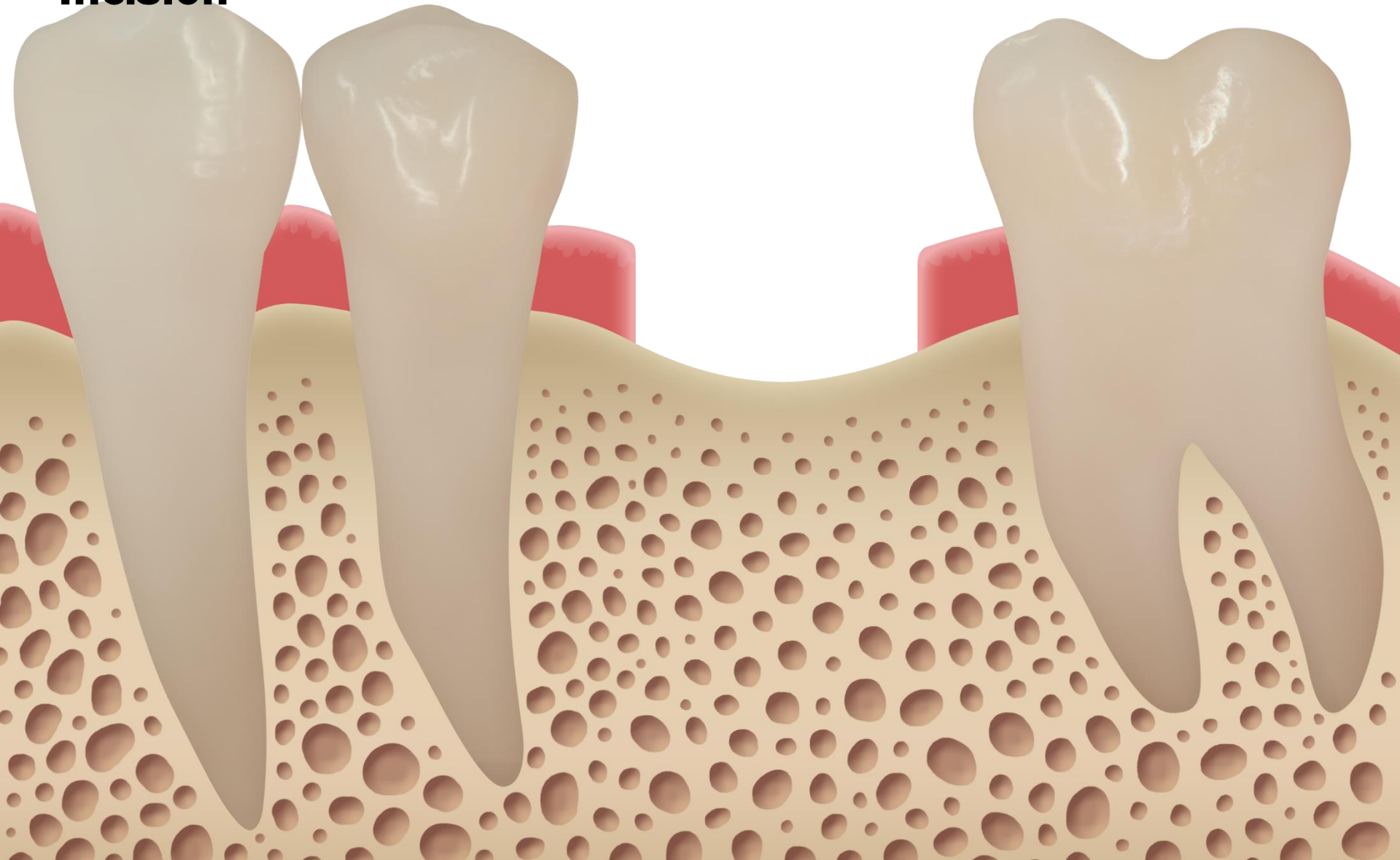
Accurate & Easier drilling



Pre-op



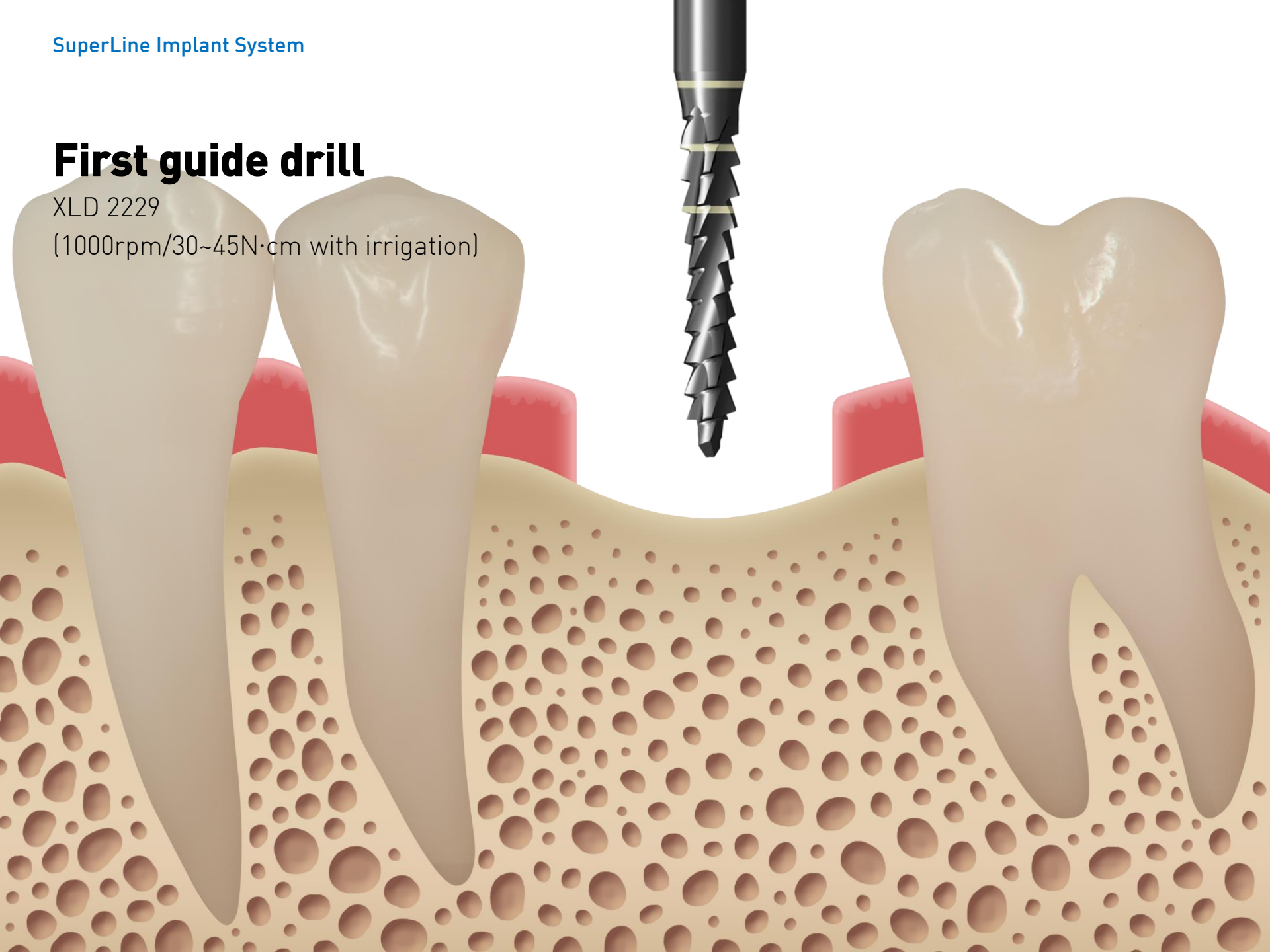
Incision



First guide drill

XLD 2229

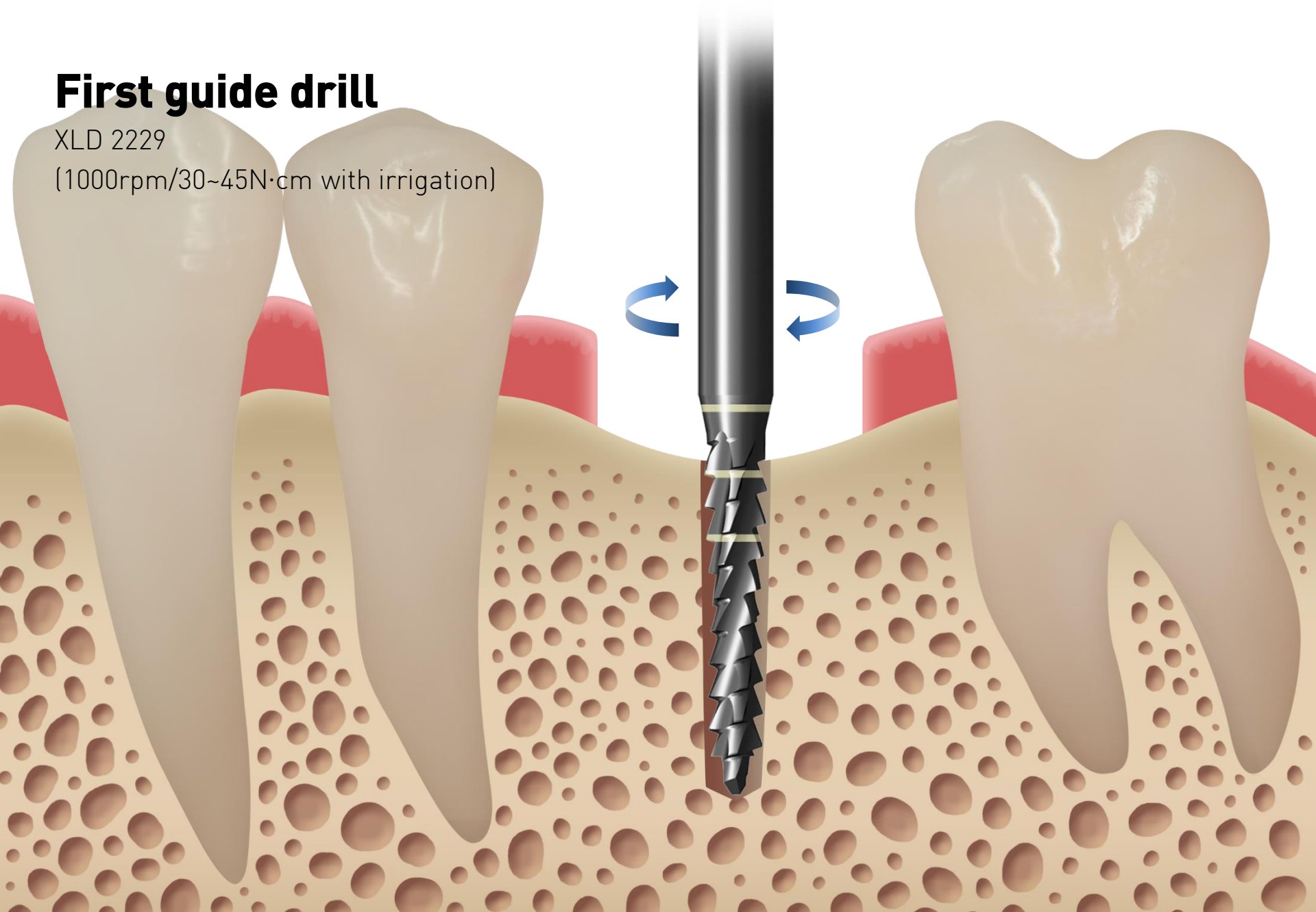
(1000rpm/30~45N·cm with irrigation)



First guide drill

XLD 2229

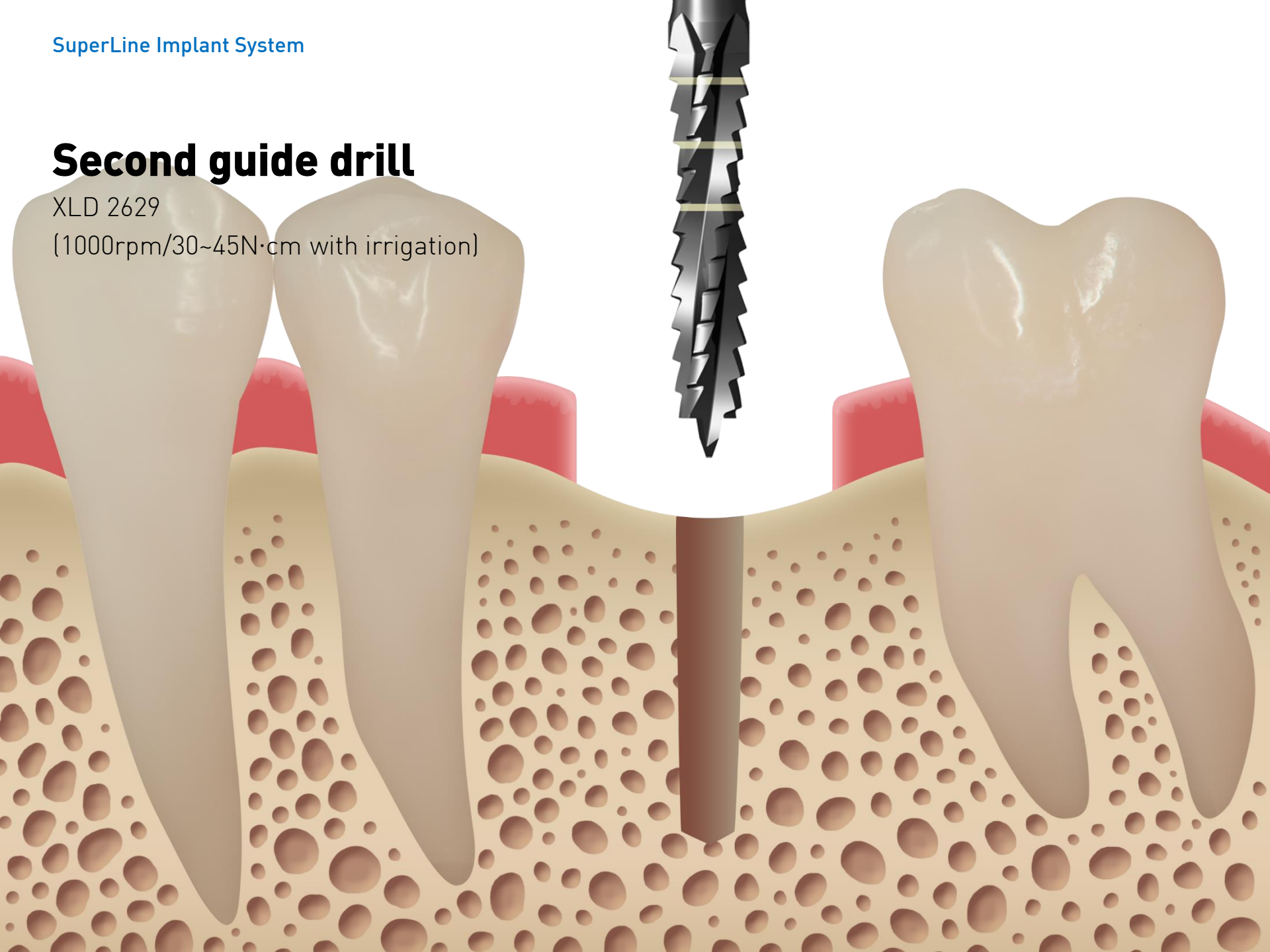
(1000rpm/30~45N·cm with irrigation)



Second guide drill

XLD 2629

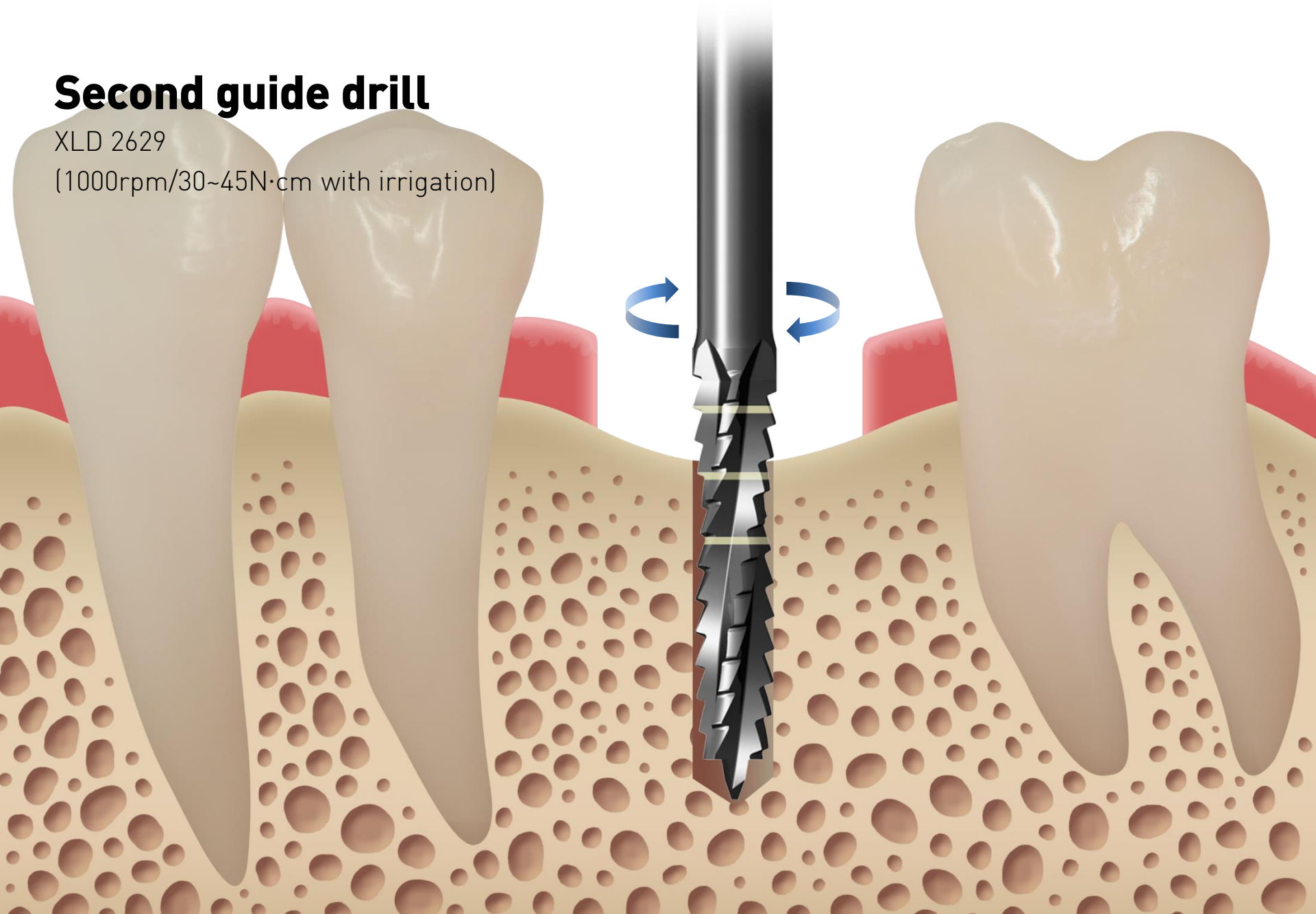
(1000rpm/30~45N·cm with irrigation)



Second guide drill

XLD 2629

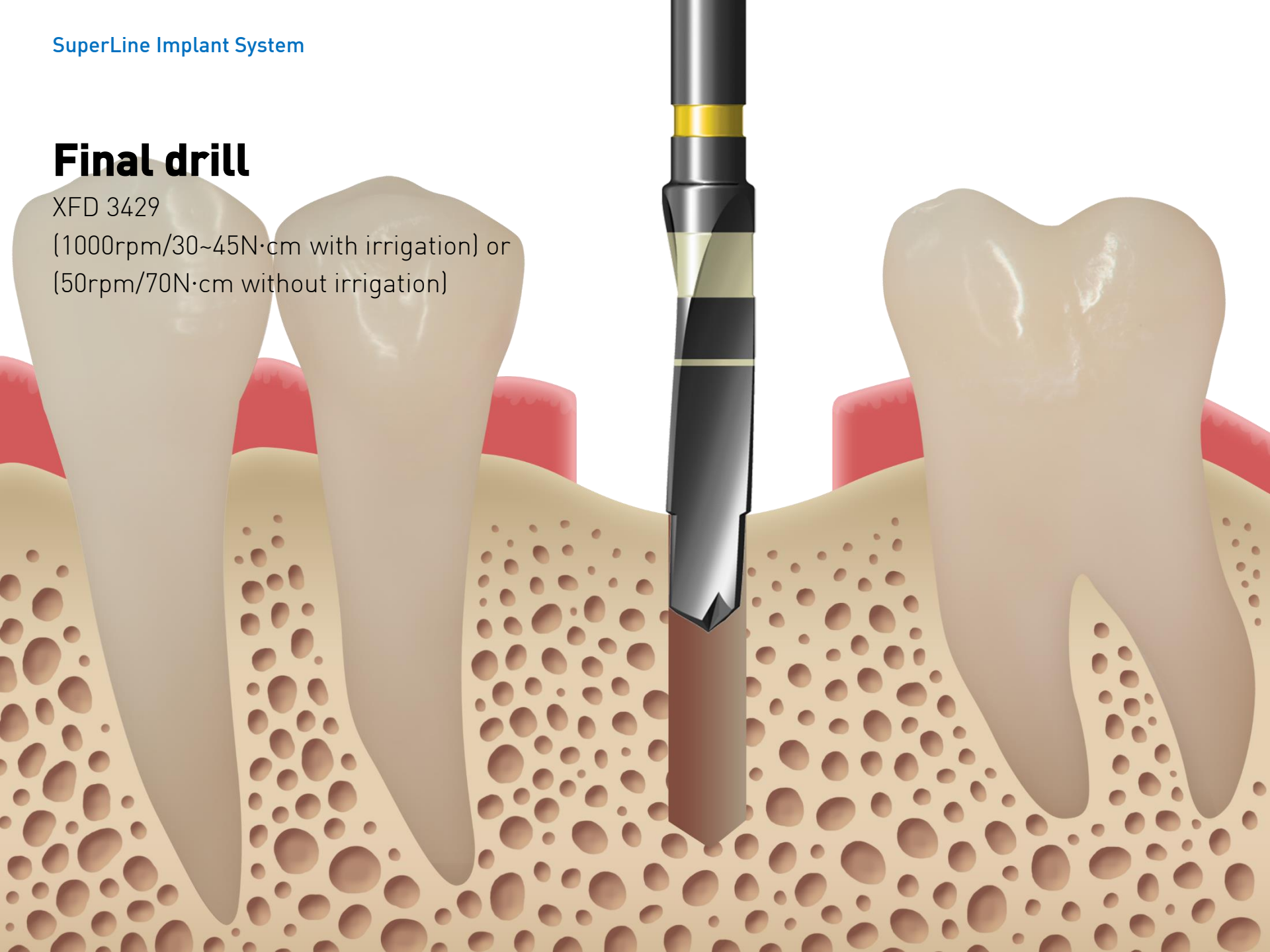
(1000rpm/30~45N·cm with irrigation)



Final drill

XFD 3429

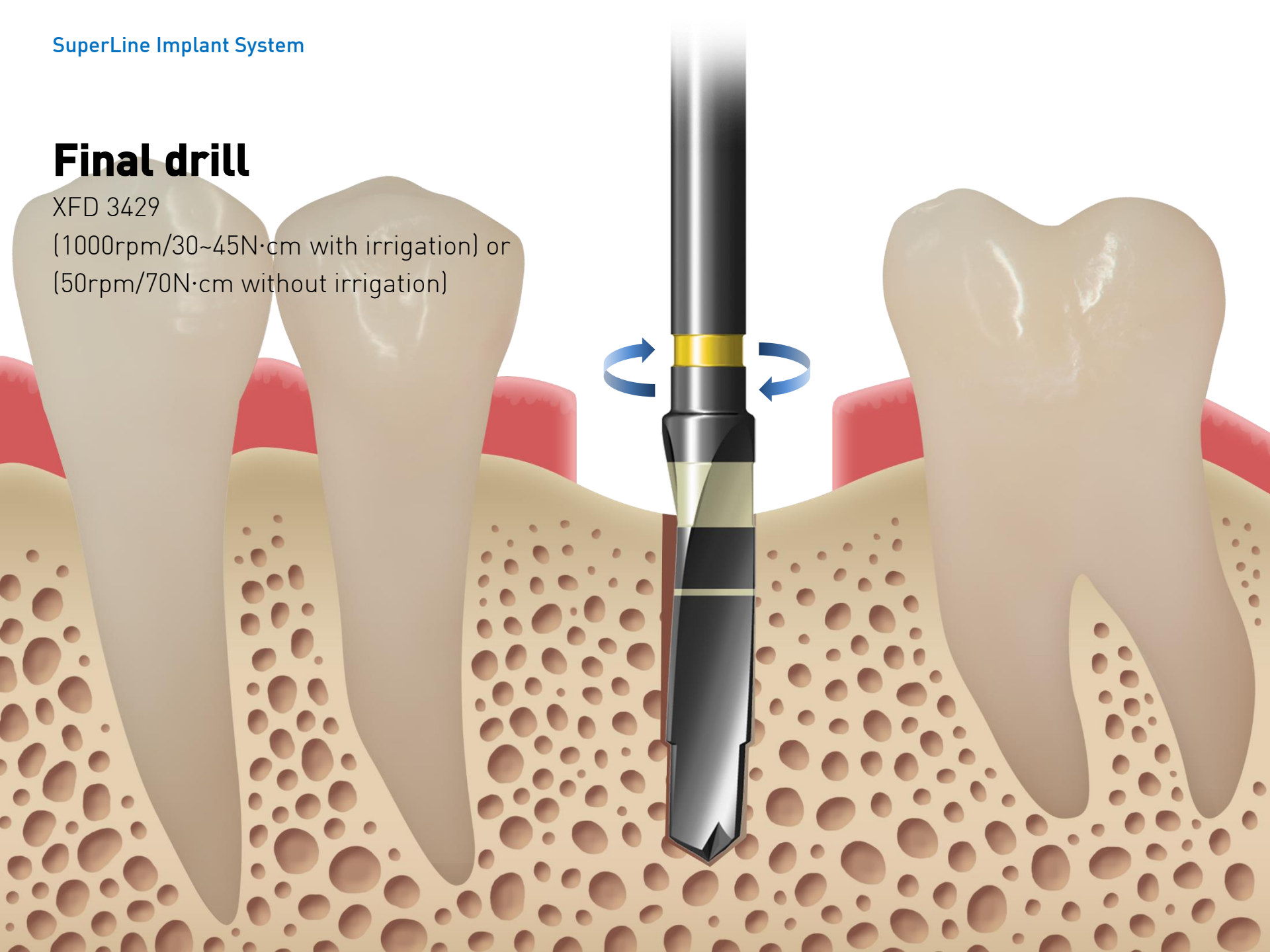
(1000rpm/30~45N·cm with irrigation) or
(50rpm/70N·cm without irrigation)



Final drill

XFD 3429

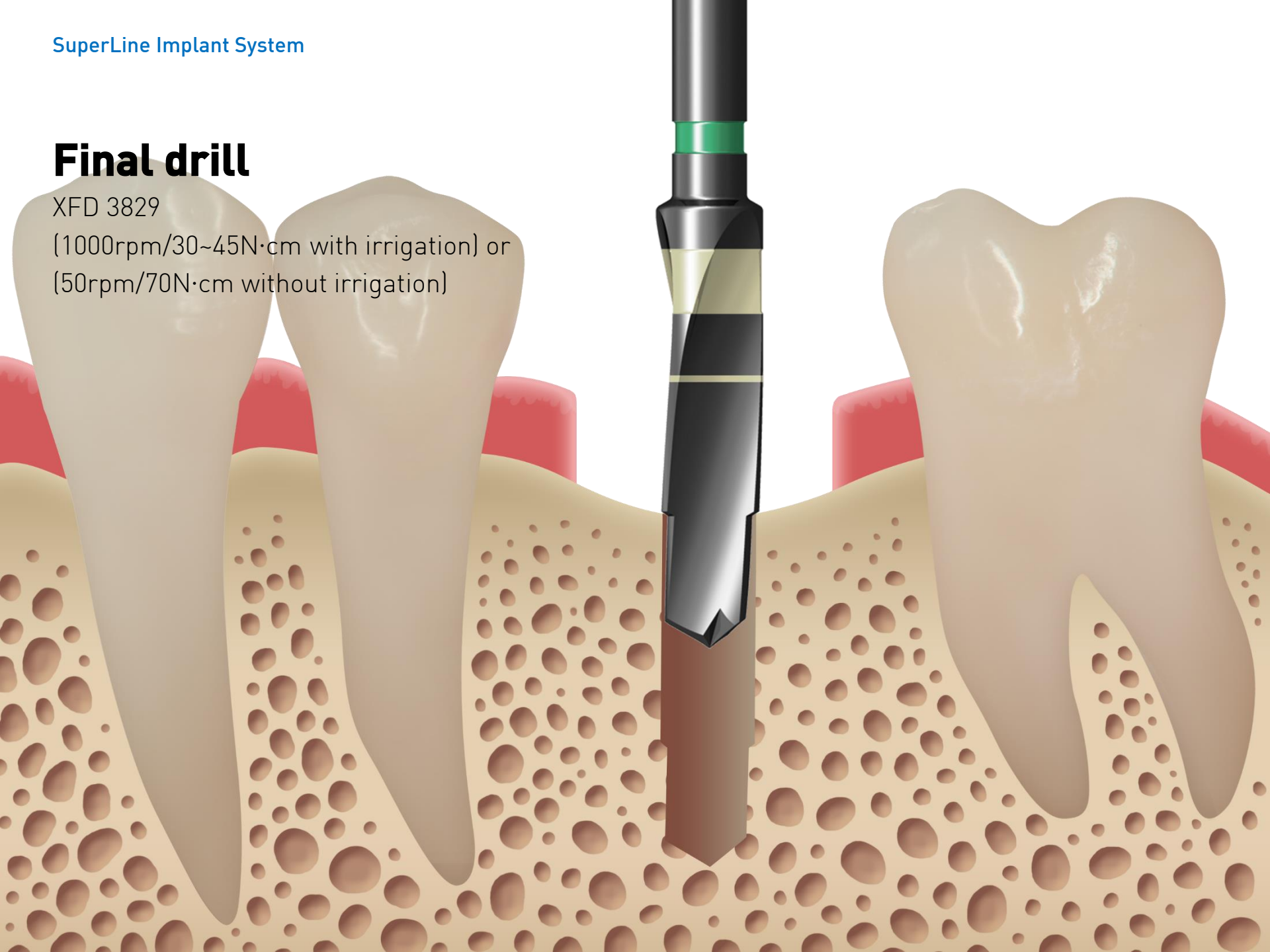
(1000rpm/30~45N·cm with irrigation) or
(50rpm/70N·cm without irrigation)



Final drill

XFD 3829

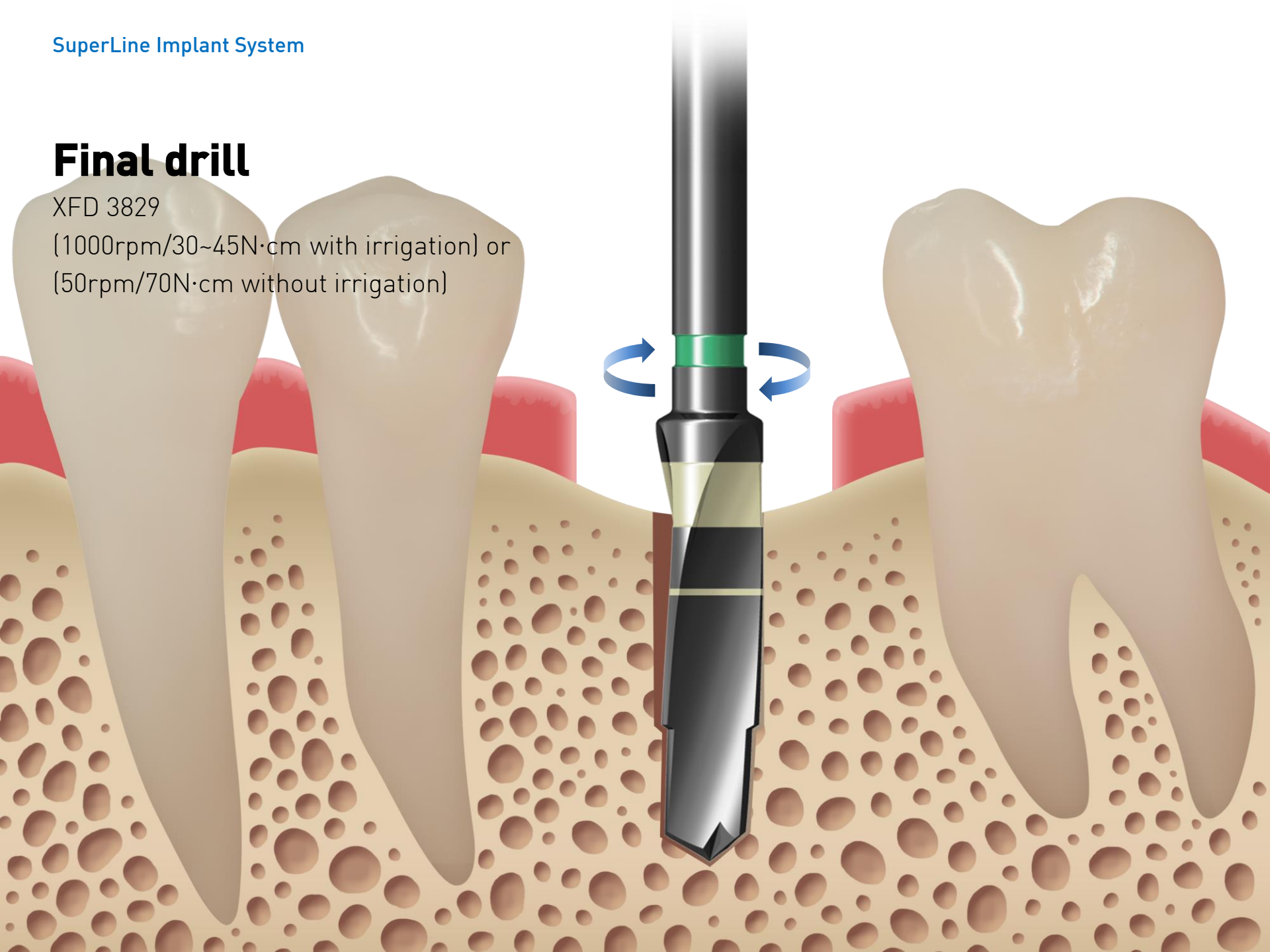
(1000rpm/30~45N·cm with irrigation) or
(50rpm/70N·cm without irrigation)



Final drill

XFD 3829

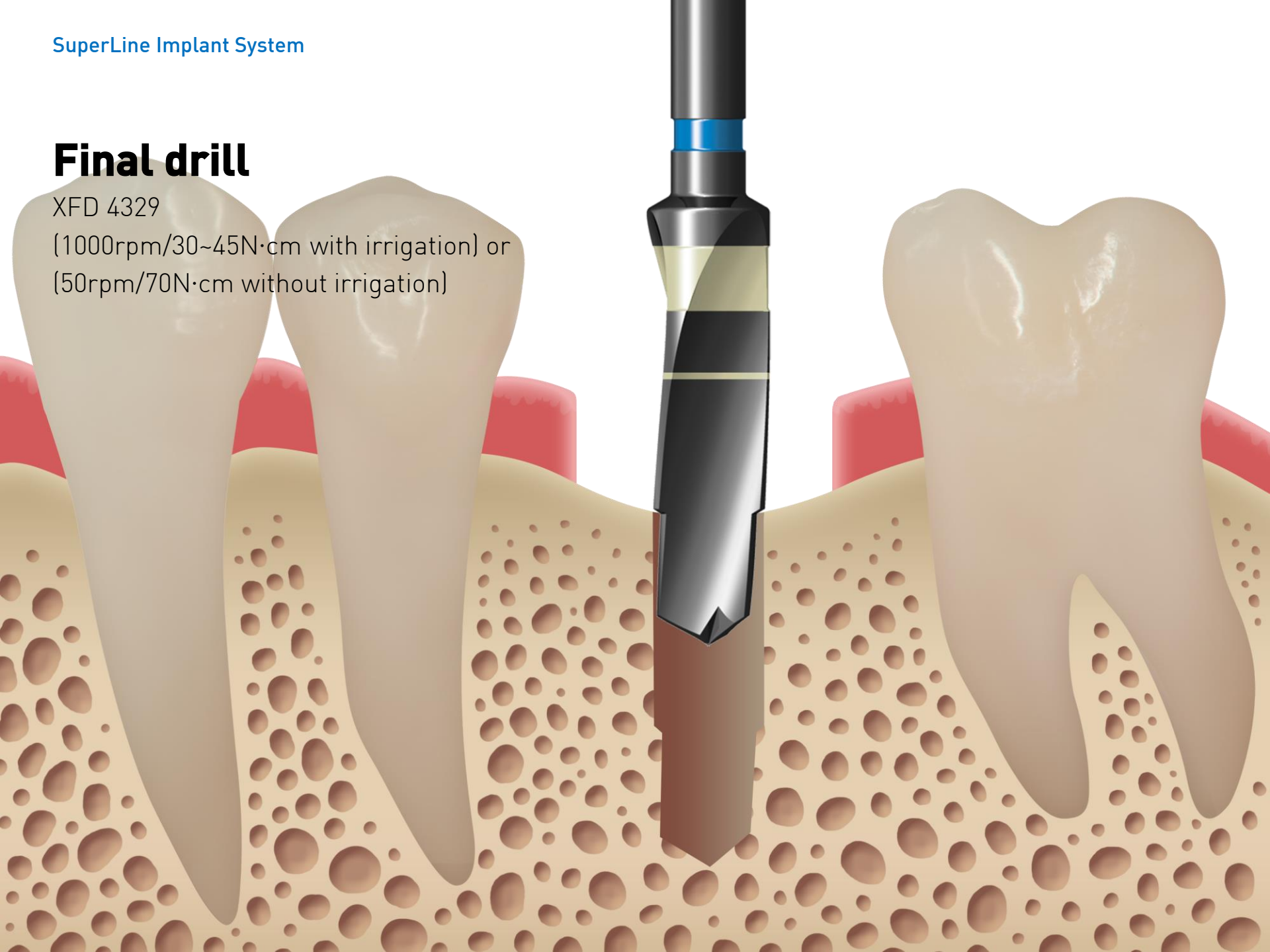
(1000rpm/30~45N·cm with irrigation) or
(50rpm/70N·cm without irrigation)



Final drill

XFD 4329

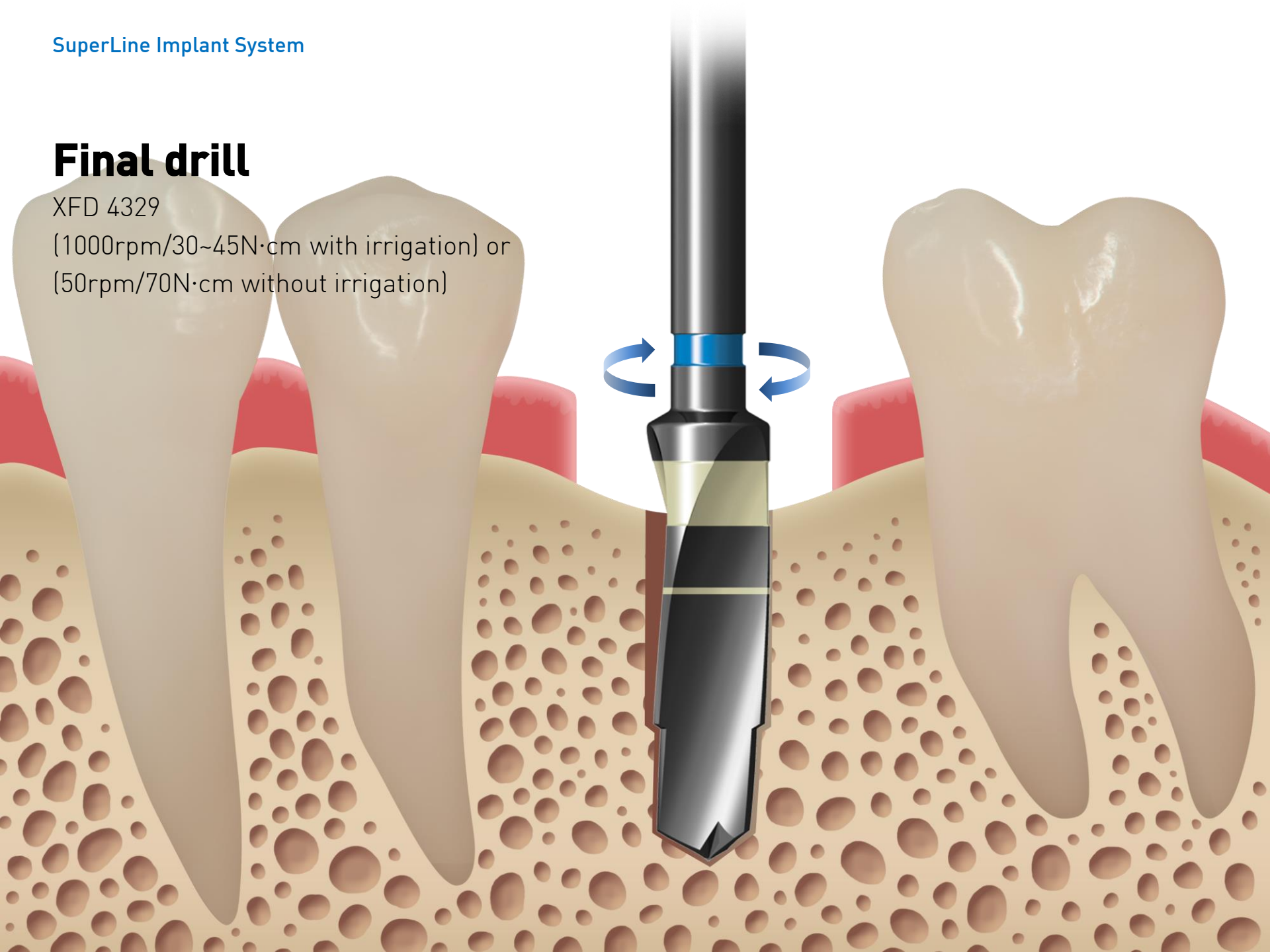
(1000rpm/30~45N·cm with irrigation) or
(50rpm/70N·cm without irrigation)



Final drill

XFD 4329

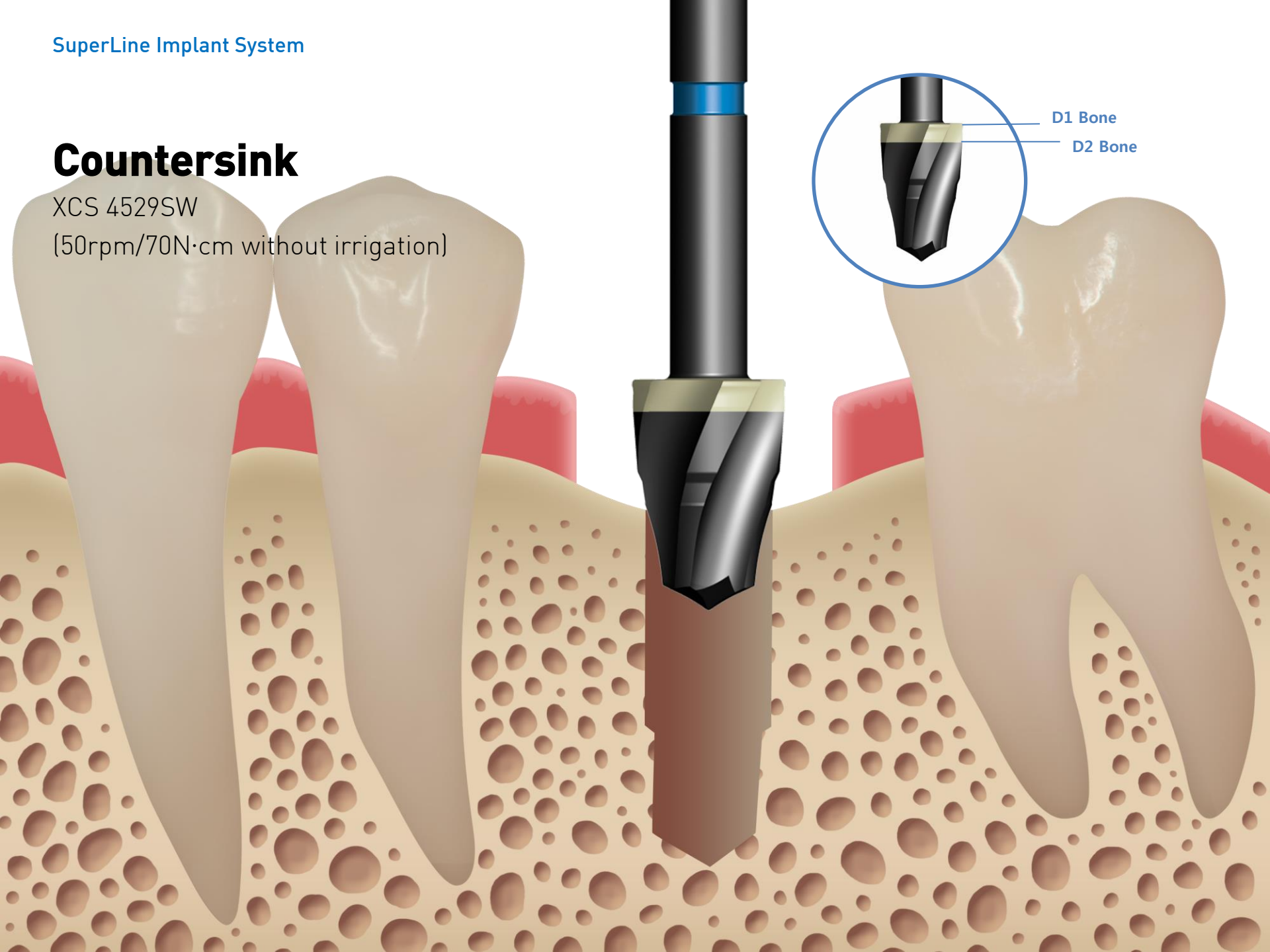
(1000rpm/30~45N·cm with irrigation) or
(50rpm/70N·cm without irrigation)



Countersink

XCS 4529SW

(50rpm/70N·cm without irrigation)



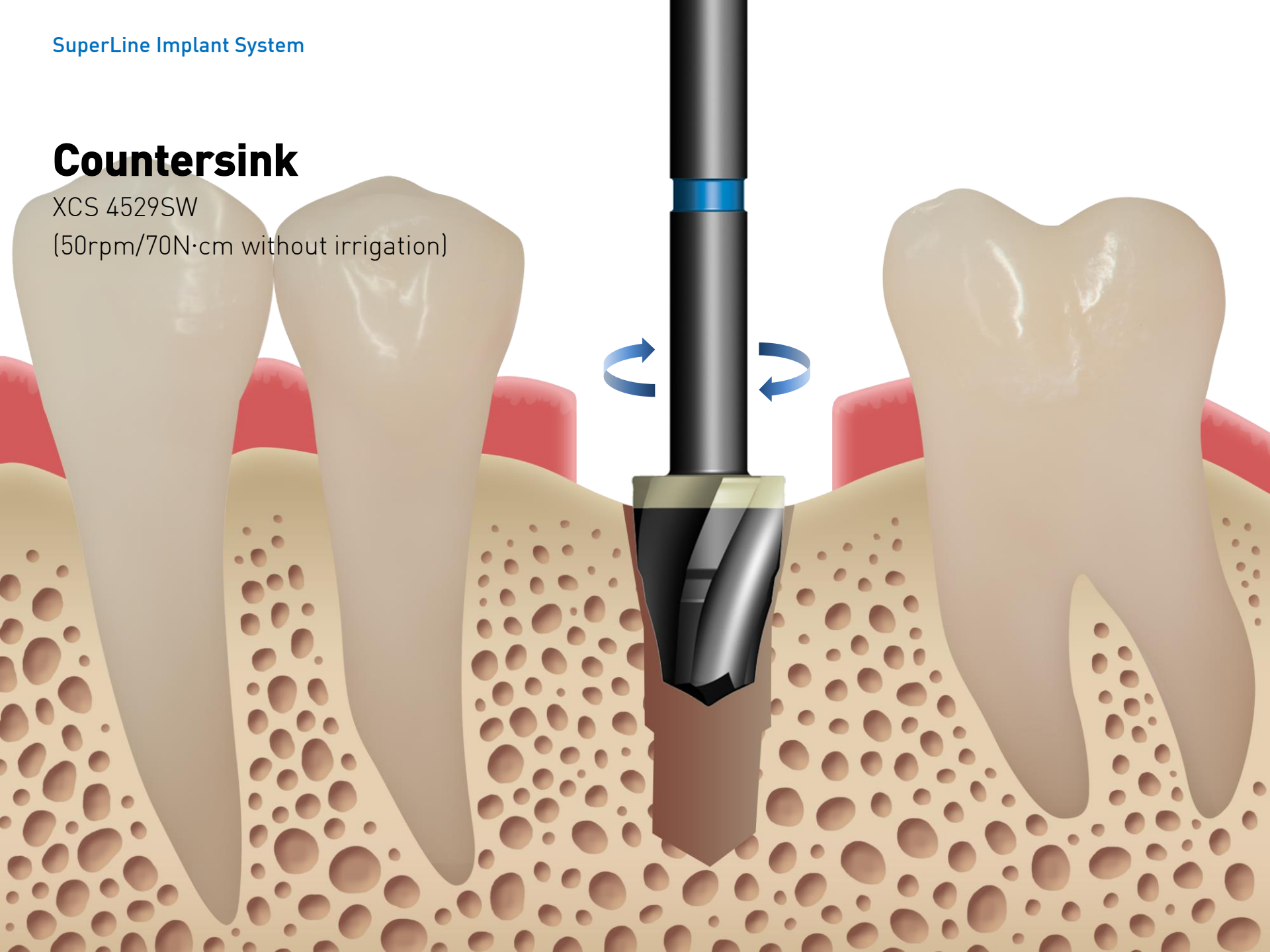
D1 Bone

D2 Bone

Countersink

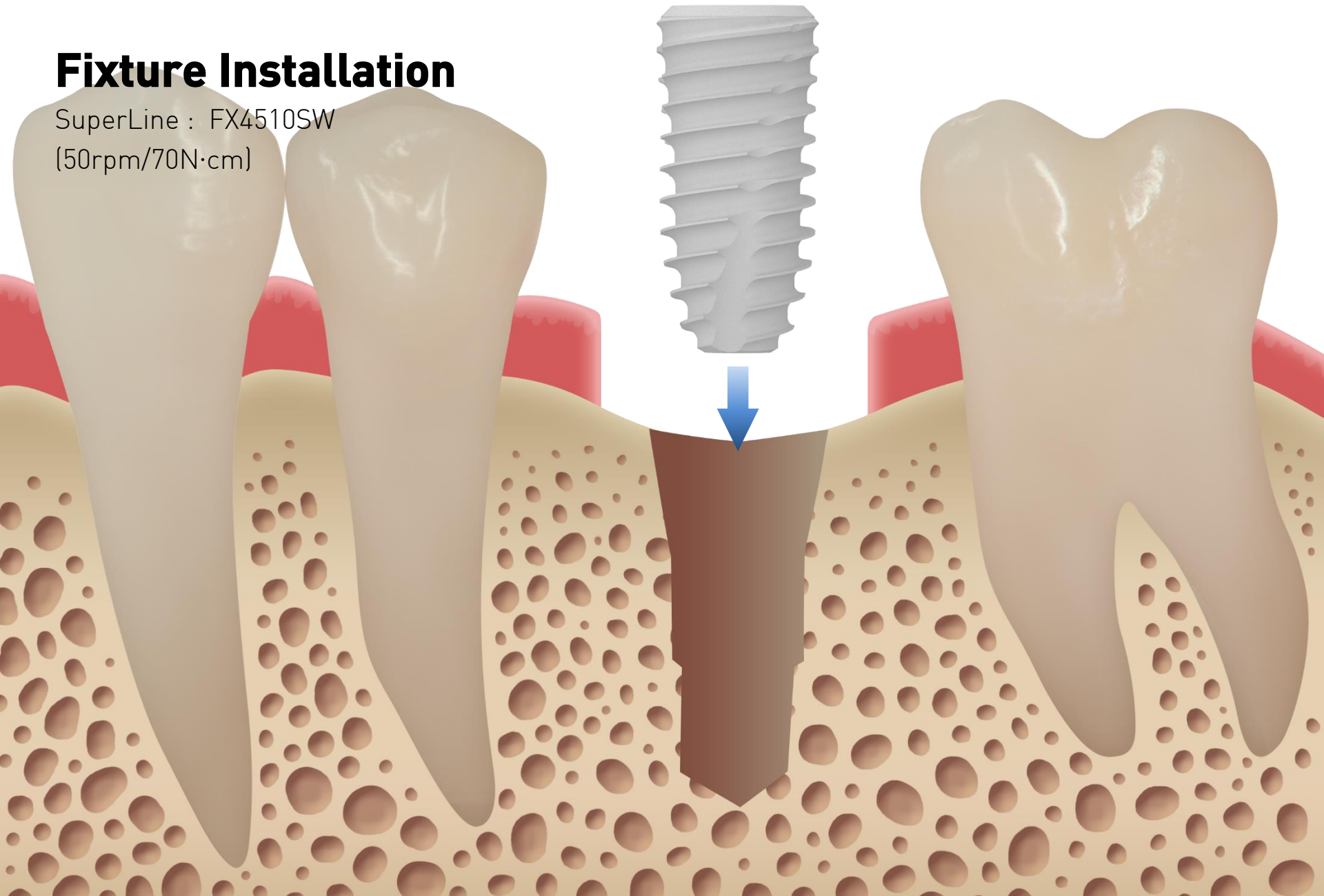
XCS 4529SW

(50rpm/70N·cm without irrigation)



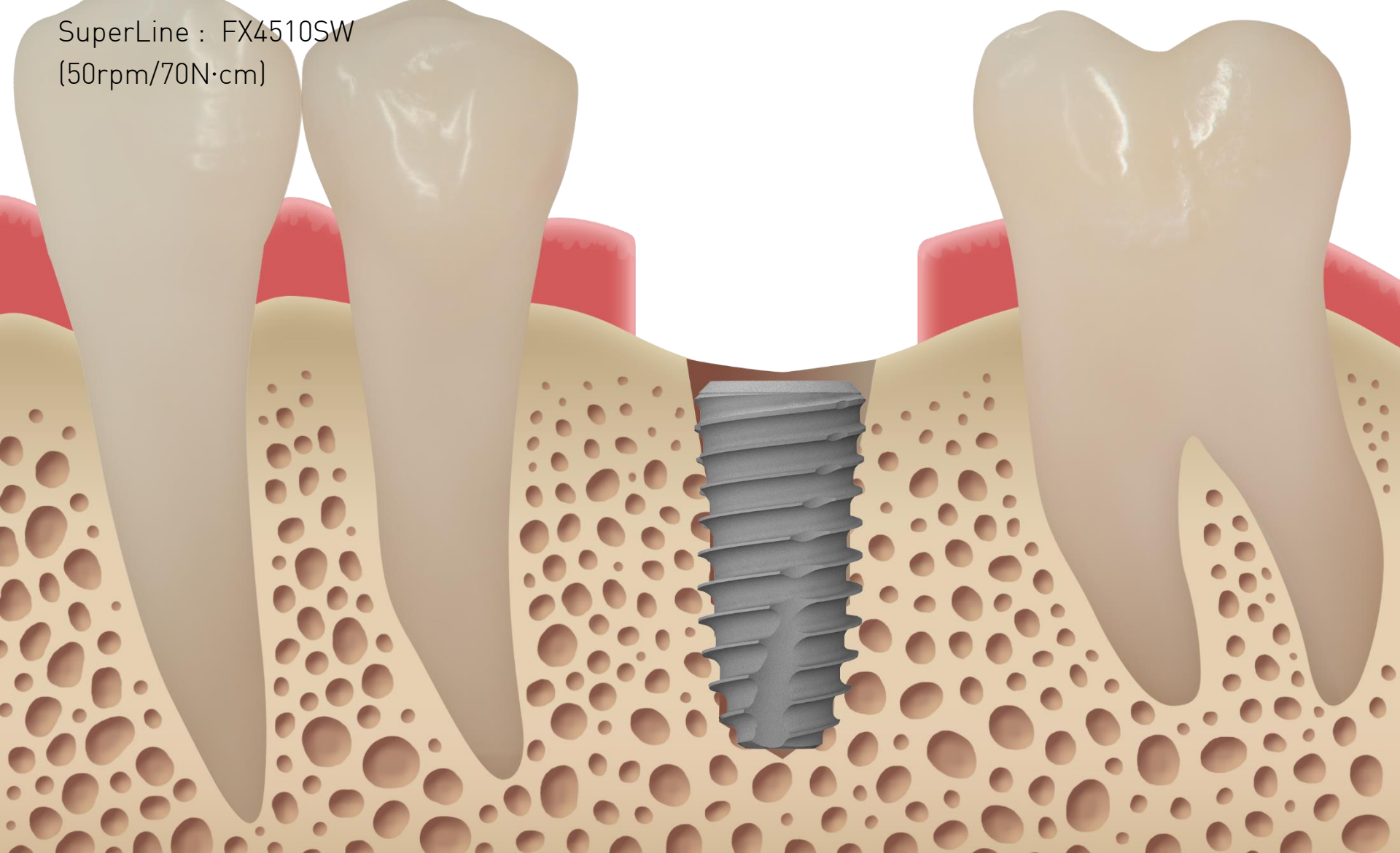
Fixture Installation

SuperLine : FX4510SW
(50rpm/70N·cm)



Fixture Installation

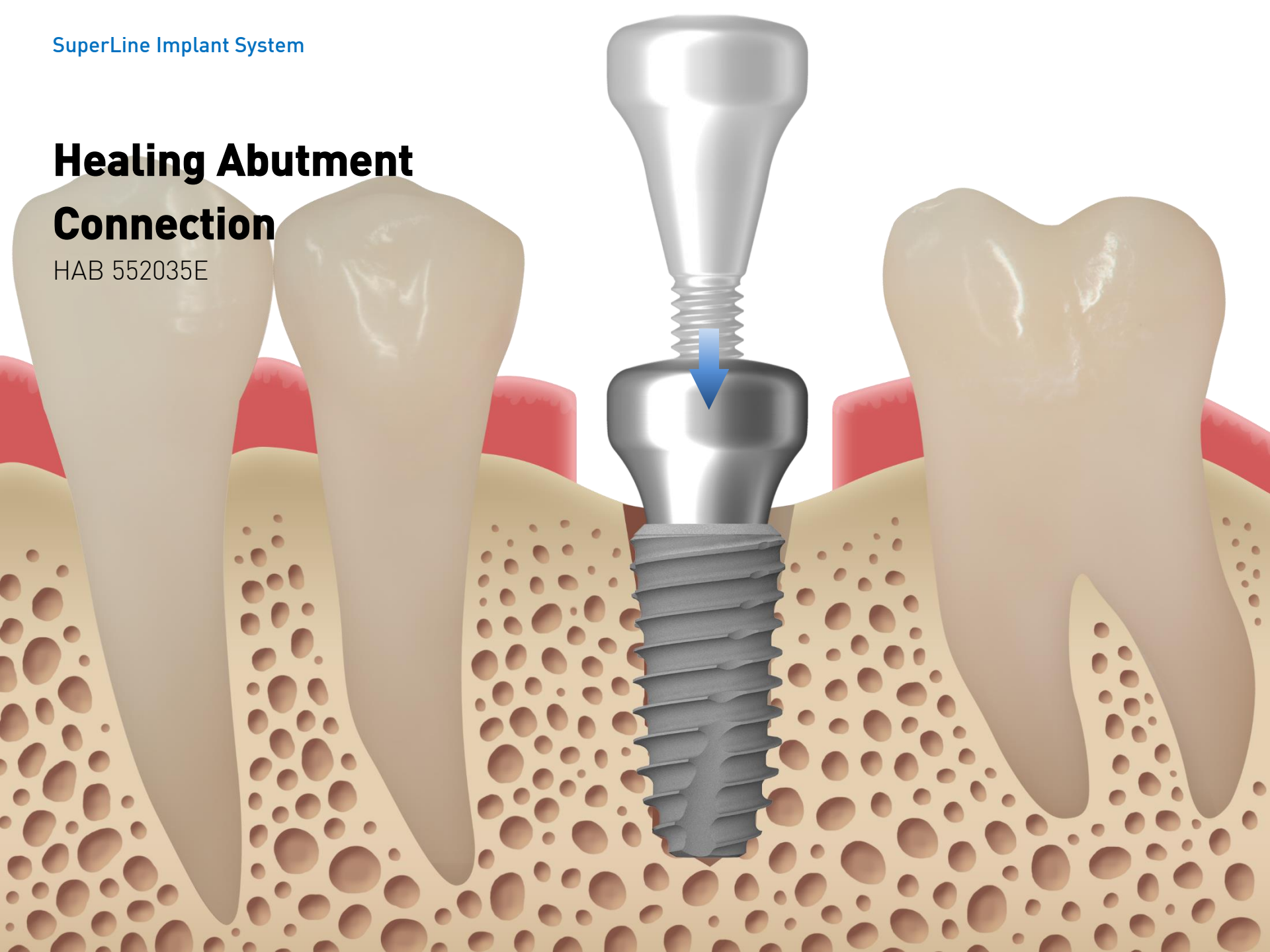
SuperLine : FX4510SW
(50rpm/70N·cm)



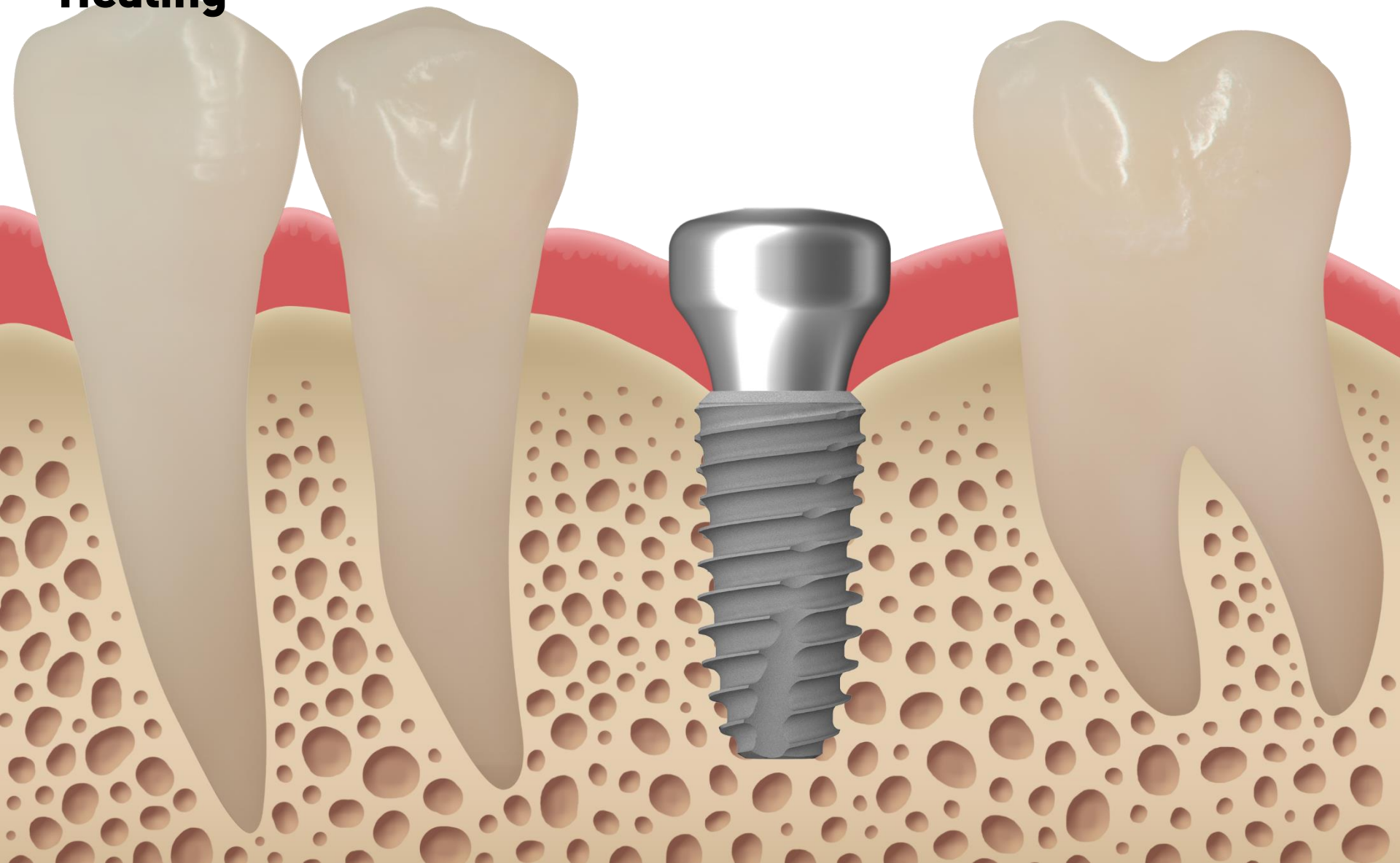
SuperLine Implant System

Healing Abutment Connection

HAB 552035E

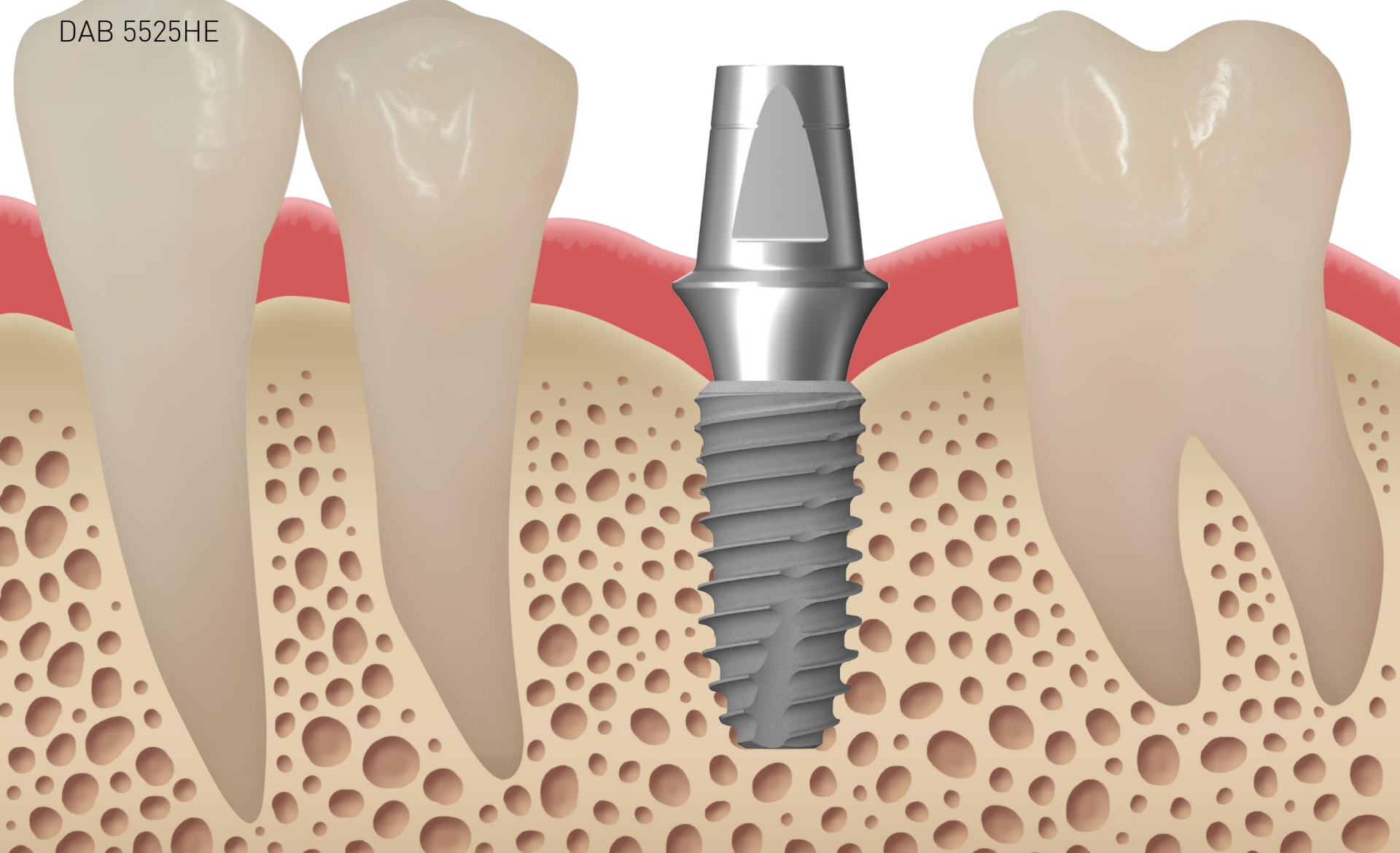


Healing



Abutment Connection

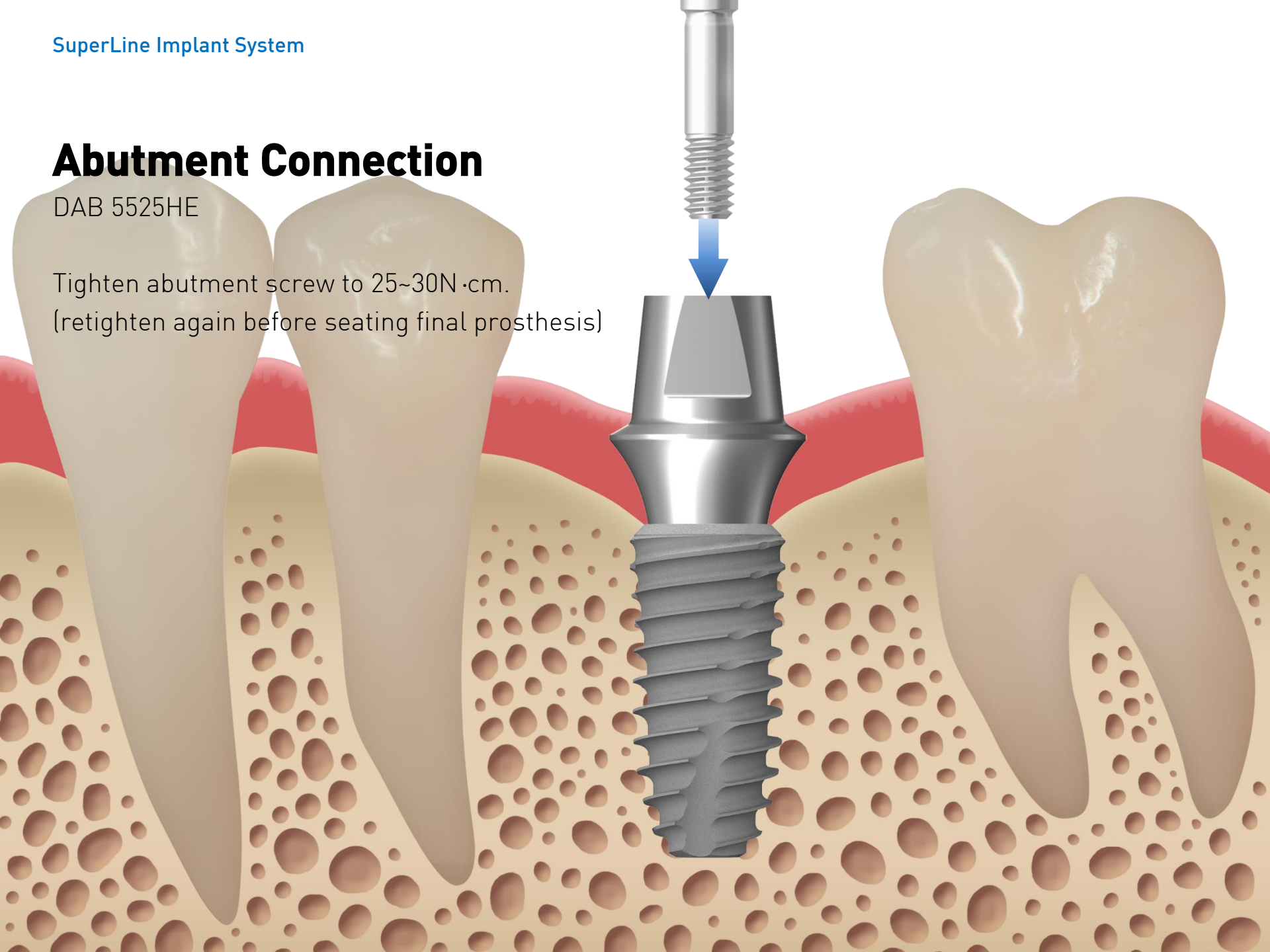
DAB 5525HE



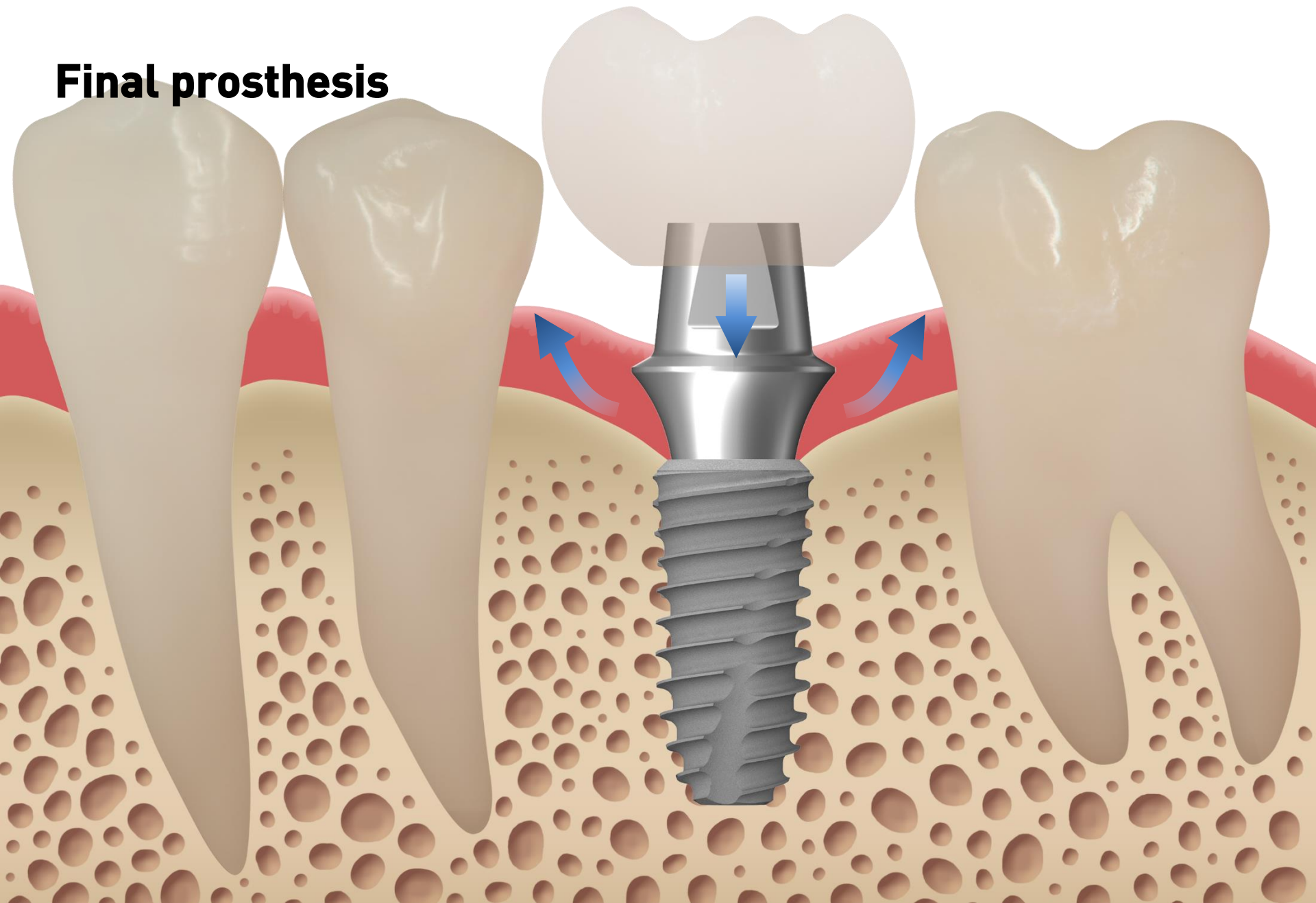
Abutment Connection

DAB 5525HE

Tighten abutment screw to 25~30N·cm.
(retighten again before seating final prosthesis)



Final prosthesis



Final prosthesis

