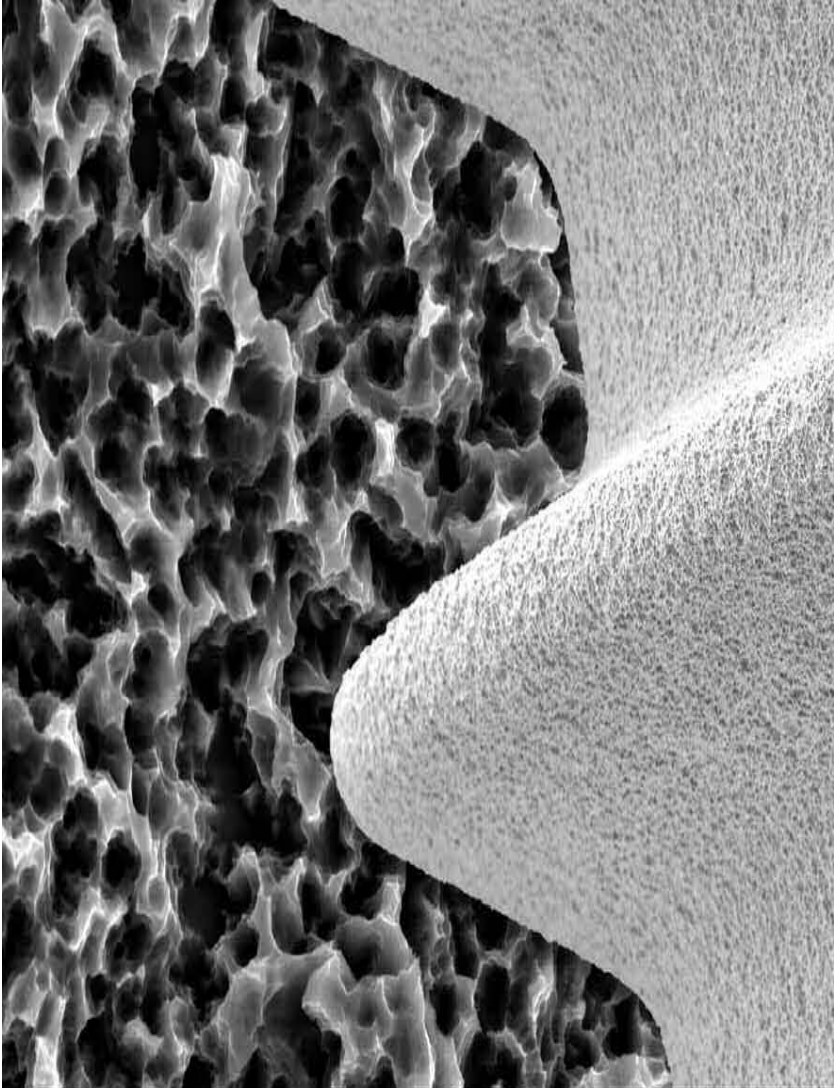


The image displays two dental models against a black background. The upper model is a light-colored, possibly wax or plaster, representation of a dental arch with a prominent upper front tooth. The lower model is a dark red, textured material, likely a resin or composite, showing a similar dental arch with a prominent lower front tooth. The text 'Dentium' is overlaid on the upper model, and 'SlimLine System' is overlaid on the lower model.

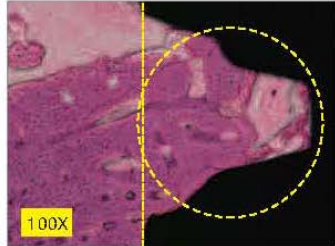
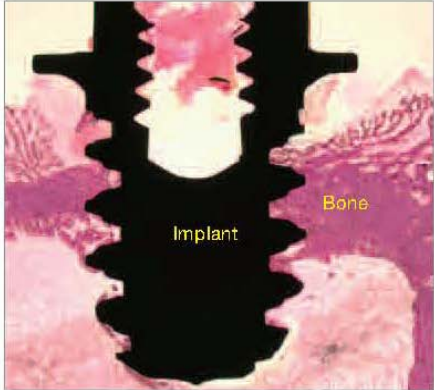
Dentium

SlimLine System

1. S.L.A. surface

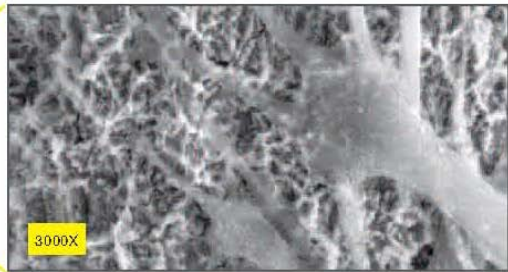
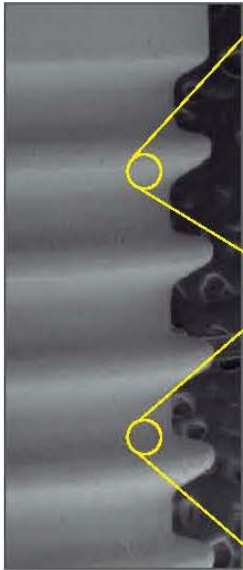


In vivo test



Fast new bone formation inside the thread.

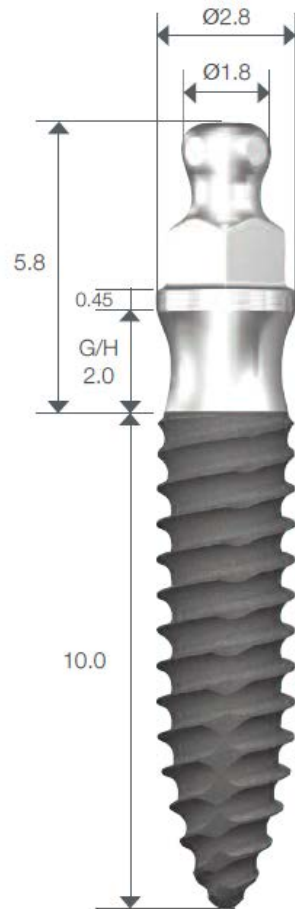
Human osteoblast



Cell number 3×10^4 , After 7 days of cell culture

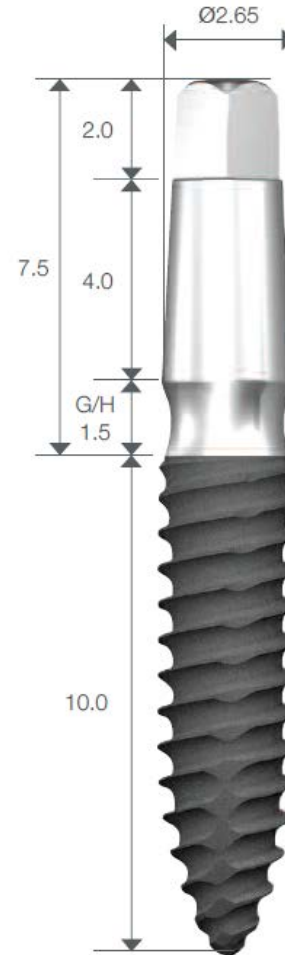
2. Design of two types

Mini Ball Type



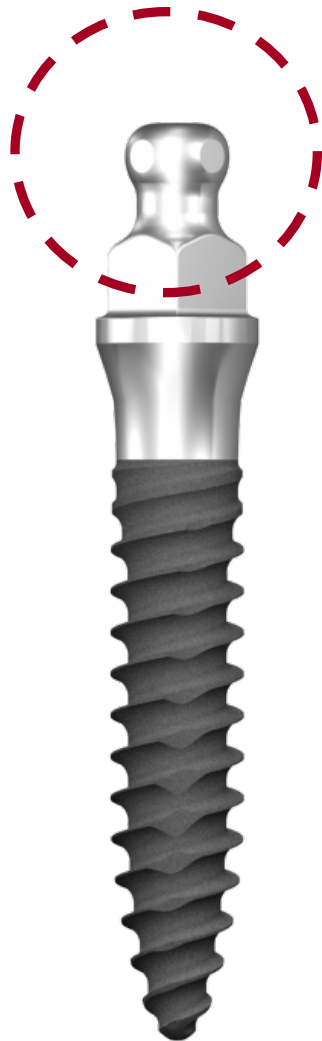
IBS282010

Fix Type

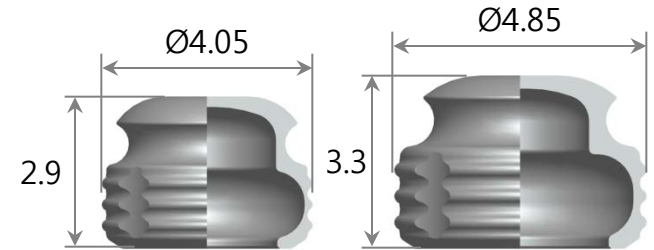


IUS281510

3. Mini Ball attachment



Minimal-size
Denture Socket
(Only Denture)



Mini ball size $\text{Ø}1.8$

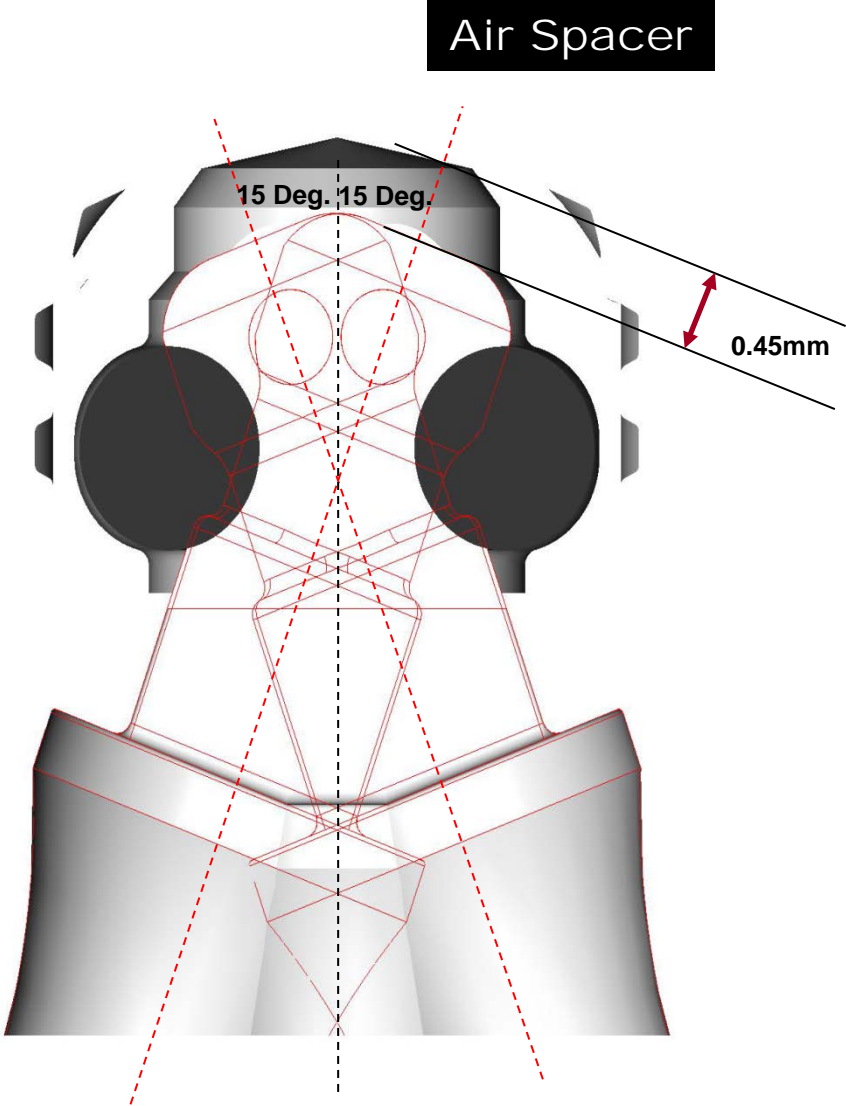
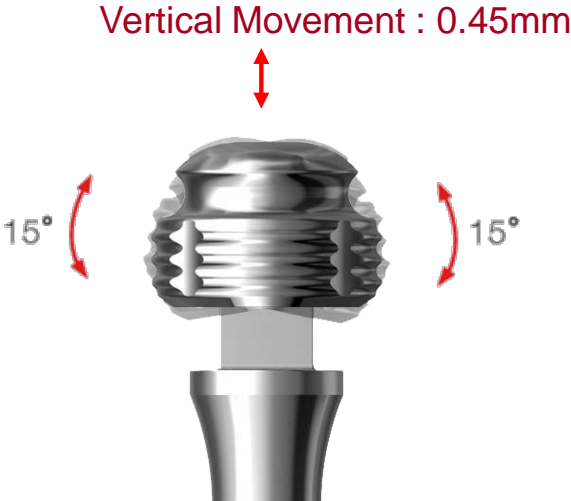


Esthetical Prosthesis,
Restoration Easy

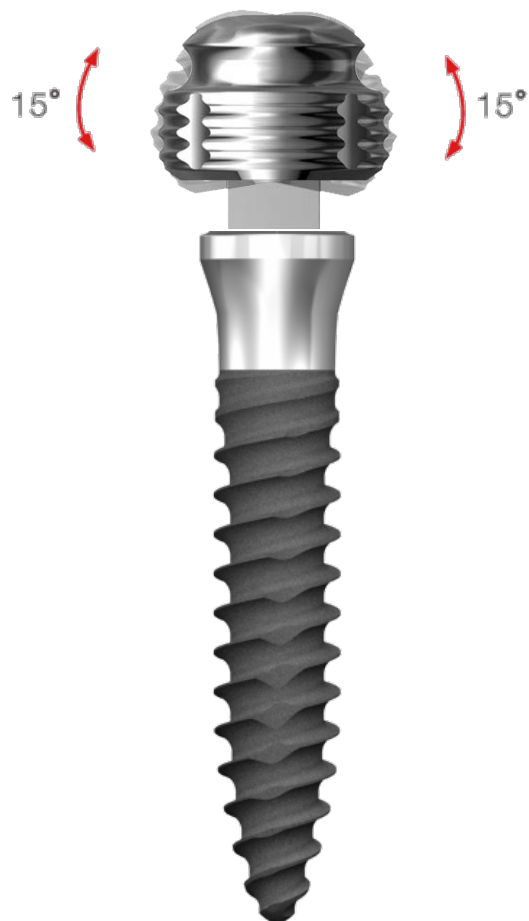


3. Mini Ball attachment

Tilting Angle

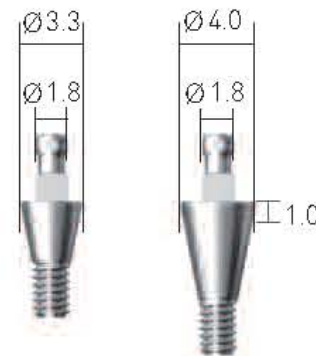


3. Mini Ball attachment



← Tilting Angulation 30°

Mini Ball Size →



Can be used in case of
Complicated Path

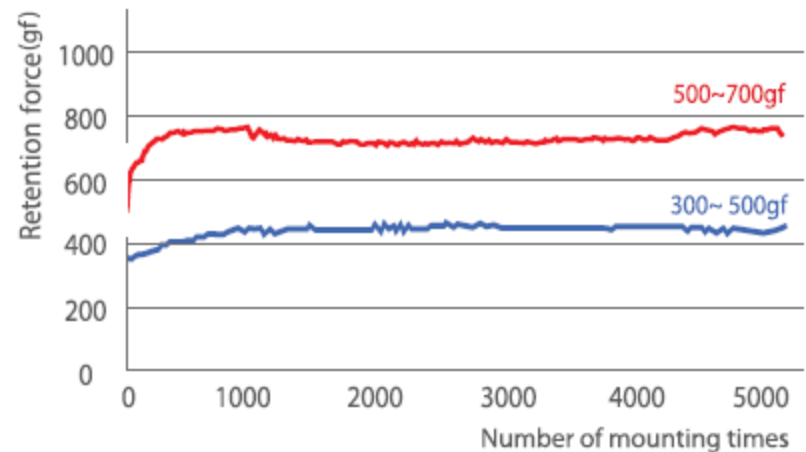


3. Mini Ball attachment

- Dentium Socket's O-ring made by Special Material
(NBR : acrylonitrile-butadiene rubber)
- Retention Force maintains over 12months
(Should replace the retentioner at least every 6 month.)



Mini O-Ring Retention Force

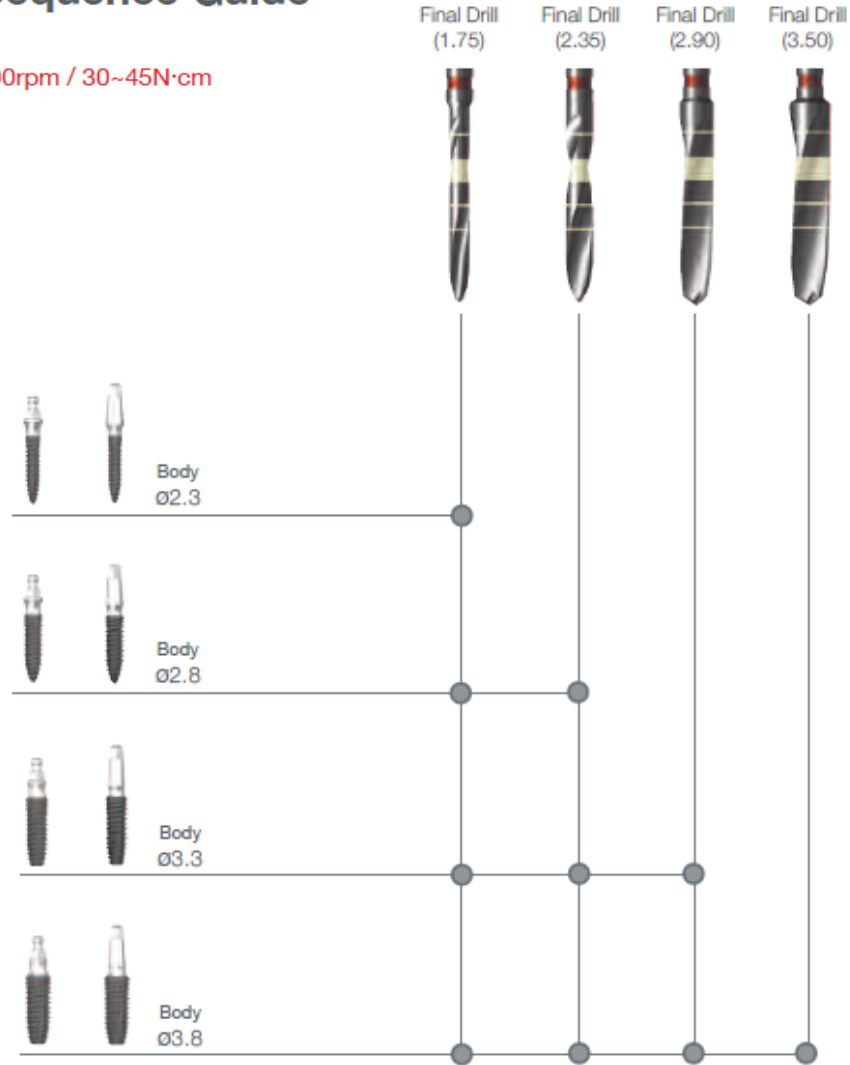


4. Drilling Sequence Guide

· Final Drill: 1,000rpm / 30~45N·cm

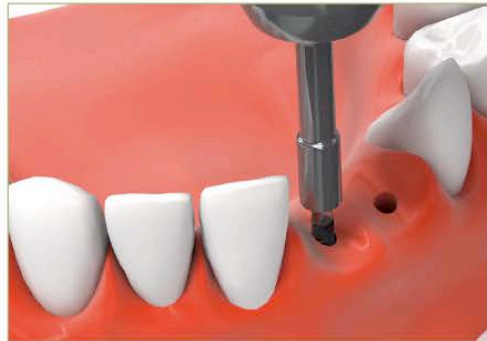
Drilling Sequence Guide

· Final Drill: 1,000rpm / 30~45N·cm



5. Surgical process

Implantation Process:



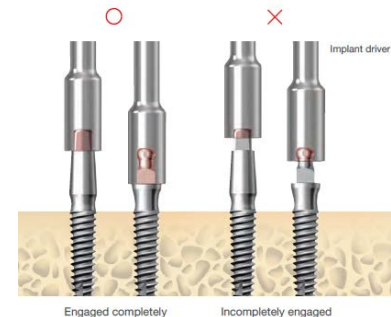
By handpiece



By ratchet

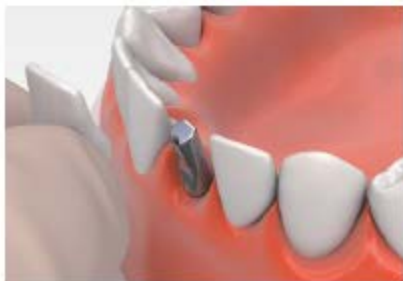
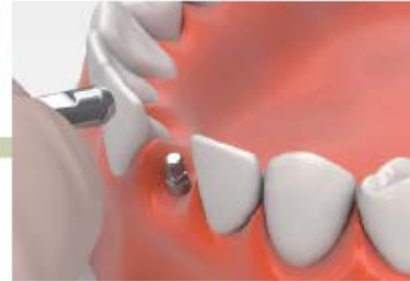
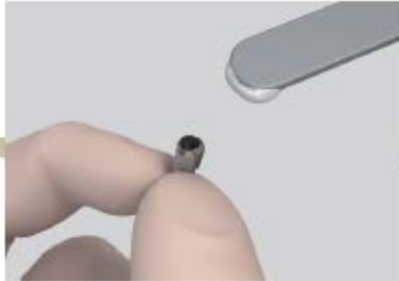


- Open the bottle.
- Move the implant to surgery point by holding the cap. Do not disassemble the implant and cap yet.
- Initiate implanting by rotating the cap directly by hand.
- Linkage in the cap will become deformed as rotation force reaches to 5N·cm approximately.
- Remove the disengaged cap, and continue implantation using the insertion tool in the surgery kit.



6. Prosthetic process

Fix Type Angled Abutment Cementation:



7. Prosthetic Manual

Ball Type Fixture

Chairside



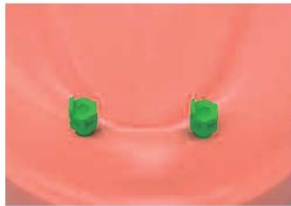
SlimLine mini ball type fixture.



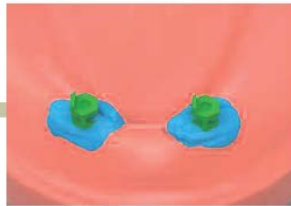
Fixture installation.



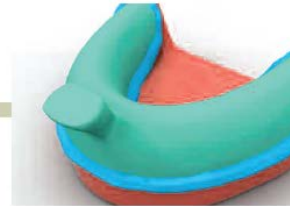
Produce the individual tray for denture impression



Affix the impression coping on the mini ball type fixture.



Apply the impression material.



Take the final impression with the prepared individual tray.



Remove the tray from the patient's mouth.

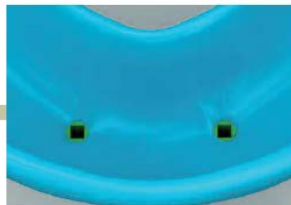
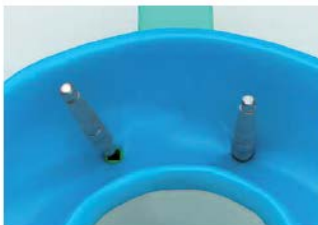


Image of the set final impression (with impression coping).



Ball analog

Lab Side



Insert analogs into the coping embedded in impression.



Create the master model.

7. Prosthetic Manual - Indirect

Lab Side



Socket spacer.



Fabrication of the denture with conventional method.



Secure spaces for the female sockets.



Assemble the female sockets onto the ball analogs that are embedded in the master model.



Apply the resin to the secured area.



Position the denture on the master model and wait for it to set completely.



Female sockets are placed in the denture.



Polish the denture.



Denture delivery.

Chairside

7. Prosthetic Manual - Direct

Lab Side



Socket spacer.



Fabrication of the denture with conventional method.



Secure spaces for the female sockets.

Chairside



Connect the female sockets to the Mini Ball Abutments in the intraoral.



Apply the resin to the secured area.



Position the denture in the intraoral and wait for it to set completely.

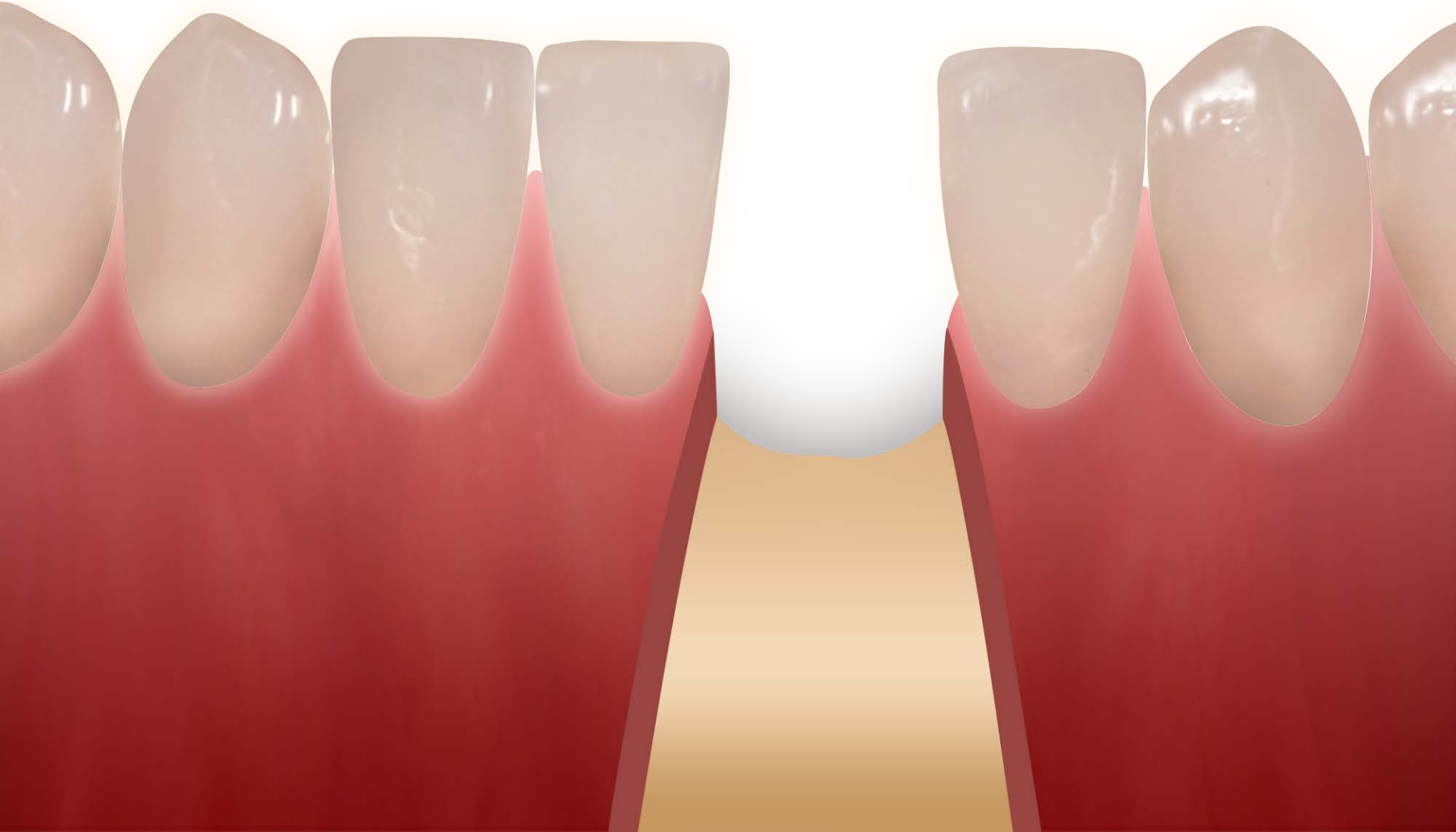


Female sockets are placed in the denture.



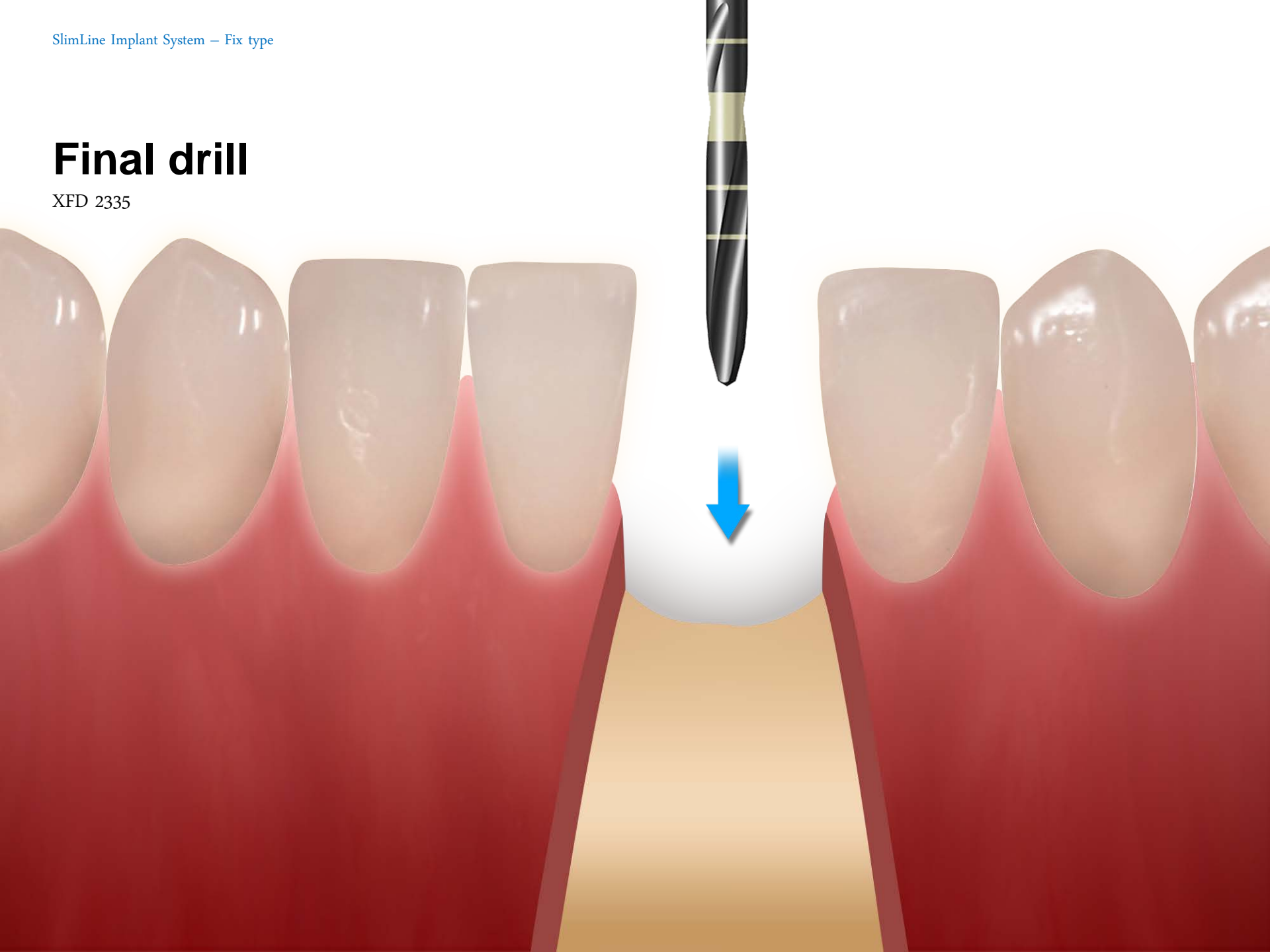
Polish the denture.

Incision



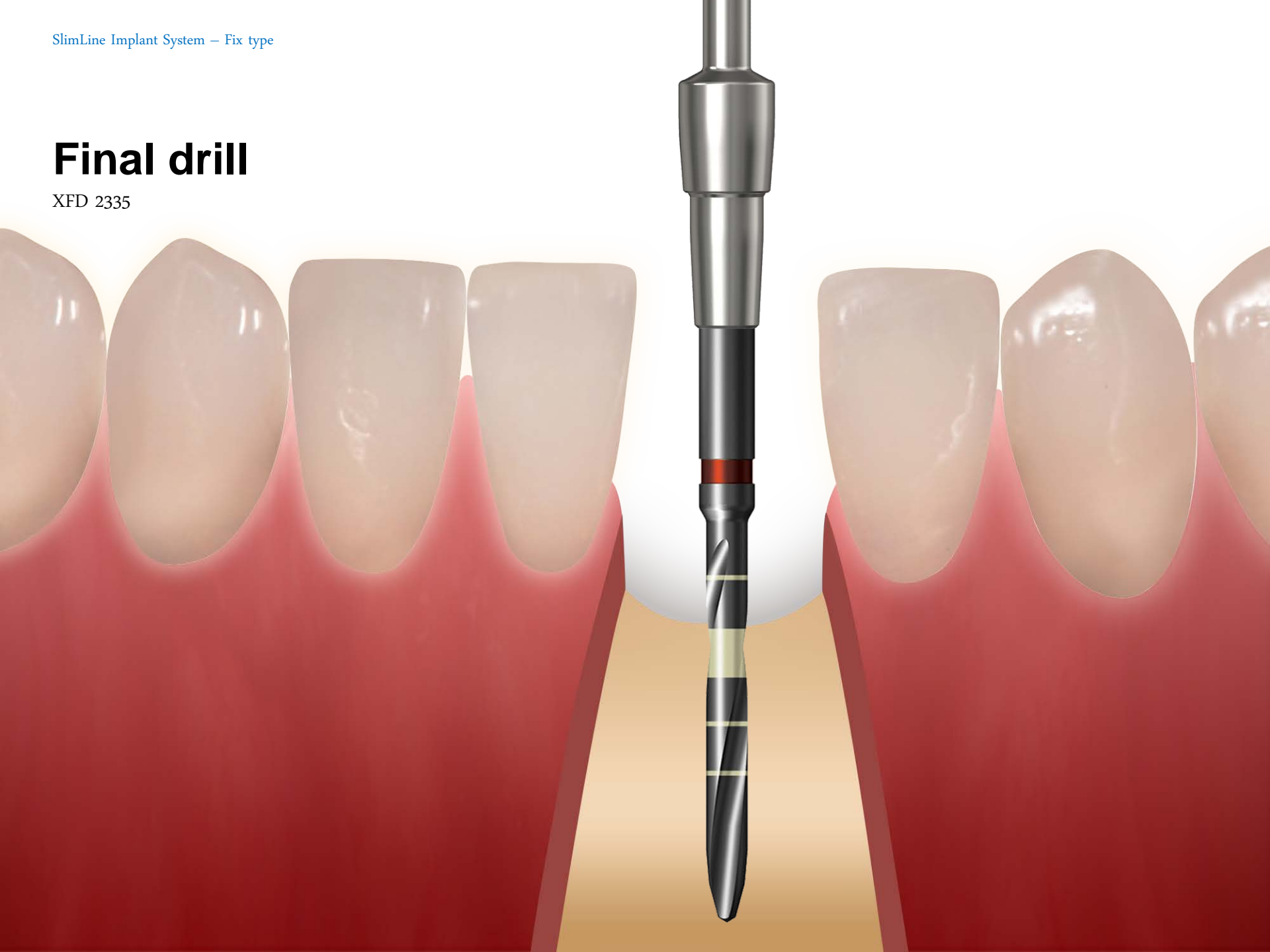
Final drill

XFD 2335



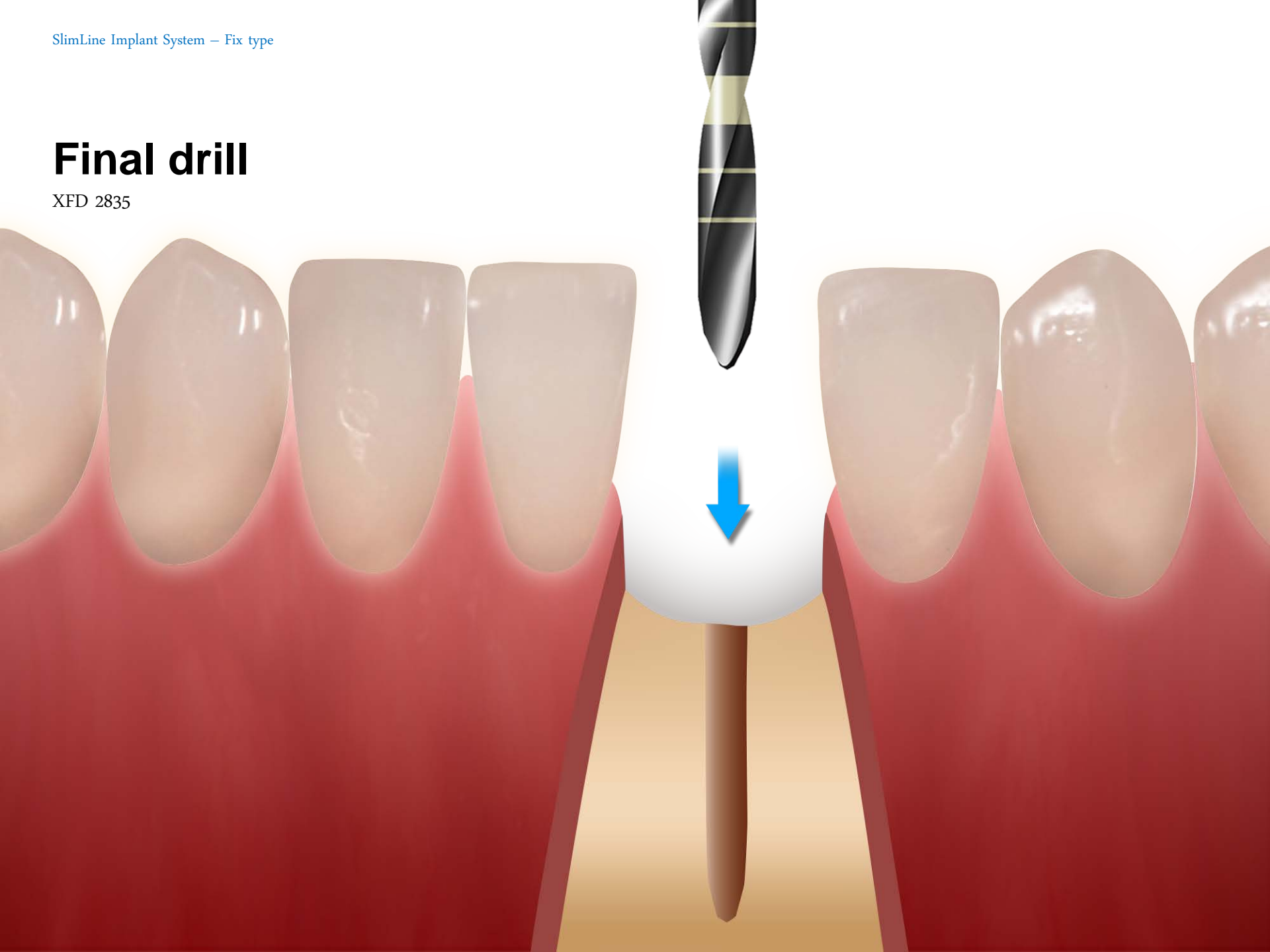
Final drill

XFD 2335



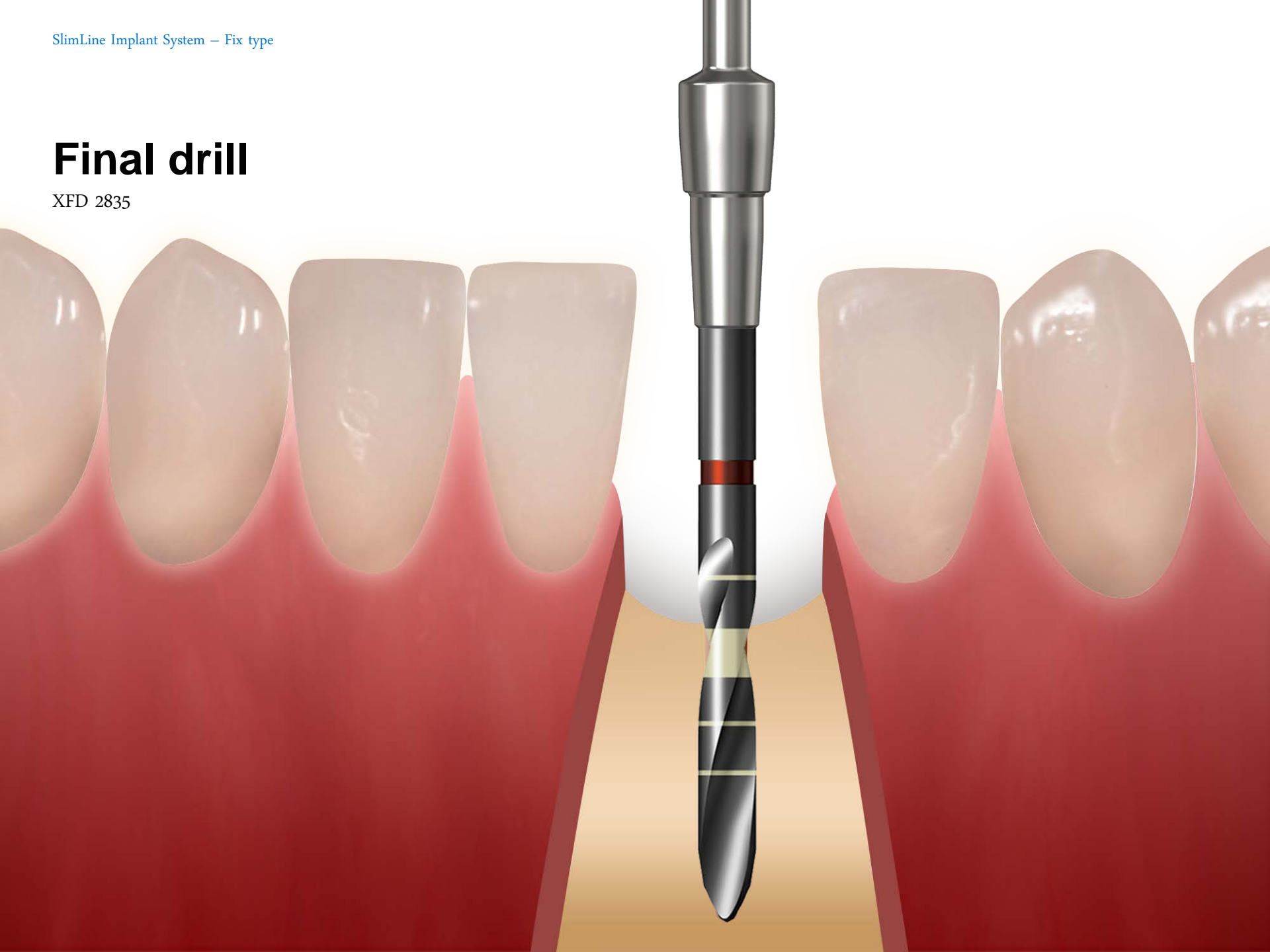
Final drill

XFD 2835



Final drill

XFD 2835



Final Drilling



XFD 2335



XFD 2835



XFD 3335

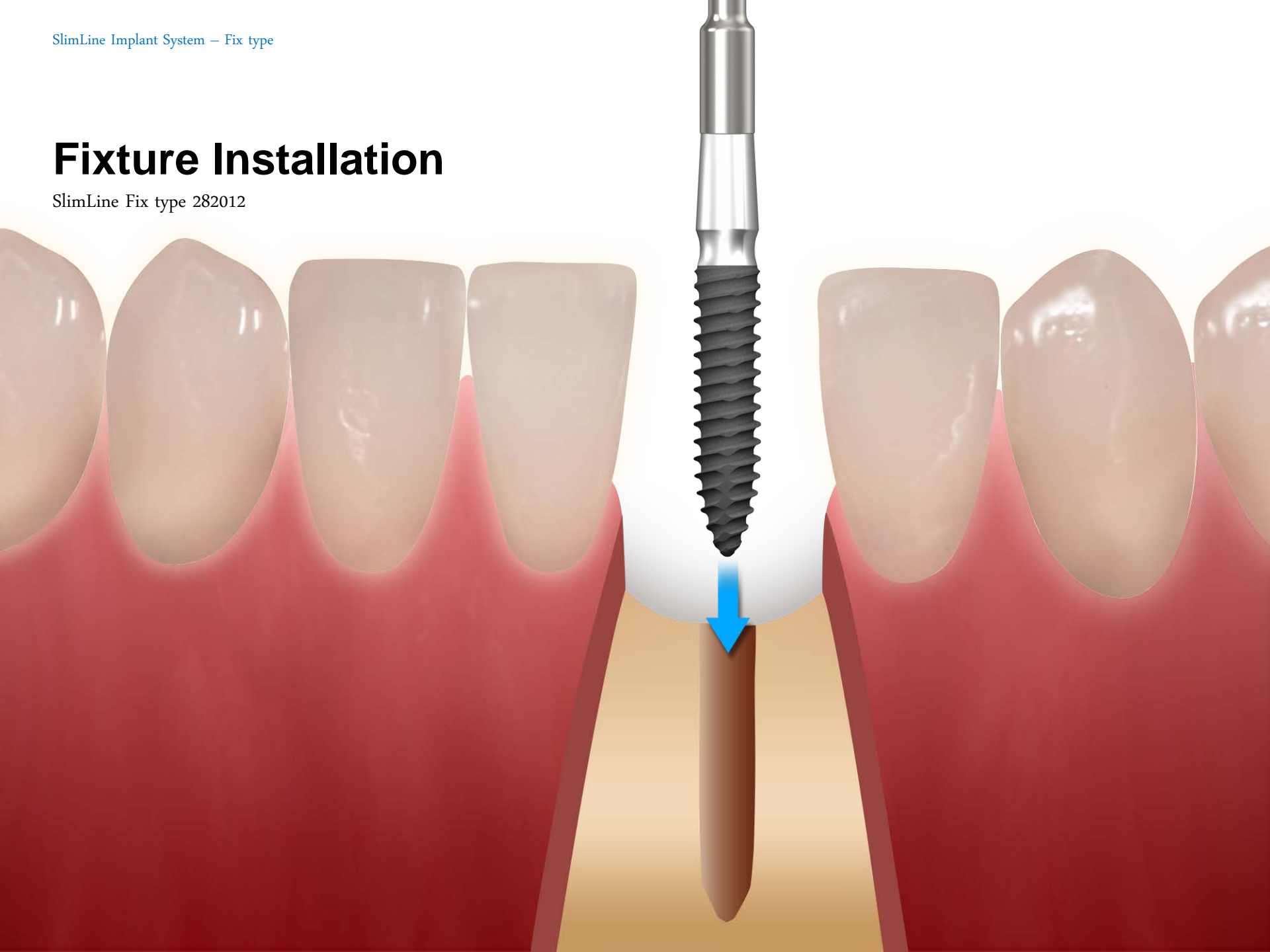


XFD 3835



Fixture Installation

SlimLine Fix type 282012



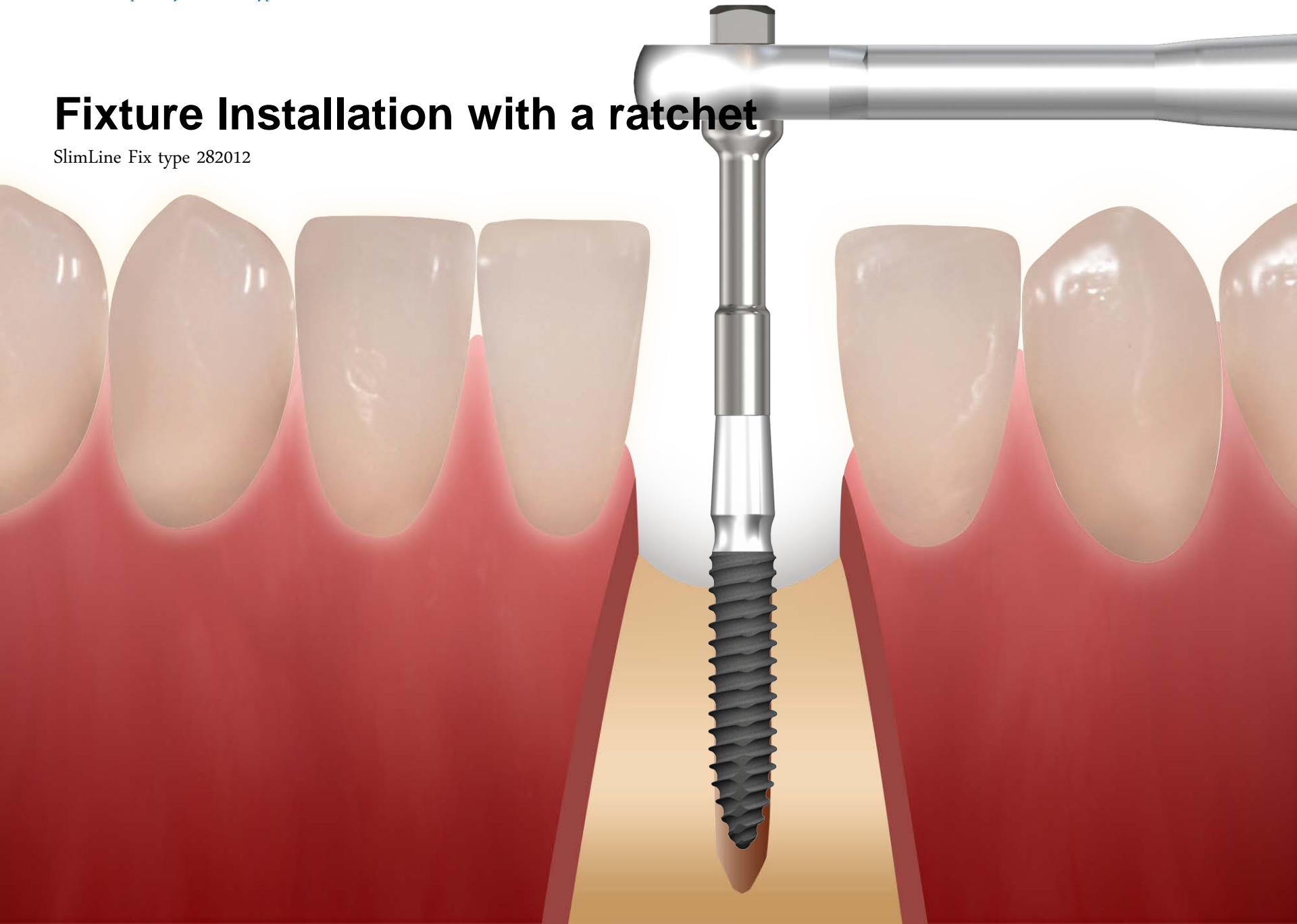
Fixture Installation

SlimLine Fix type 282012



Fixture Installation with a ratchet

SlimLine Fix type 282012



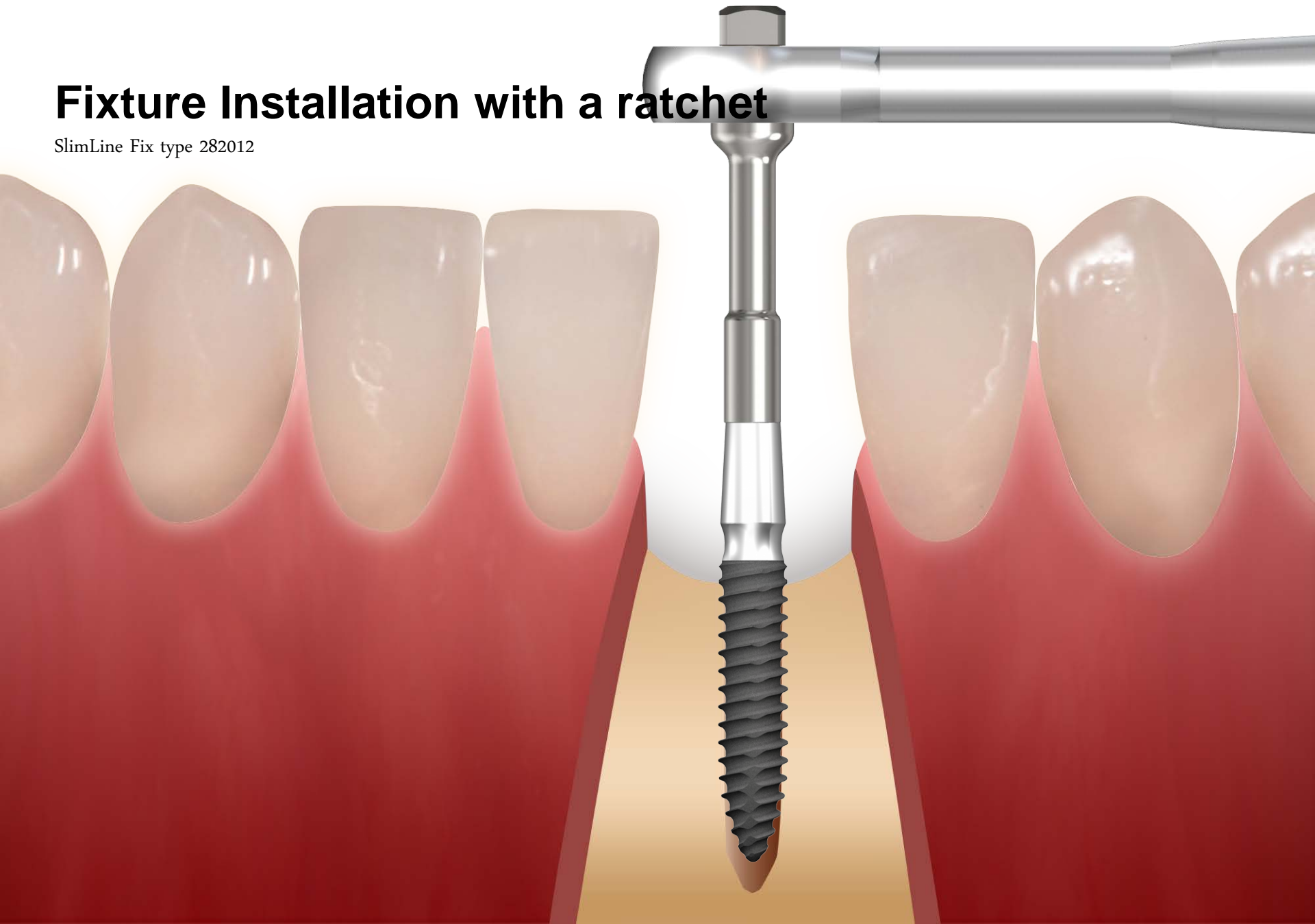
Fixture Installation with a ratchet

SlimLine Fix type 282012



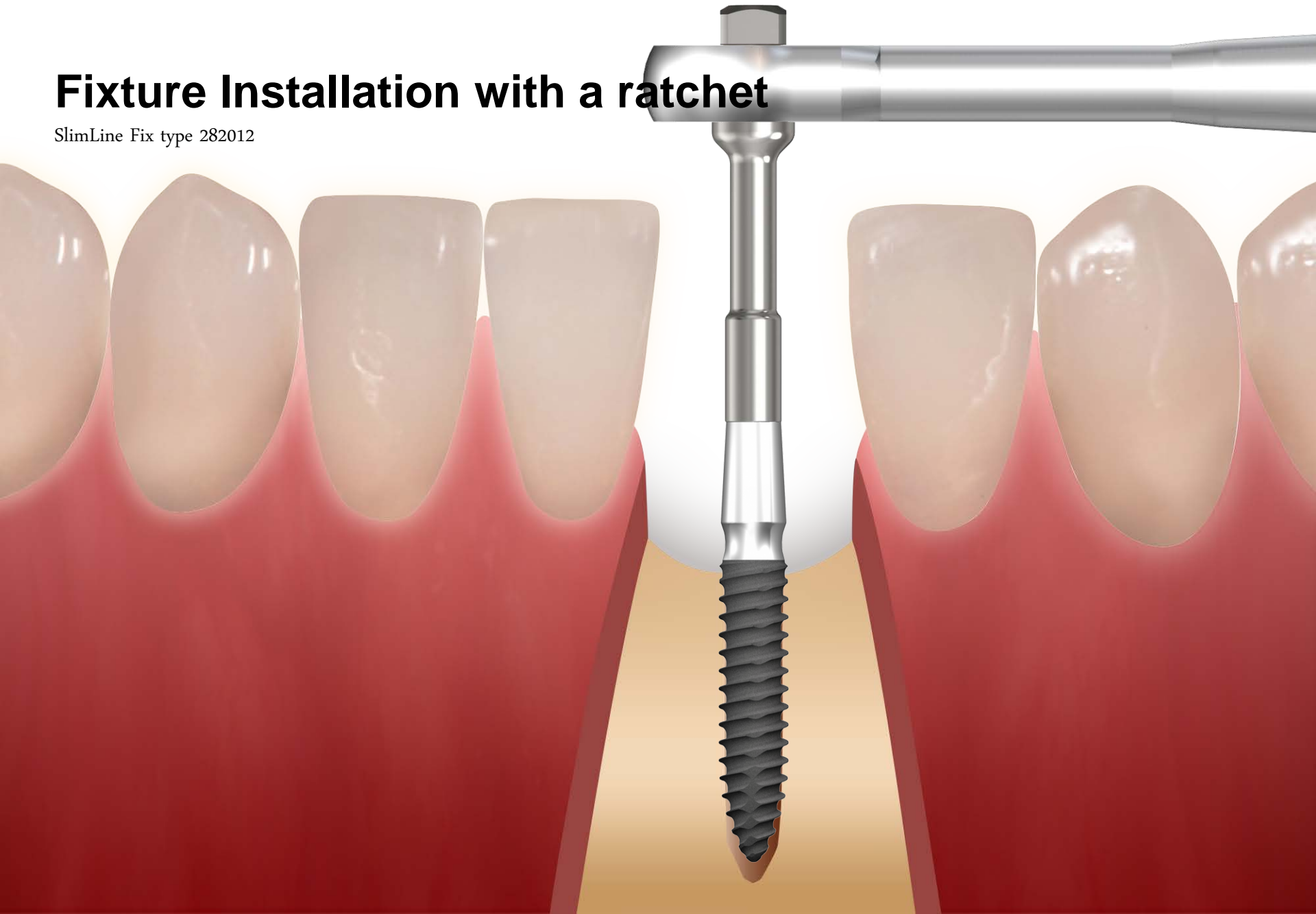
Fixture Installation with a ratchet

SlimLine Fix type 282012



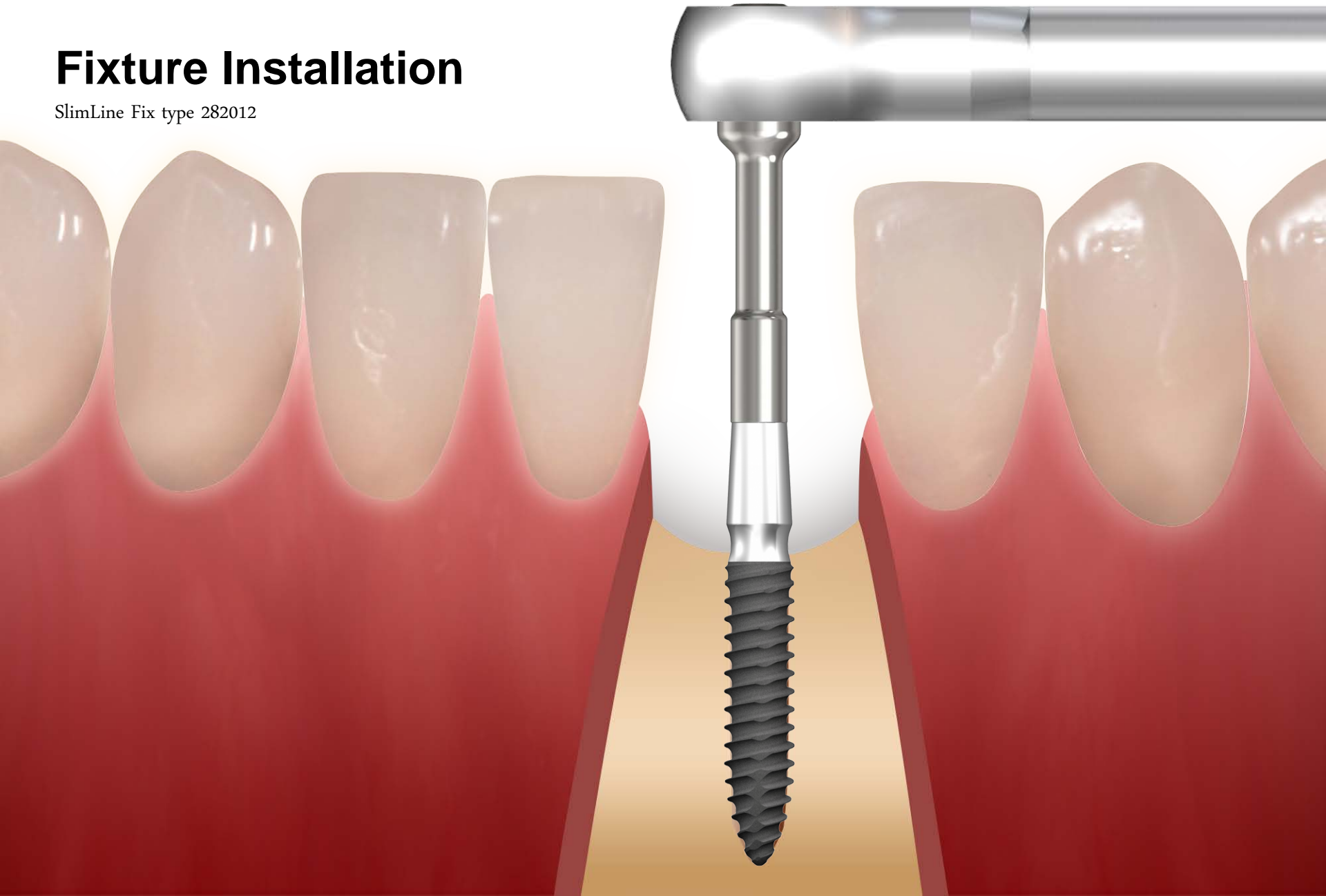
Fixture Installation with a ratchet

SlimLine Fix type 282012



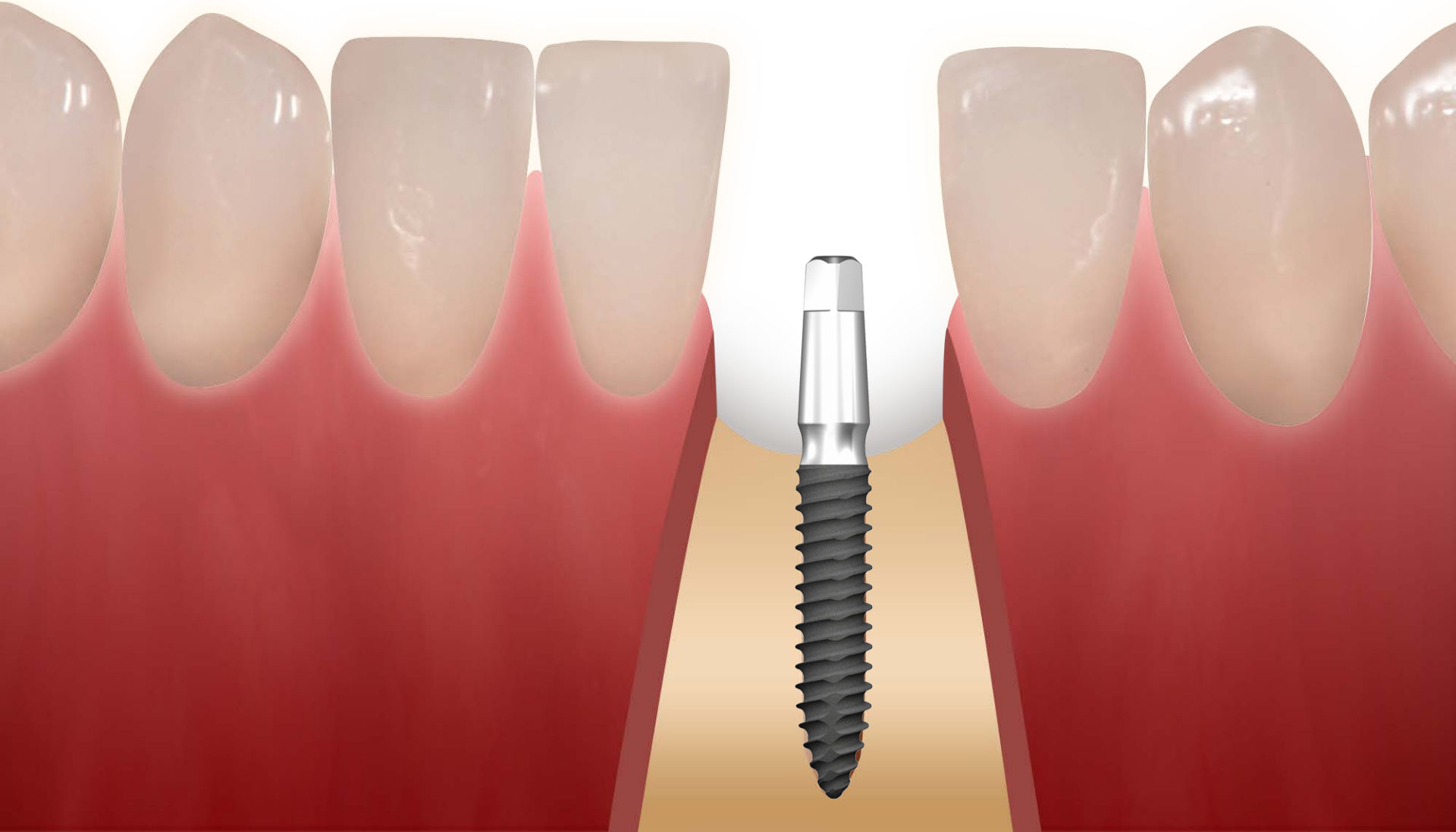
Fixture Installation

SlimLine Fix type 282012

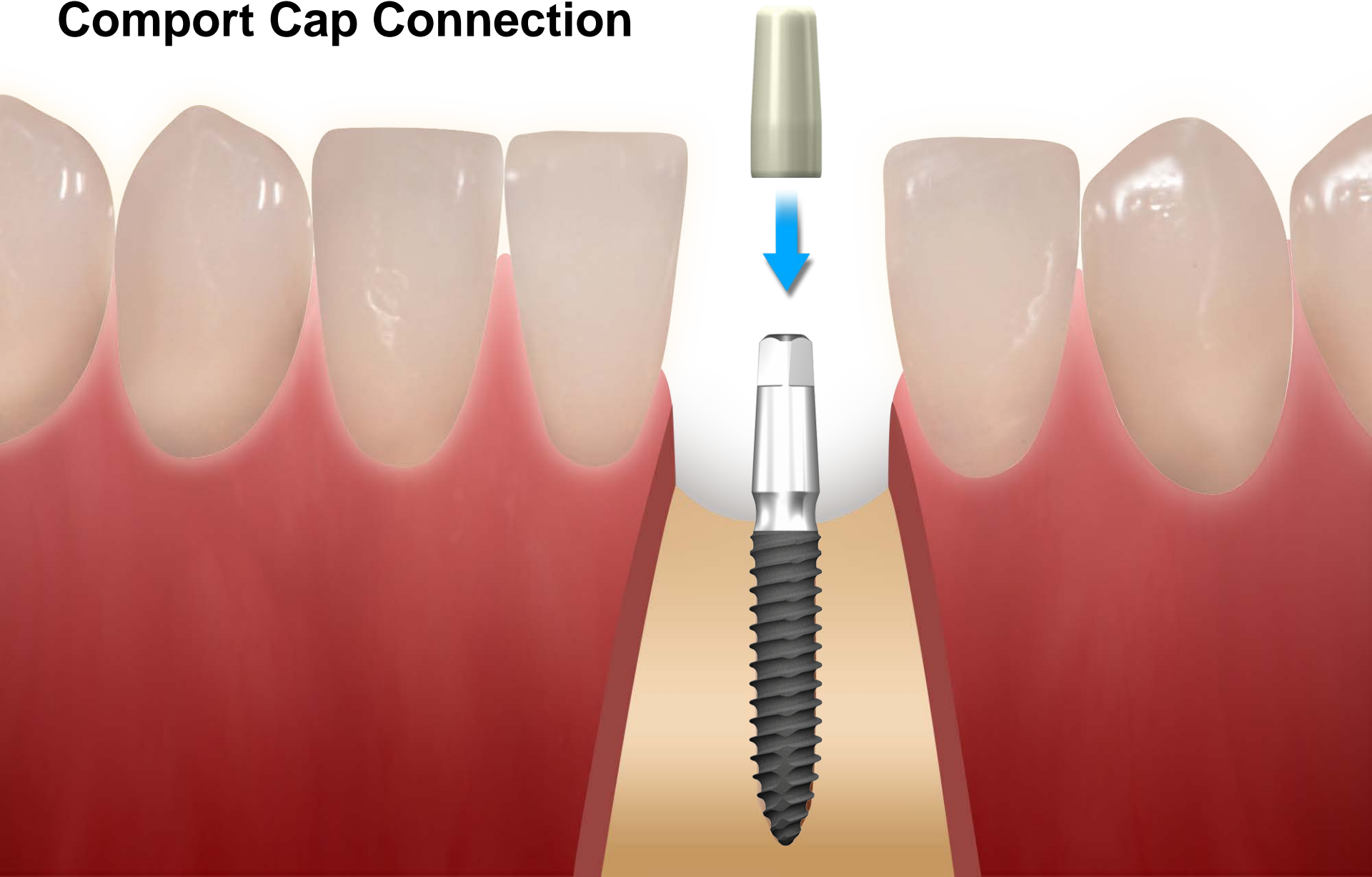


Fixture Installation

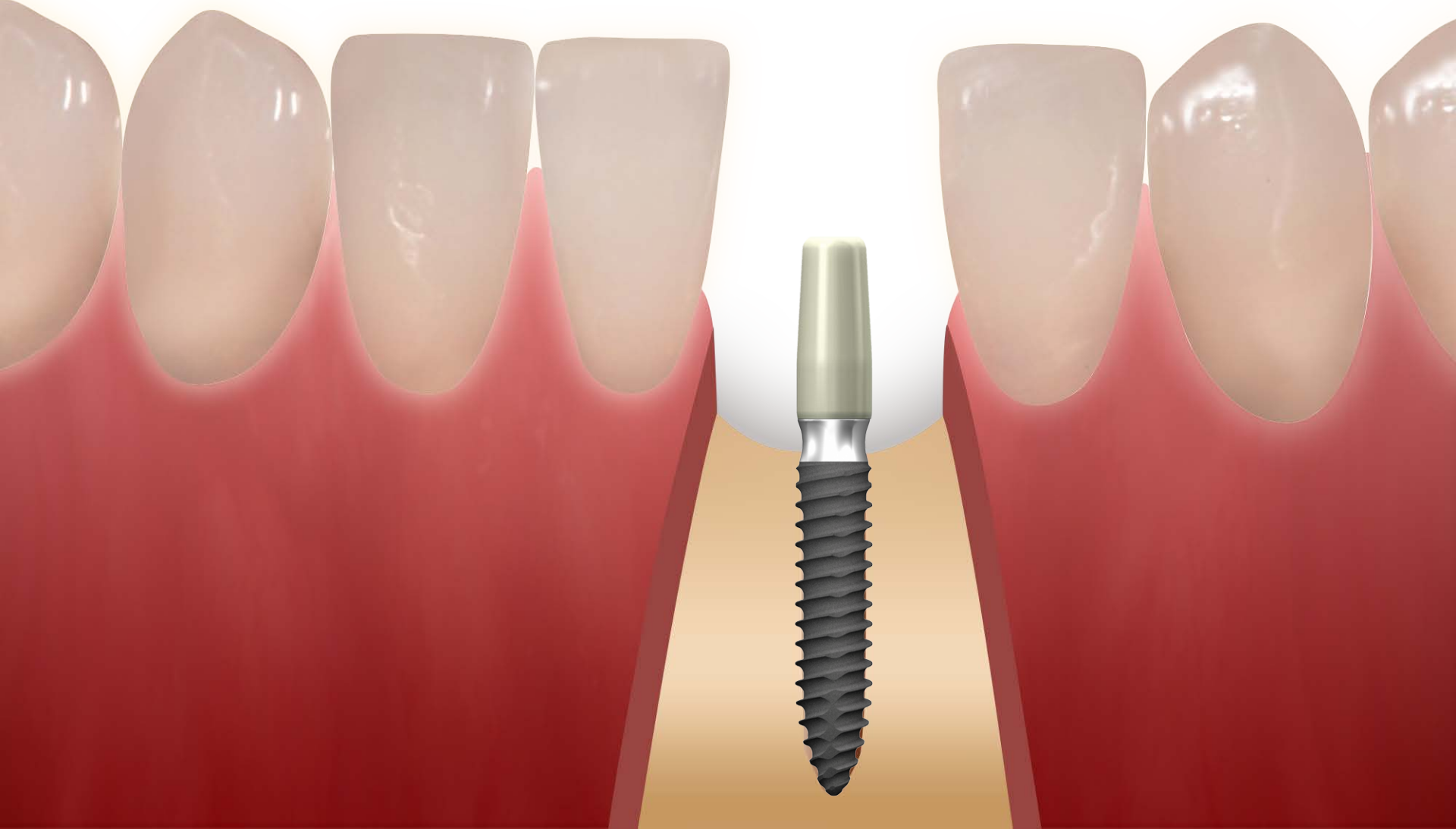
SlimLine Fix type 282012



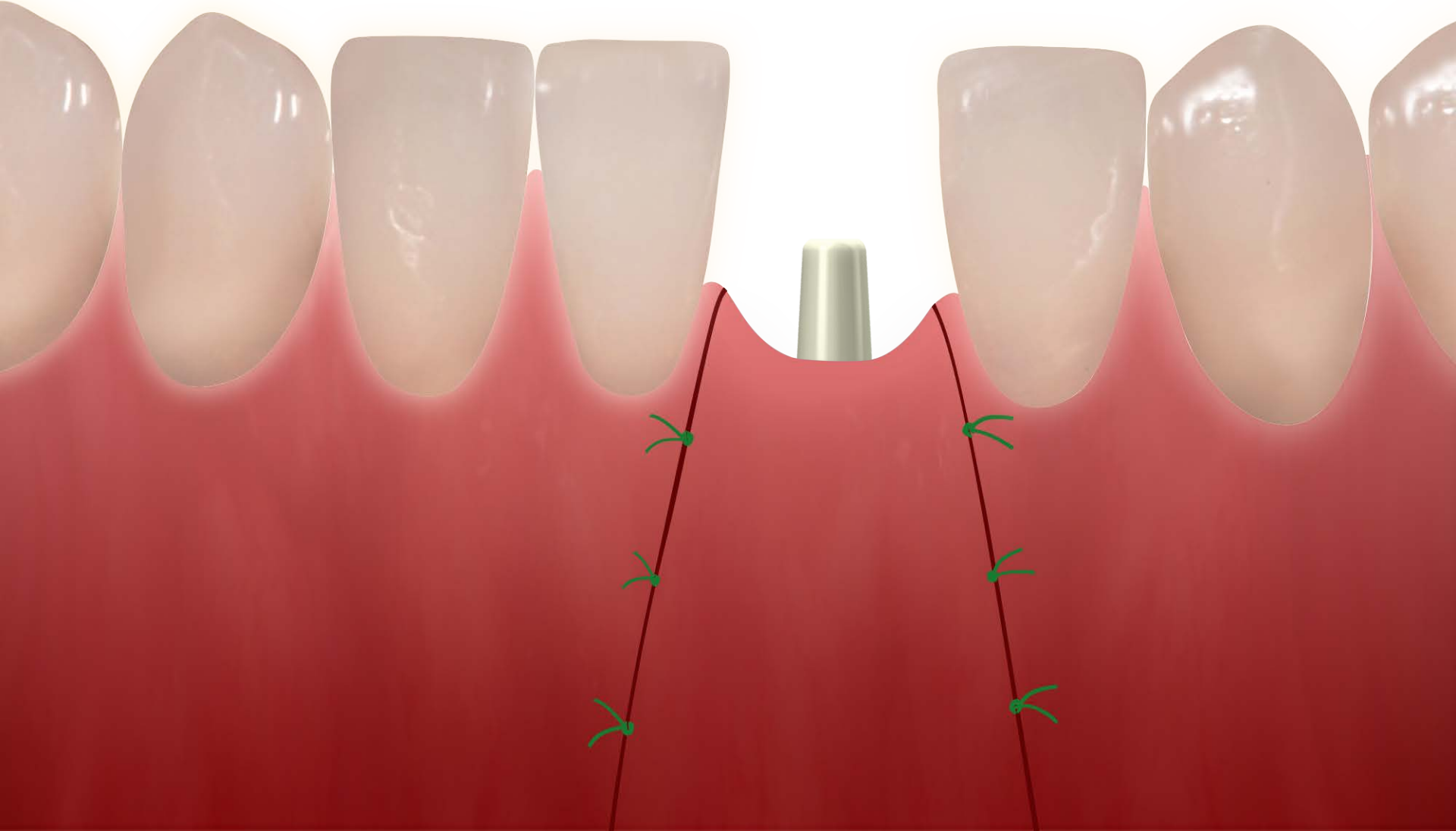
Comport Cap Connection



Comport Cap Connection



Suture



Healing



Provisional restoration



Provisional restoration

Emergency Profile formation



Final prosthesis

