

Dentium

Implantium II

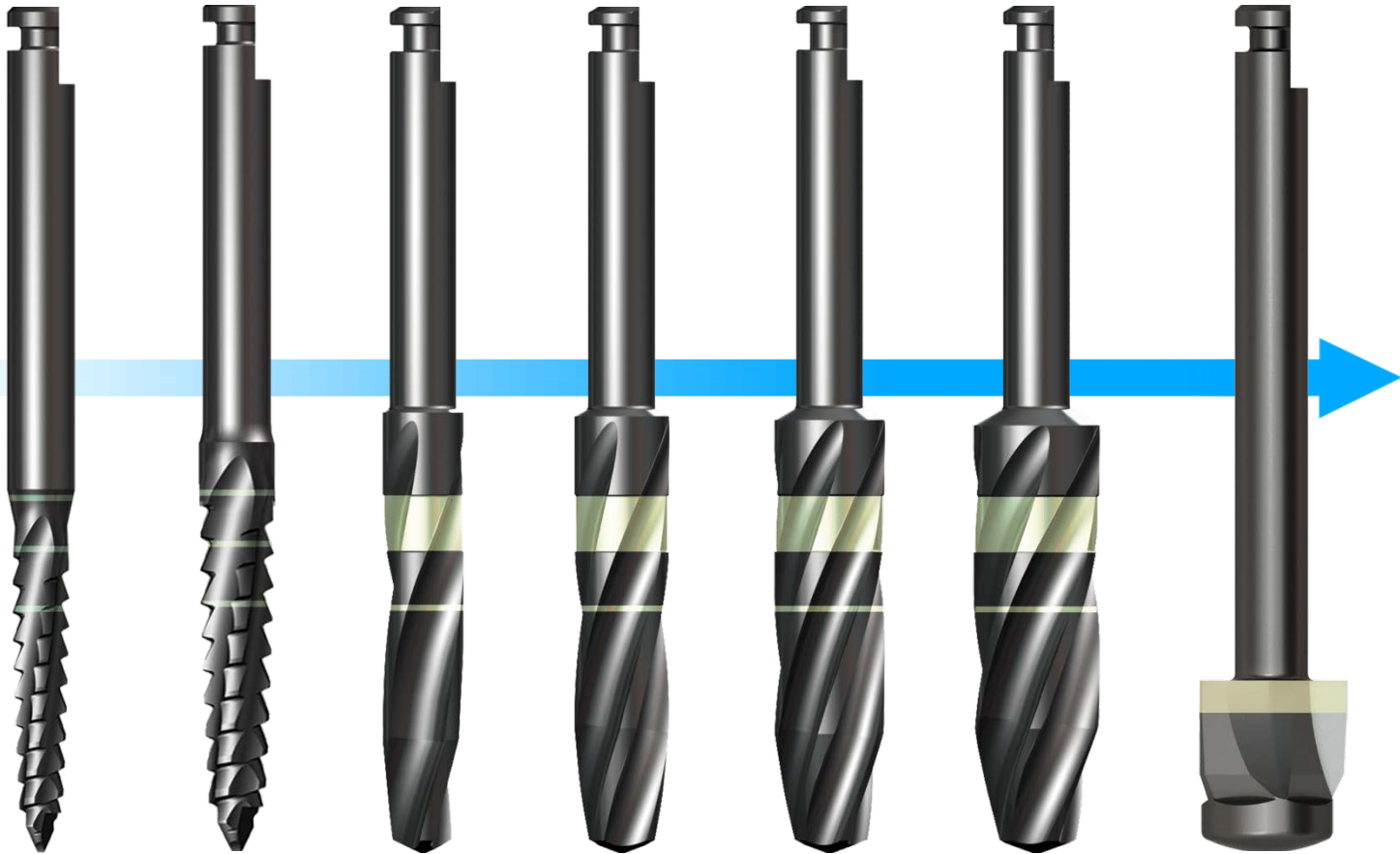
# I

## Implantation on Missing Tooth Space

### 1. Implantium II 5010 on Posterior



# Drilling Sequence



XLD 2229

XLD 2629

XFD 3429

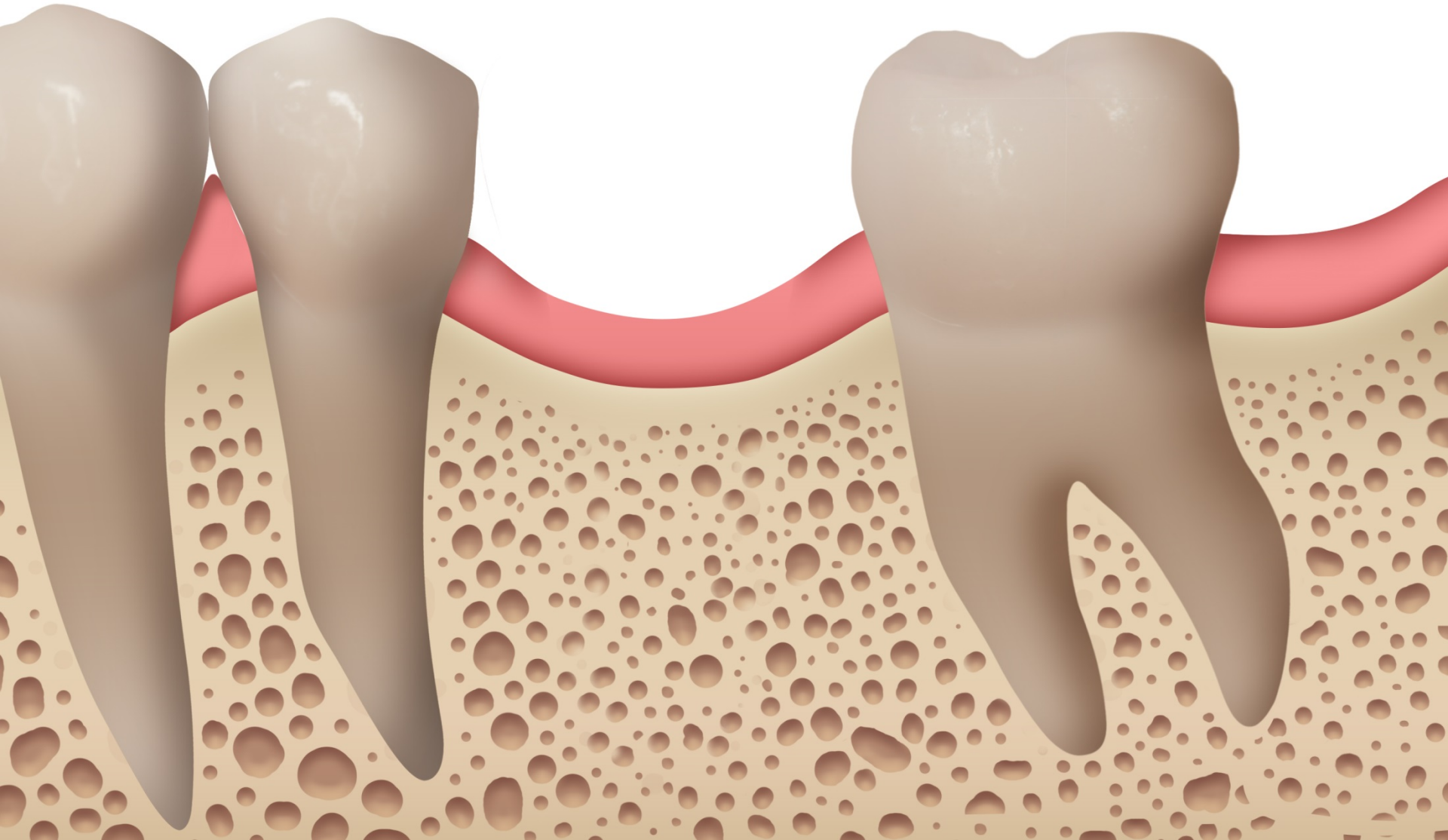
XFD 3829

XFD 4329

XFD 4829

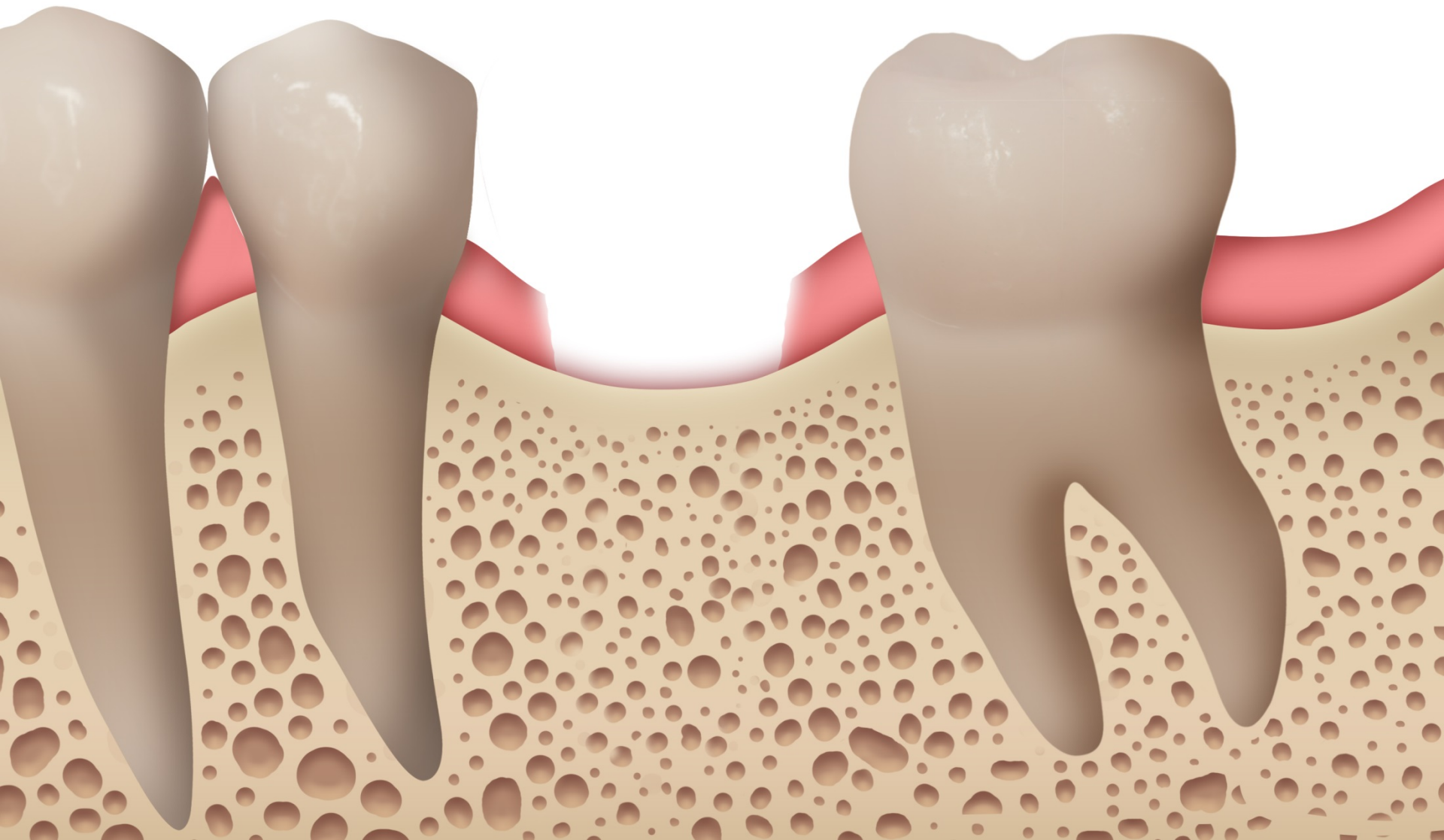
XCS 5029 SW

# Pre-op





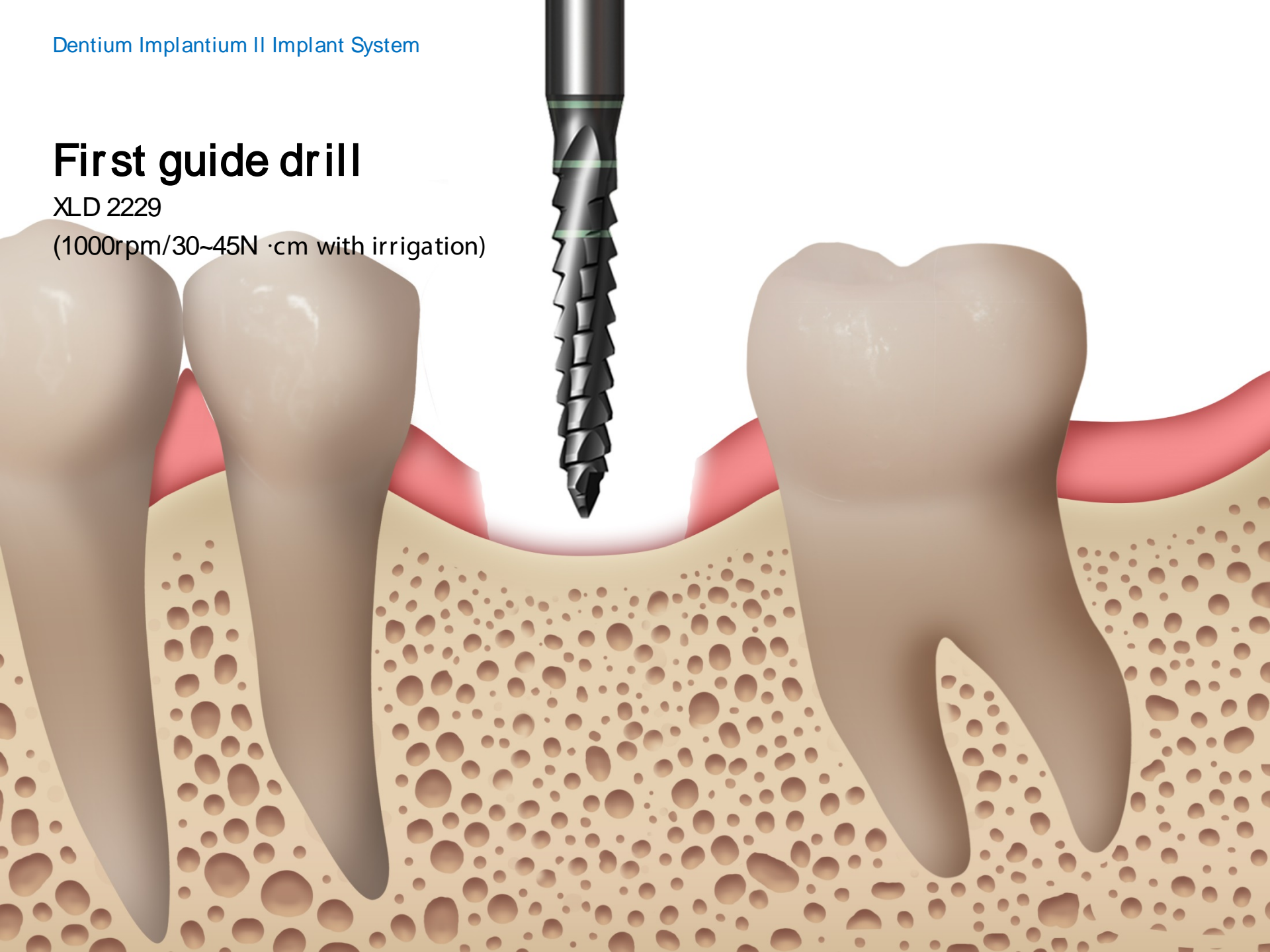
# Incision



## First guide drill

XLD 2229

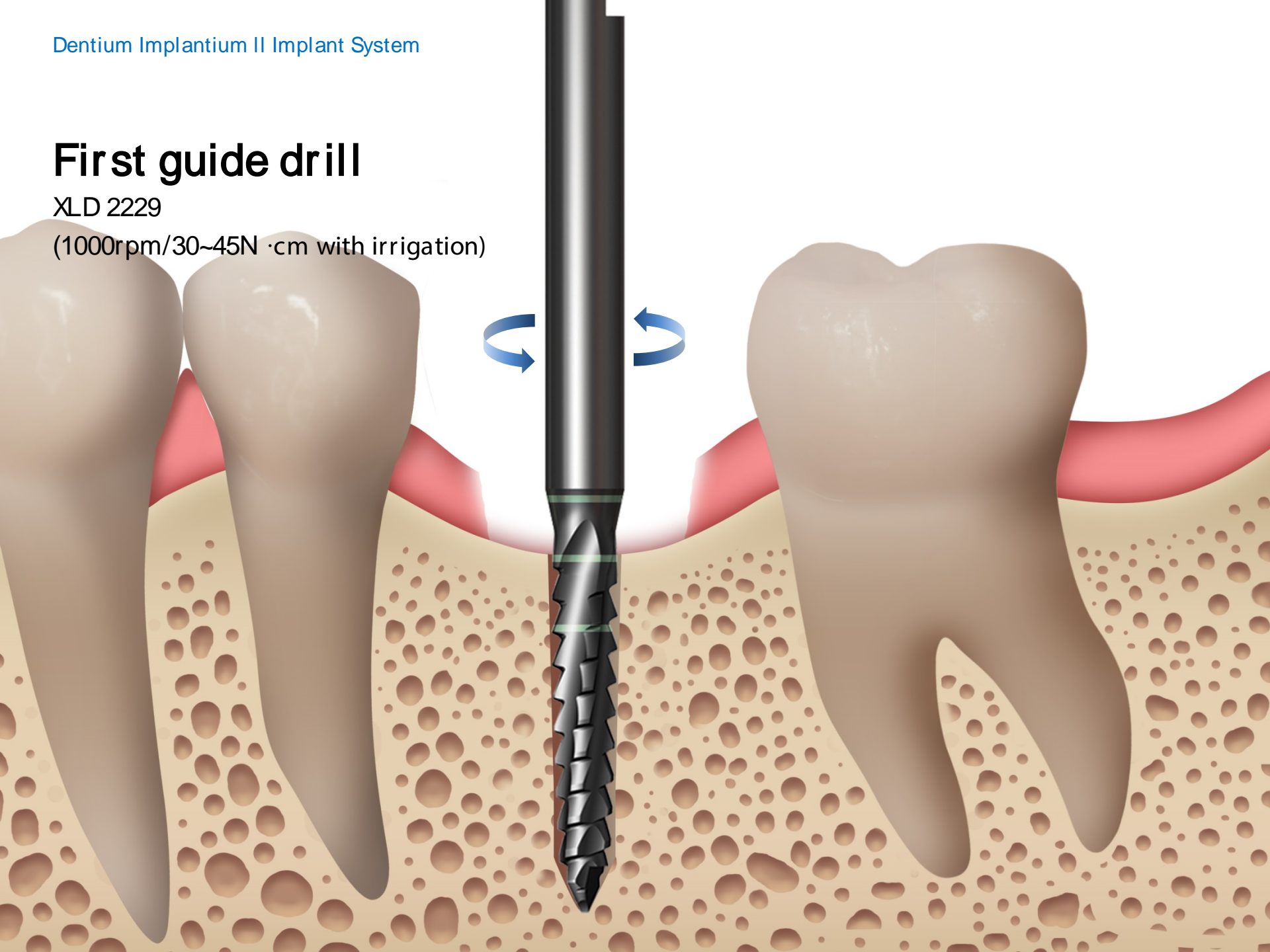
(1000rpm/30~45N ·cm with irrigation)



## First guide drill

XLD 2229

(1000rpm/30~45N ·cm with irrigation)

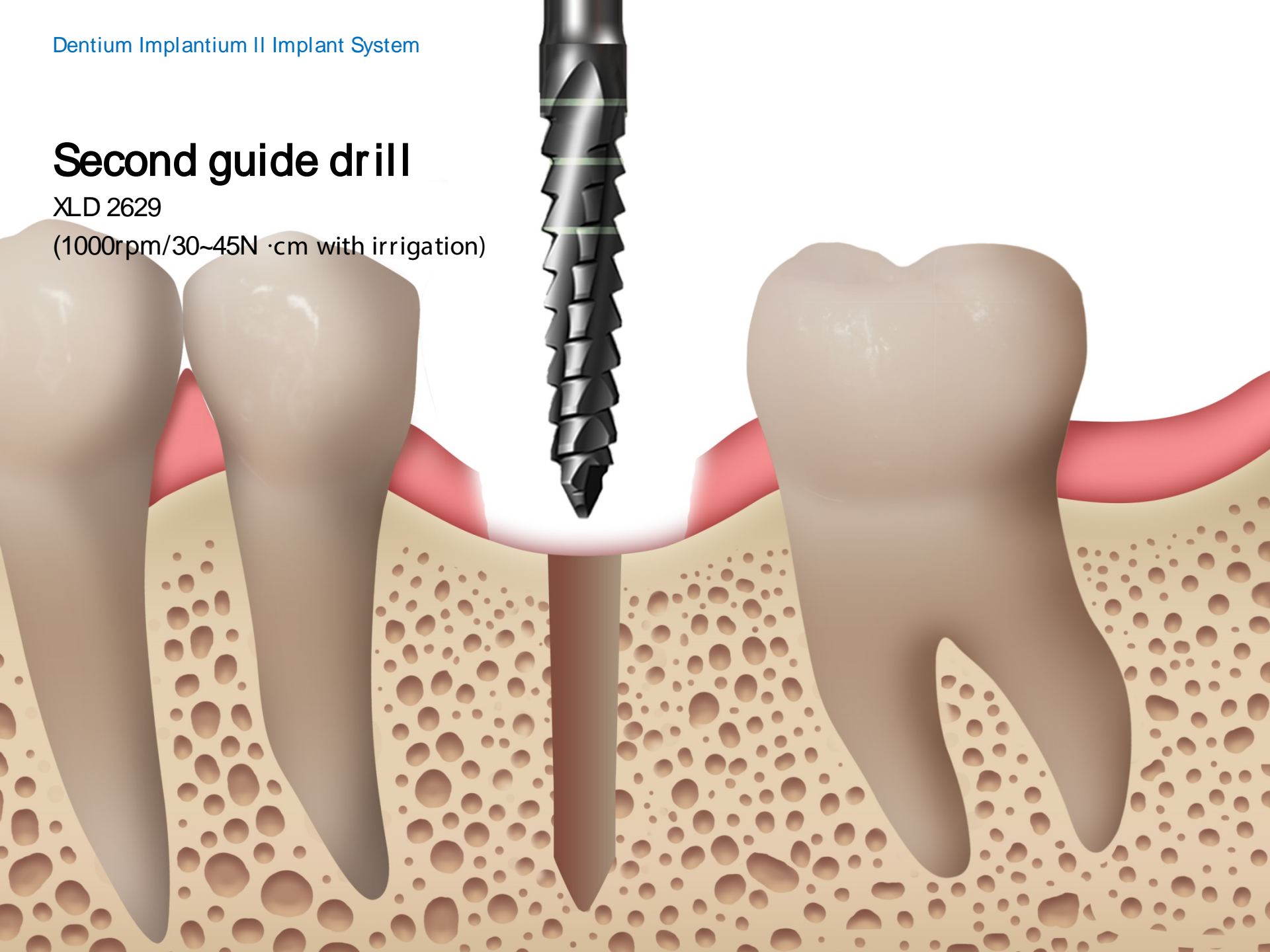




## Second guide drill

XLD 2629

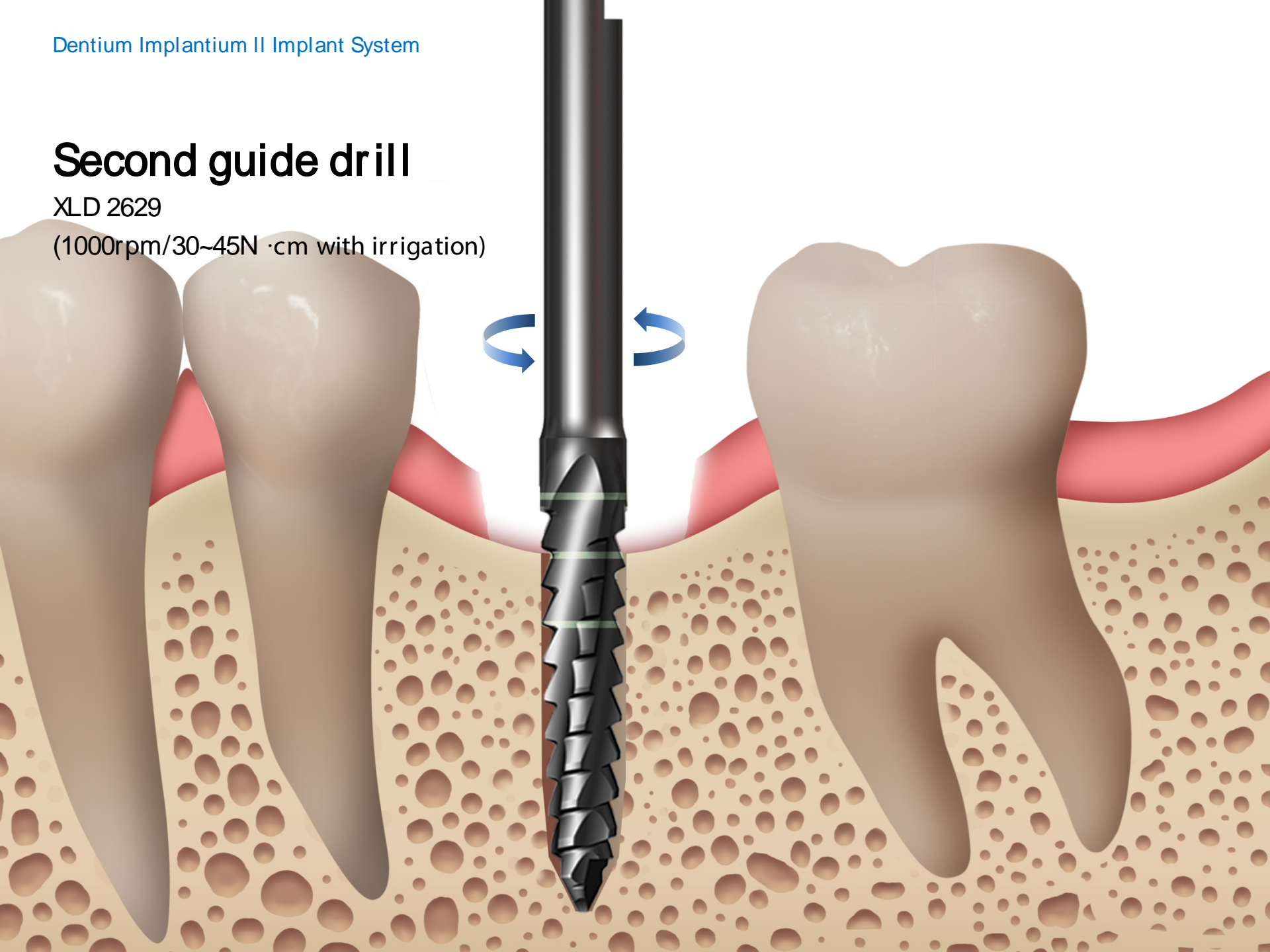
(1000rpm/30~45N ·cm with irrigation)



## Second guide drill

XLD 2629

(1000rpm/30~45N ·cm with irrigation)



## Final drill

XFD 3429

(1000rpm/30~45N ·cm with irrigation)

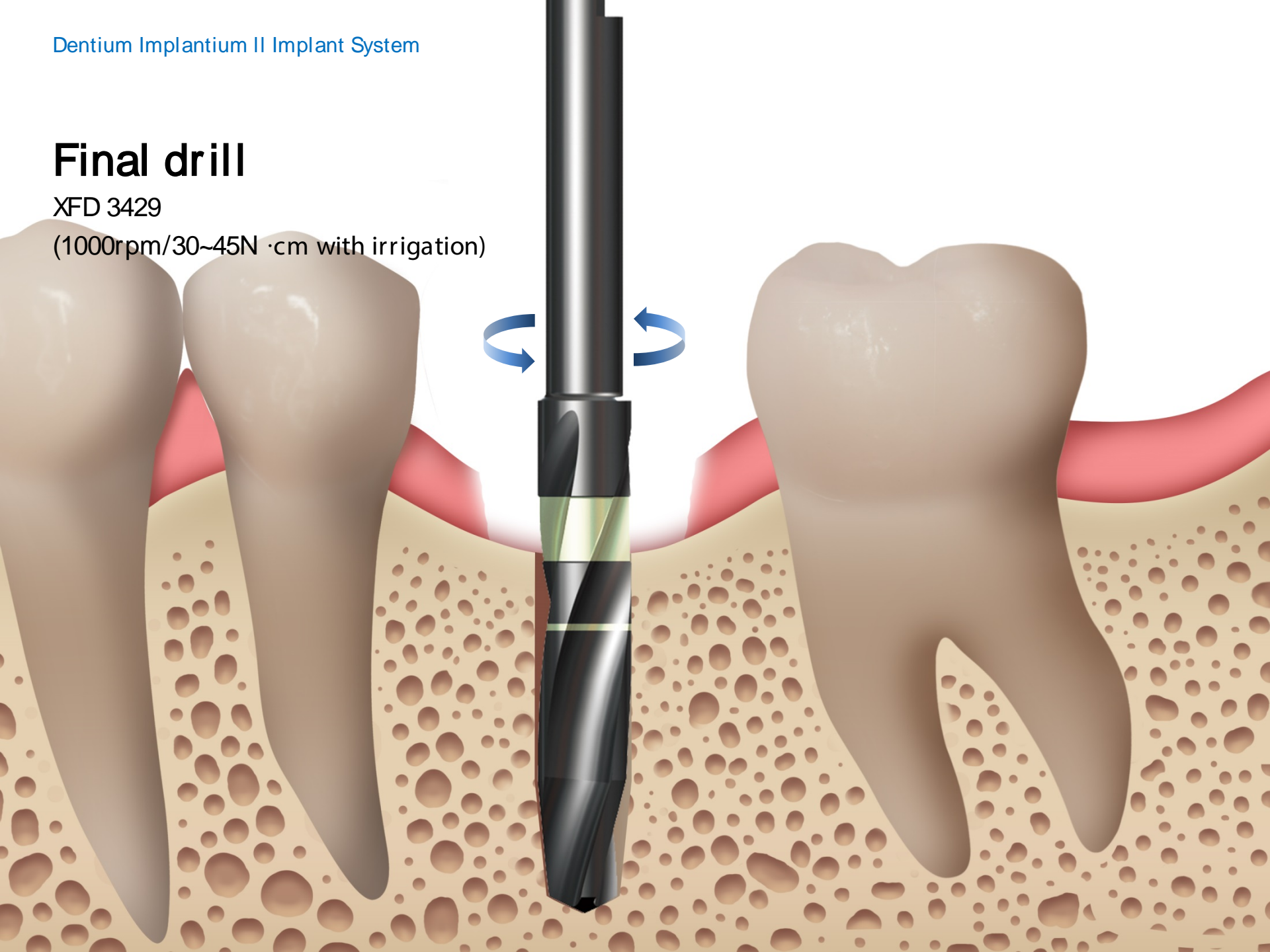




## Final drill

XFD 3429

(1000rpm/30~45N ·cm with irrigation)



## Final drill

XFD 3829

(1000rpm/30~45N ·cm with irrigation)

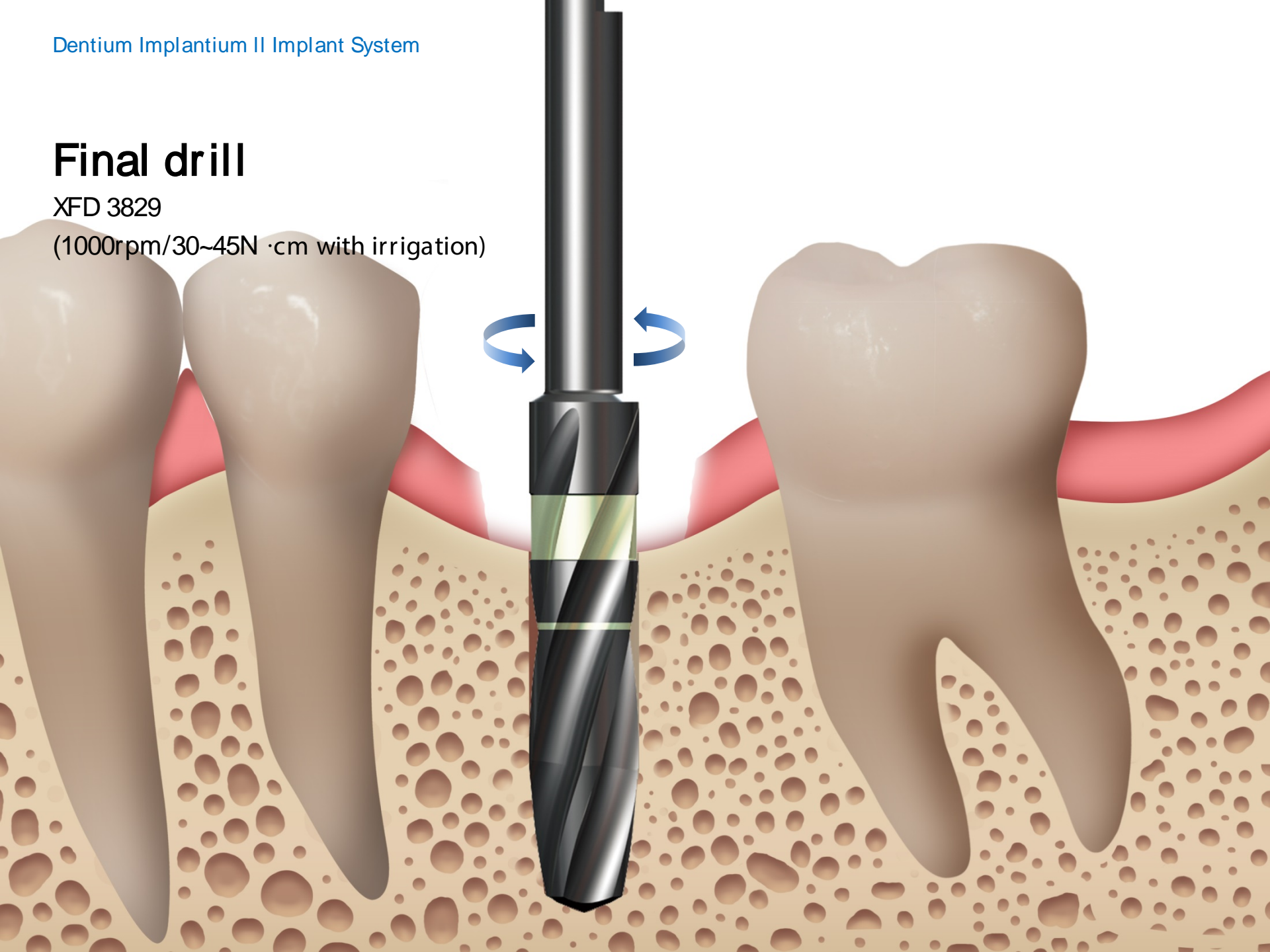




## Final drill

XFD 3829

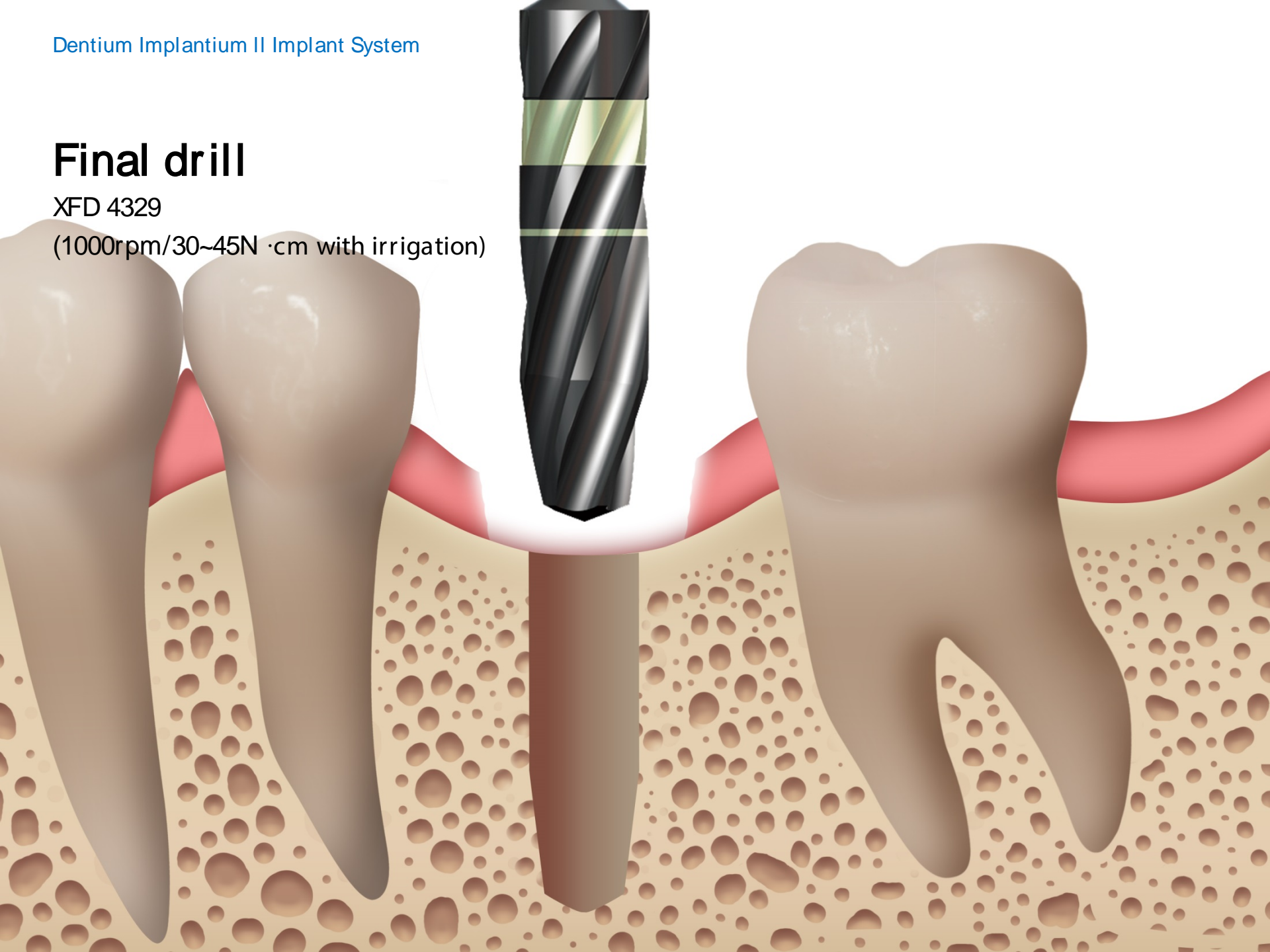
(1000rpm/30~45N ·cm with irrigation)



## Final drill

XFD 4329

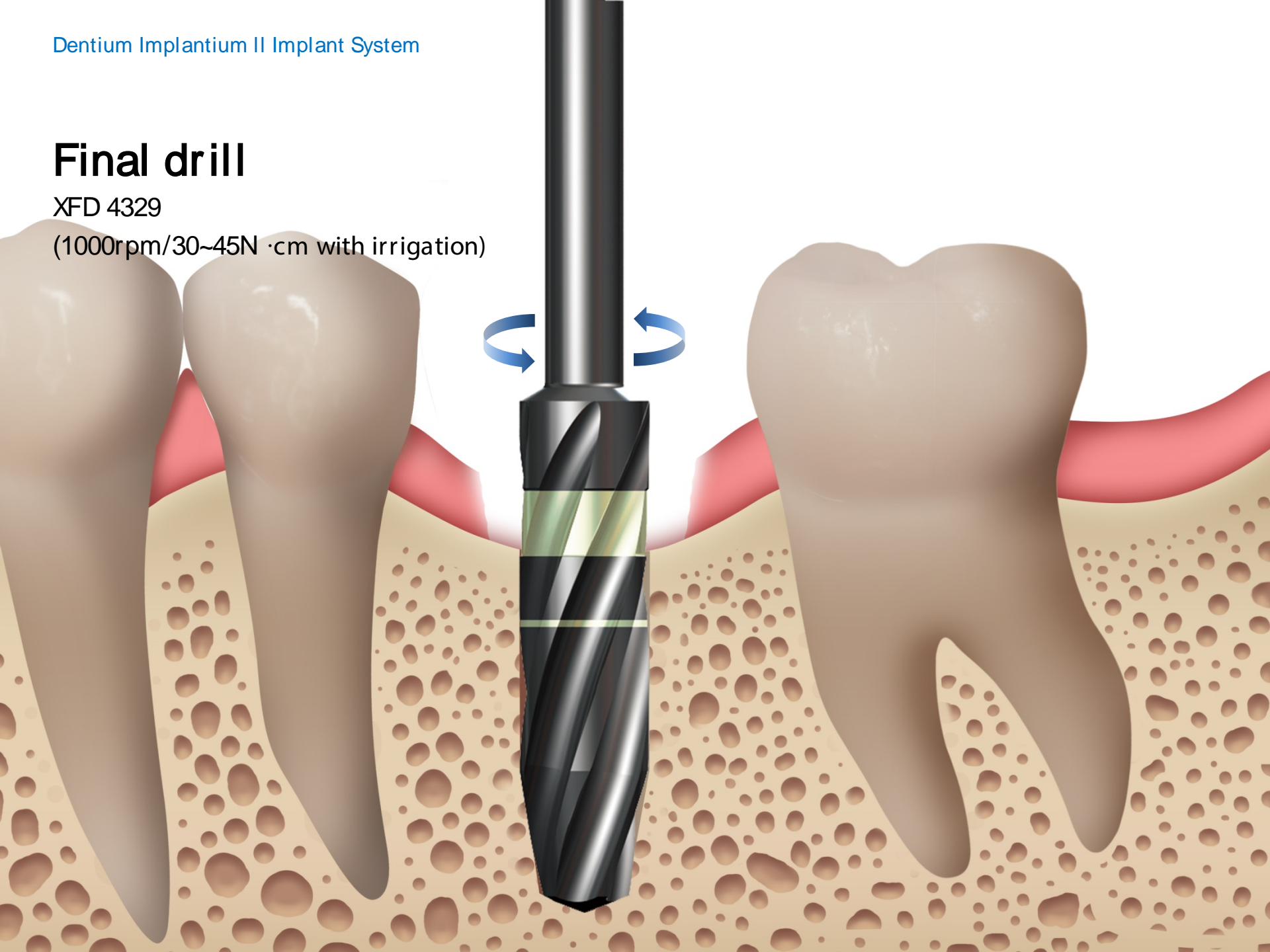
(1000rpm/30~45N ·cm with irrigation)



## Final drill

XFD 4329

(1000rpm/30~45N ·cm with irrigation)

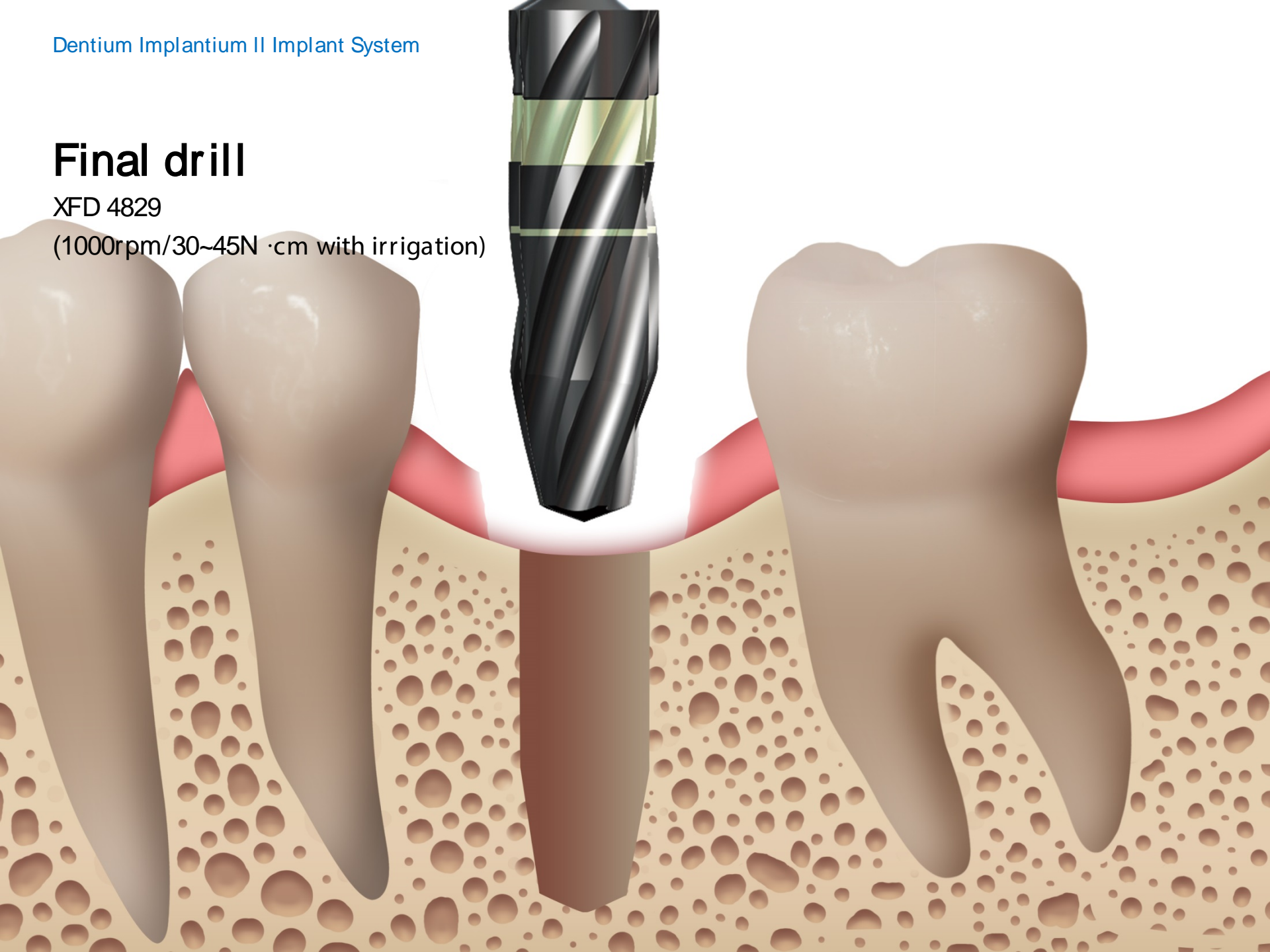




## Final drill

XFD 4829

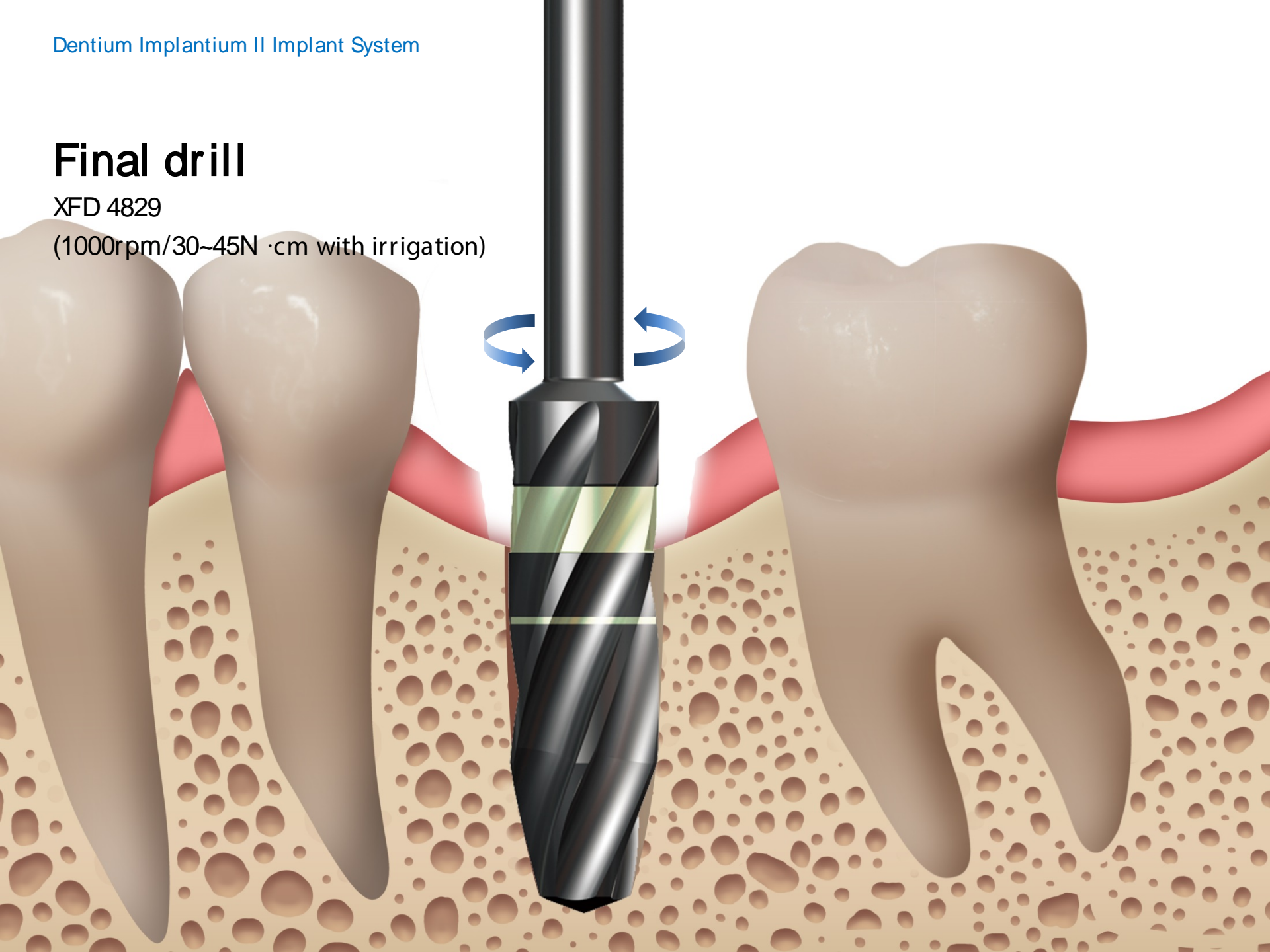
(1000rpm/30~45N · cm with irrigation)



## Final drill

XFD 4829

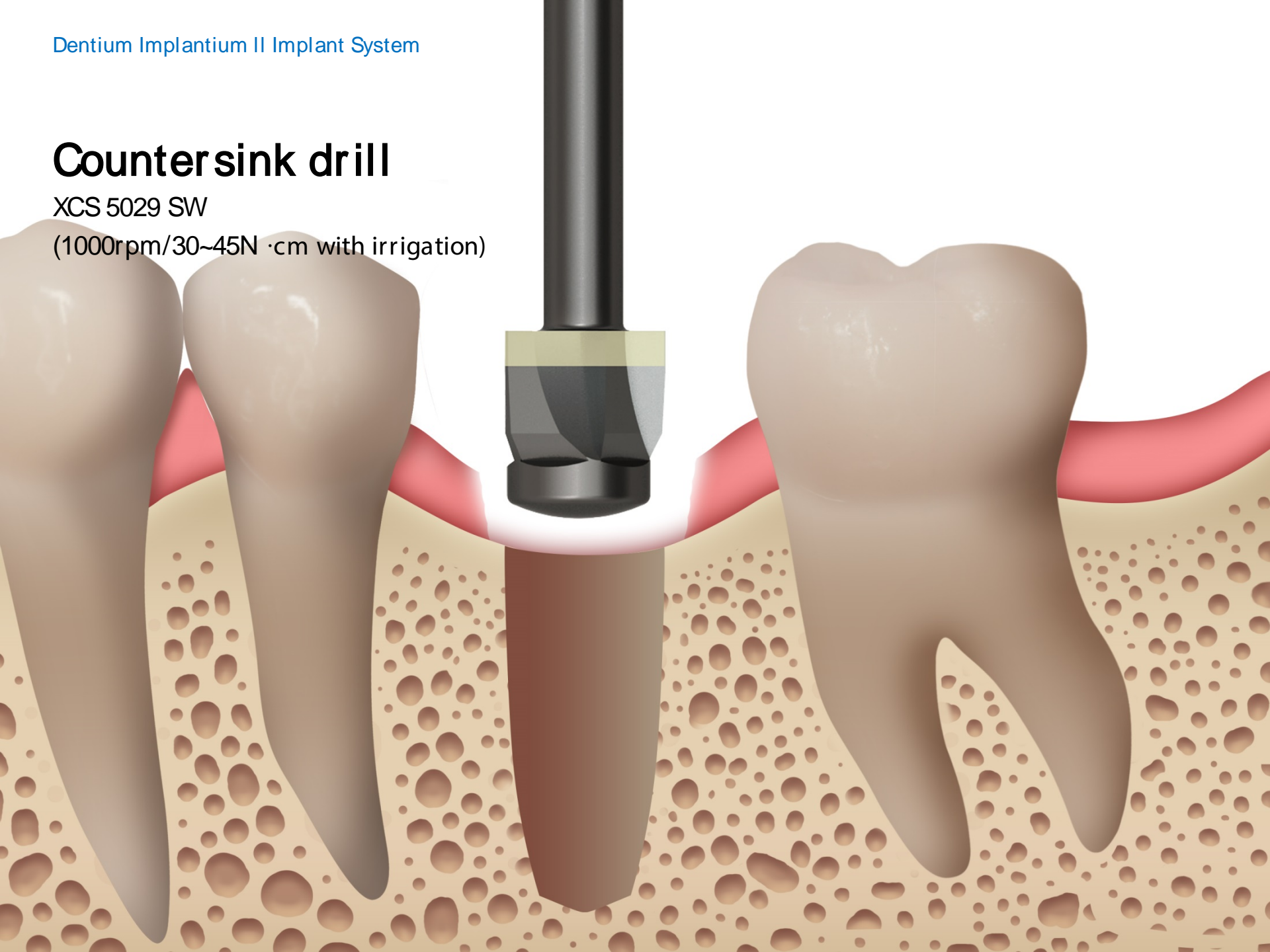
(1000rpm/30~45N ·cm with irrigation)



## Countersink drill

XCS 5029 SW

(1000rpm/30~45N ·cm with irrigation)

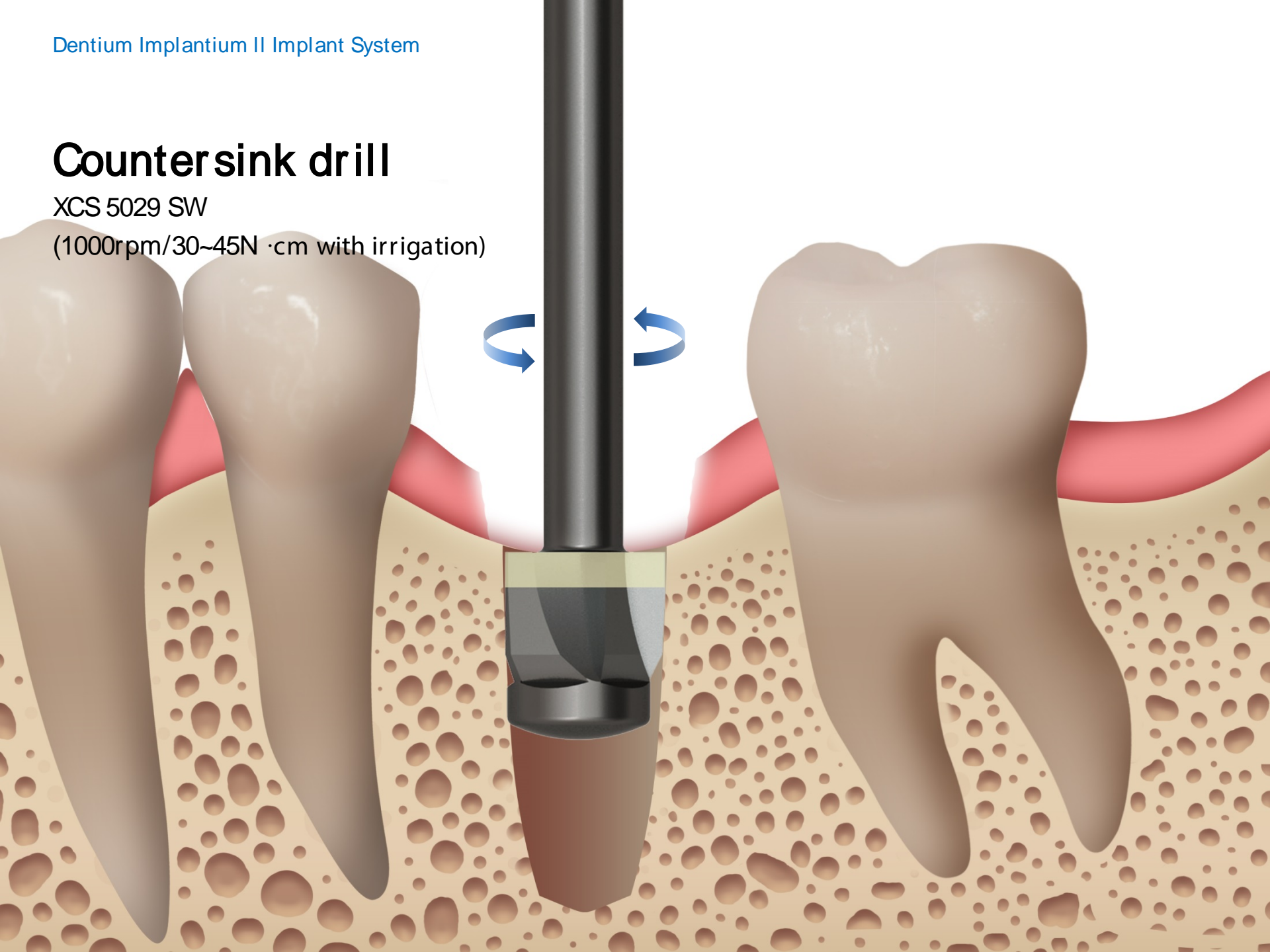




## Countersink drill

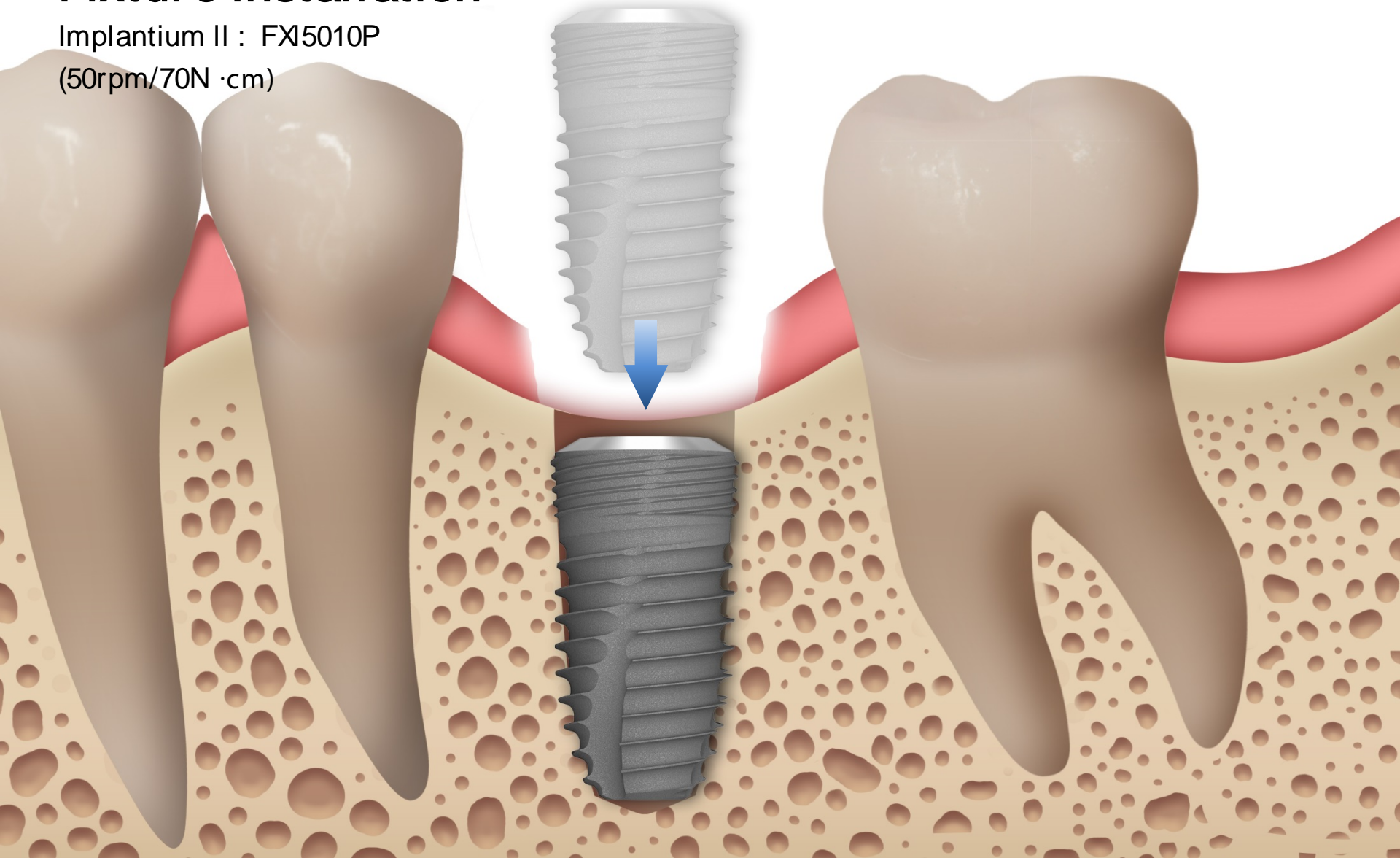
XCS 5029 SW

(1000rpm/30~45N ·cm with irrigation)



## Fixture Installation

Implantium II : FXI5010P  
(50rpm/70N·cm)

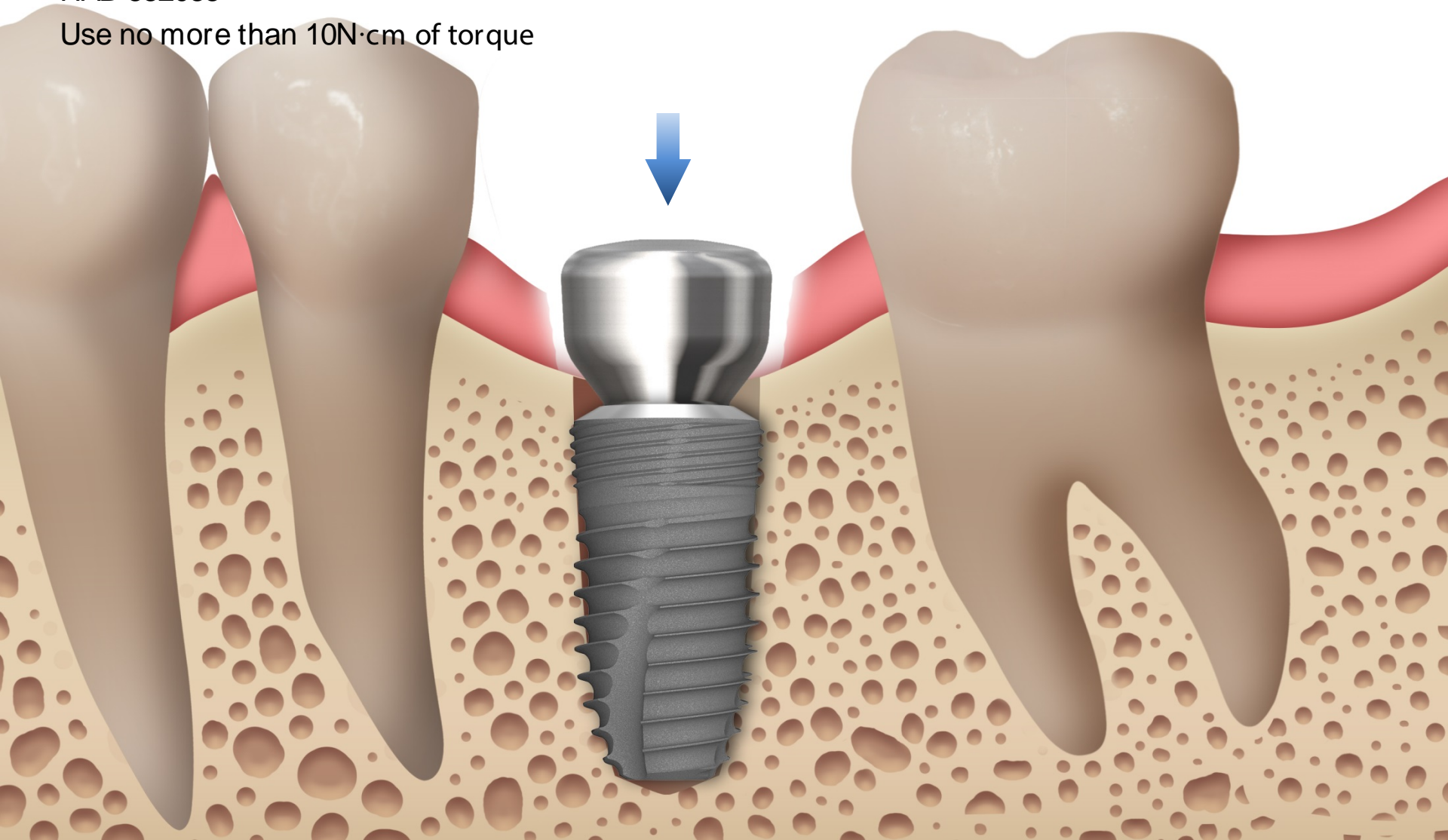




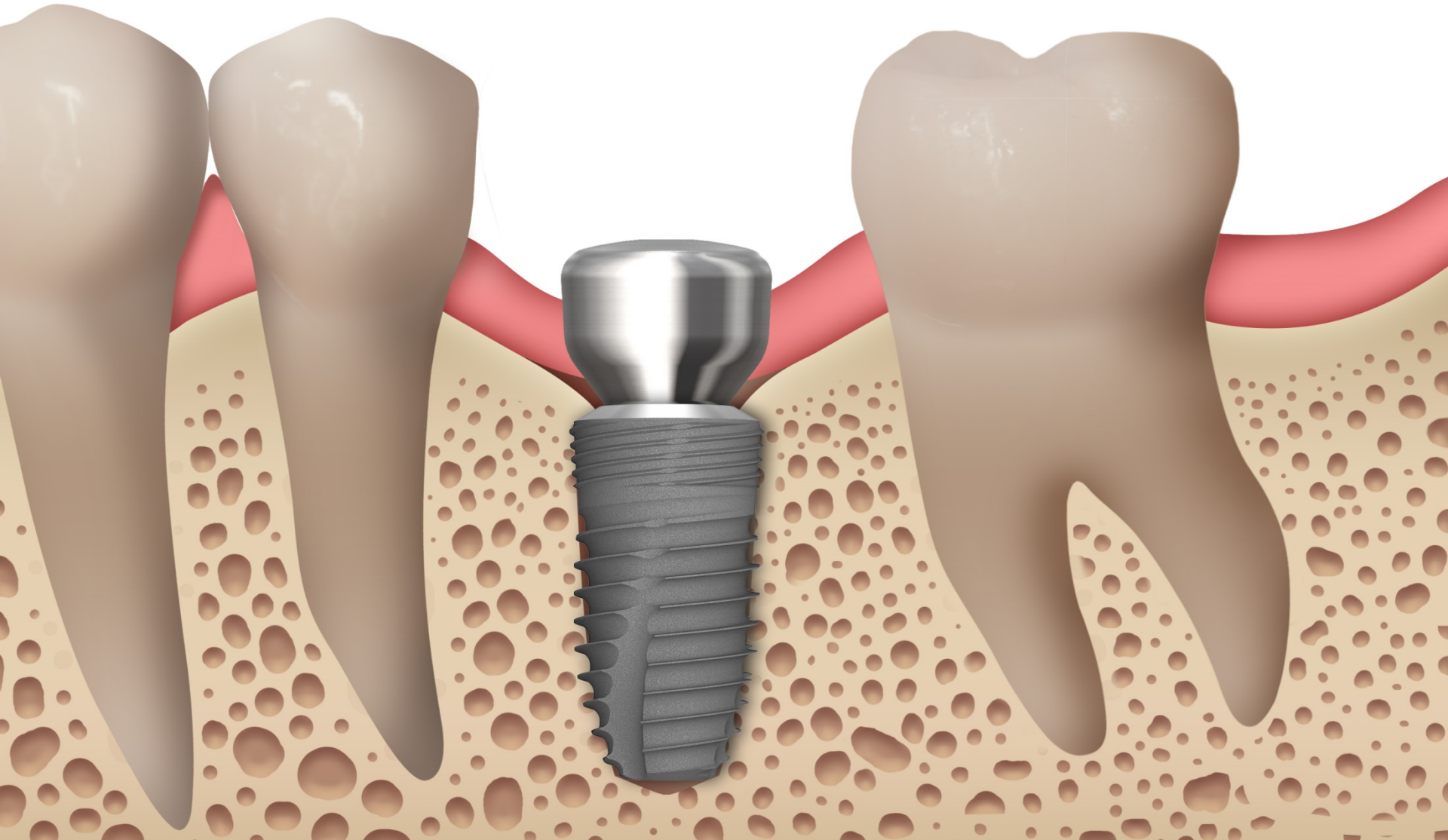
# Healing Abutment Connection

HAB 552035

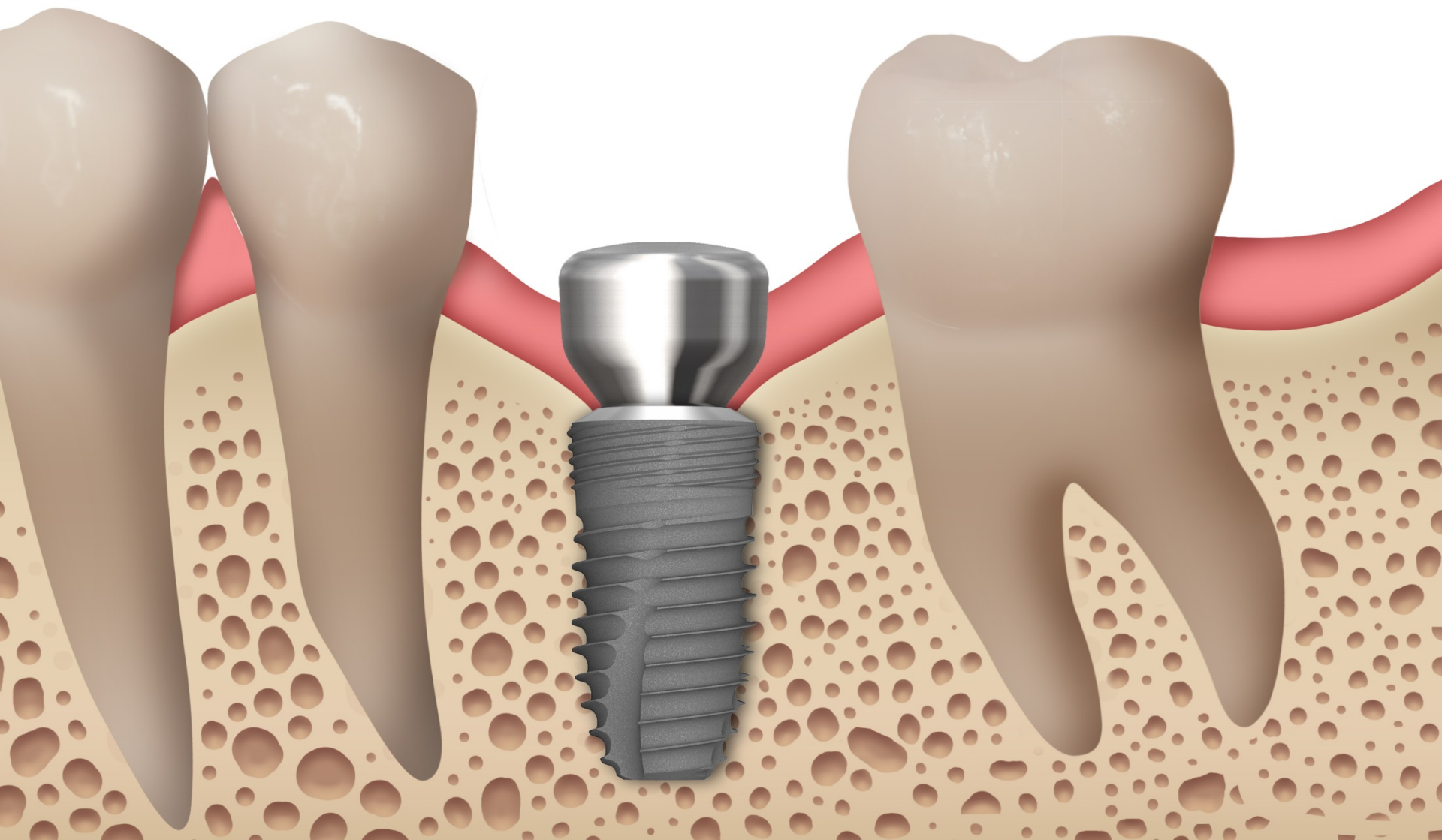
Use no more than 10N·cm of torque



# Post-op



# Healing

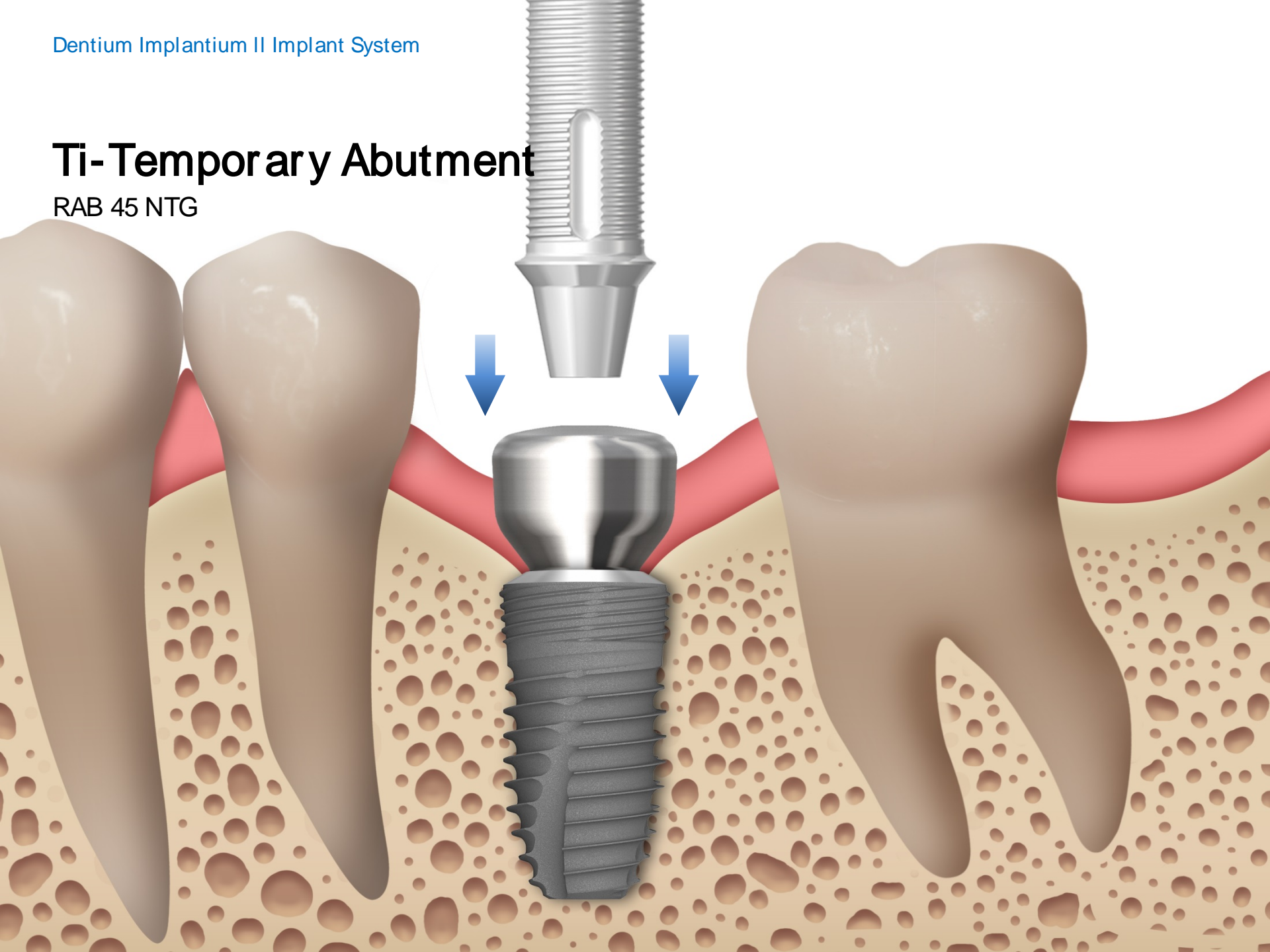




Dentium Implantium II Implant System

# Ti-Temporary Abutment

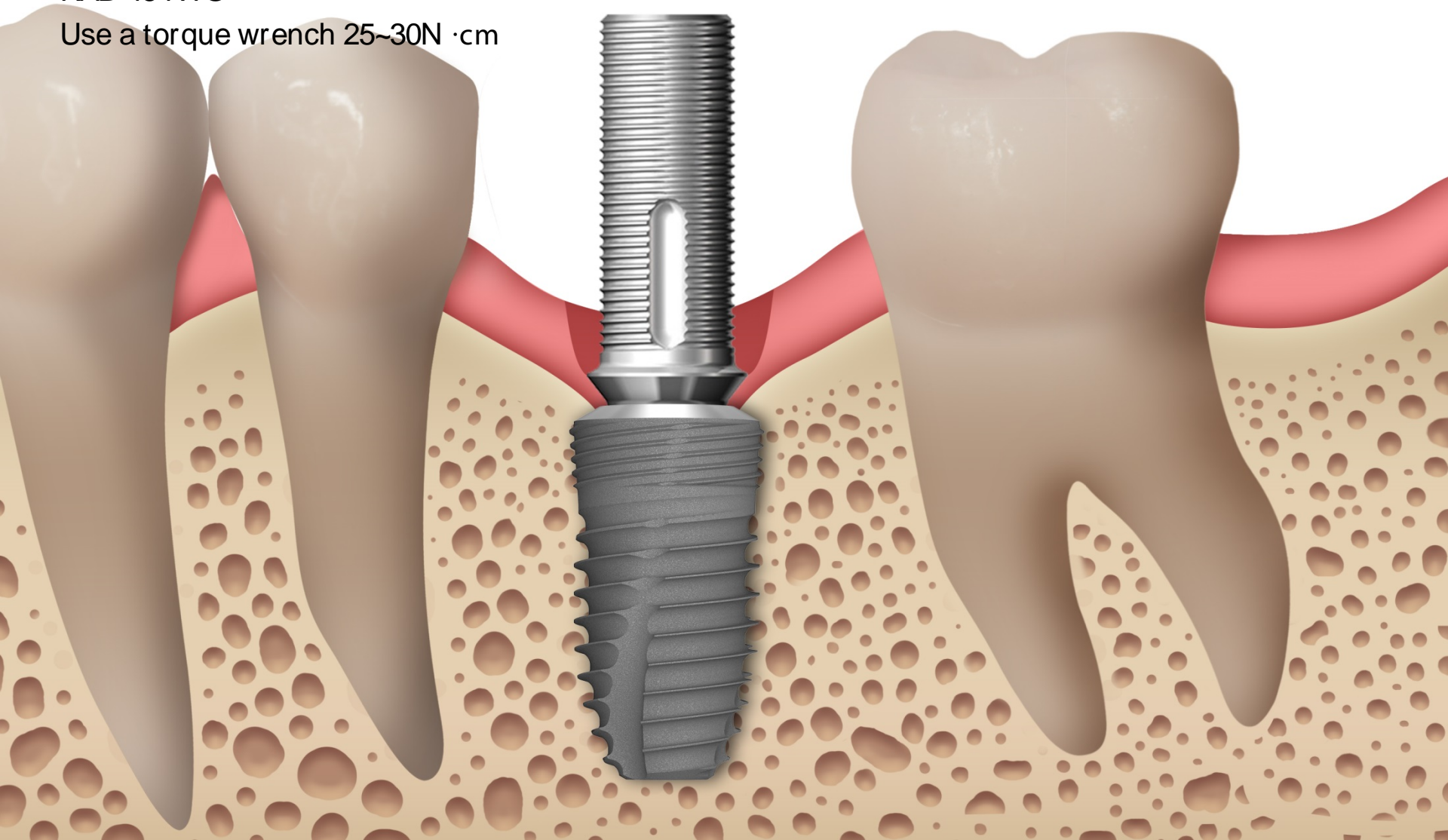
RAB 45 NTG



# Ti-Temporary Abutment Connection

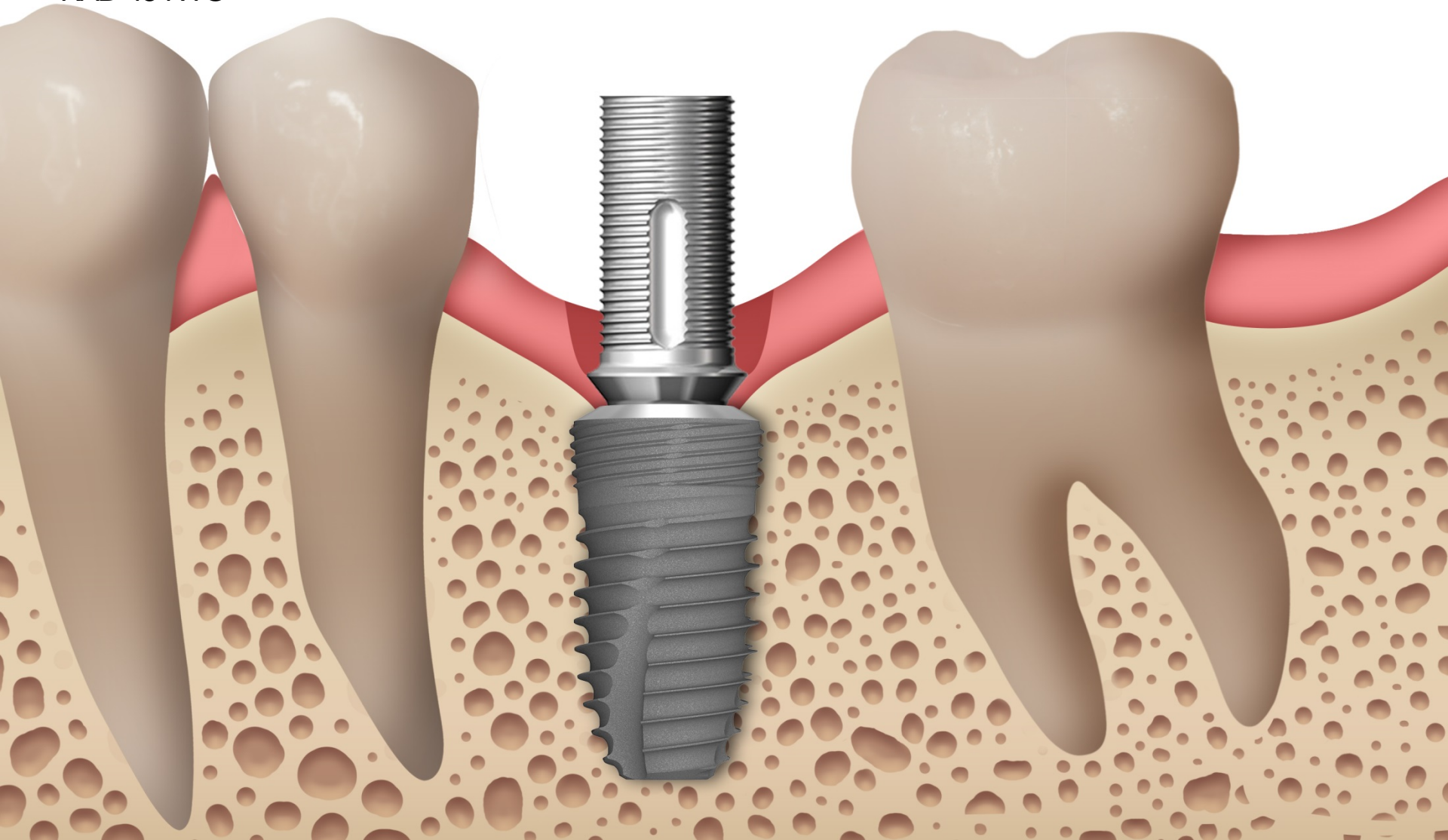
RAB 45 NTG

Use a torque wrench 25~30N ·cm



# Cutting of Ti-Temporary Abutment

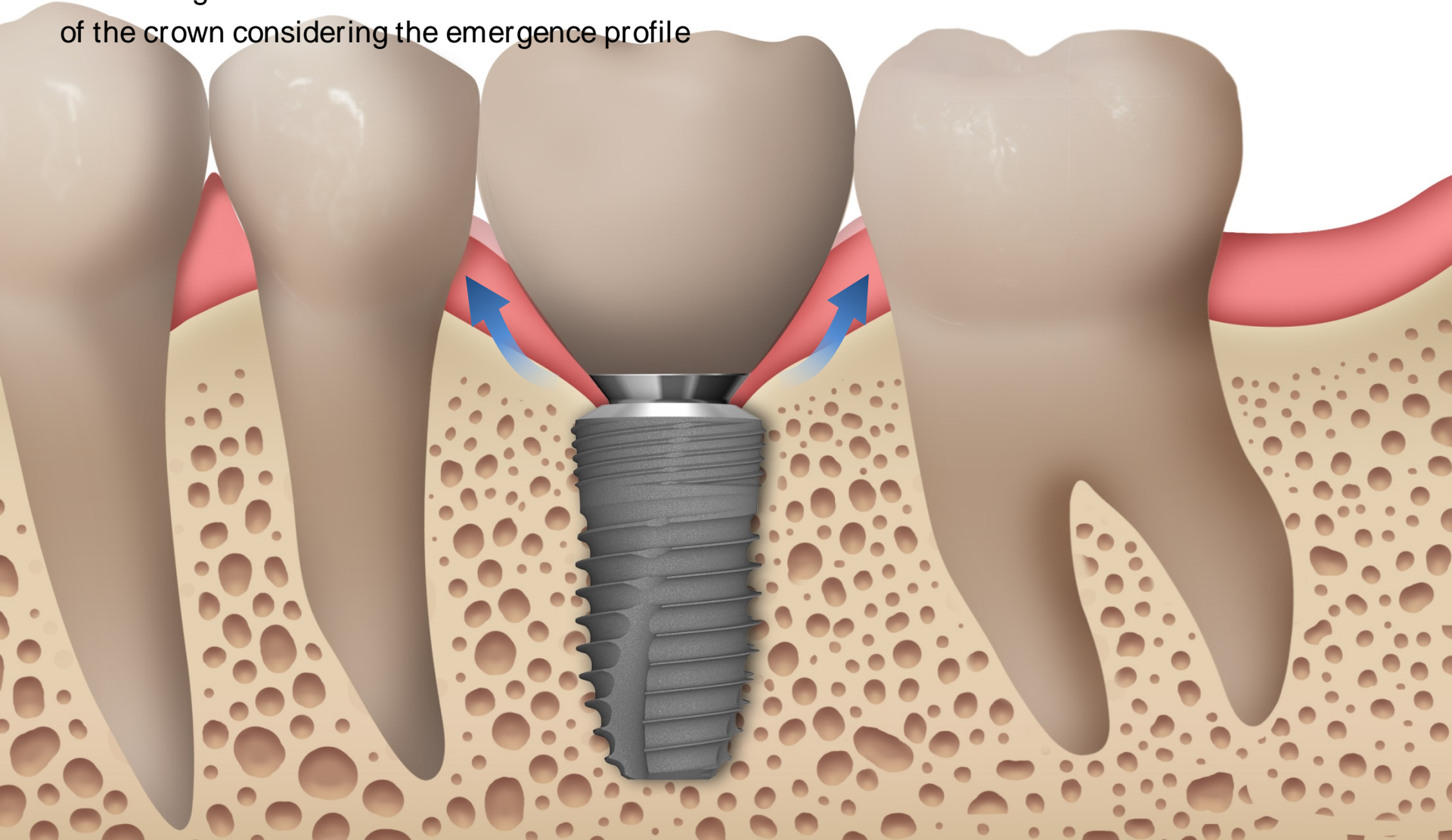
RAB 45 NTG





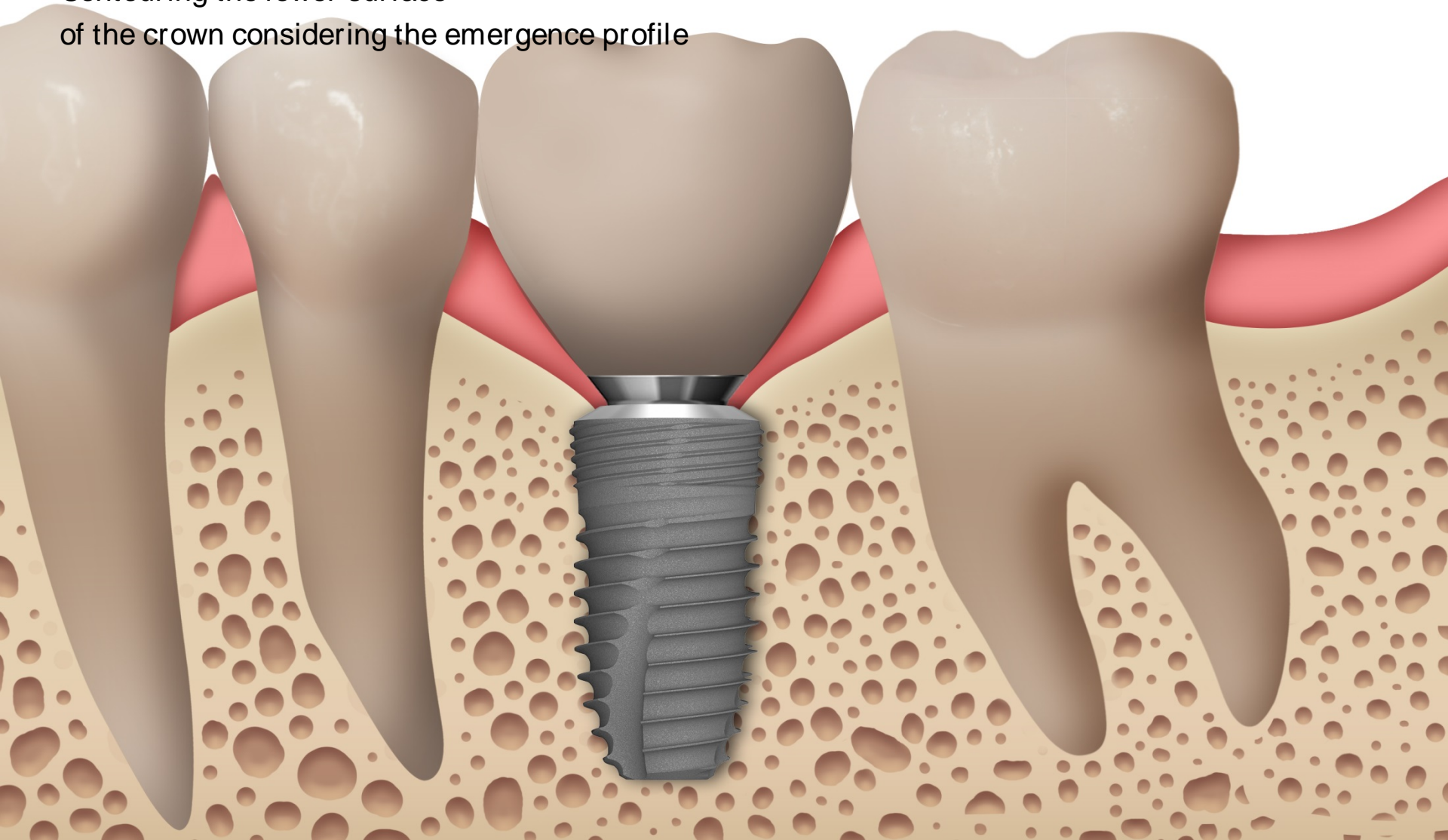
## Provisional restoration

Contouring the lower surface  
of the crown considering the emergence profile



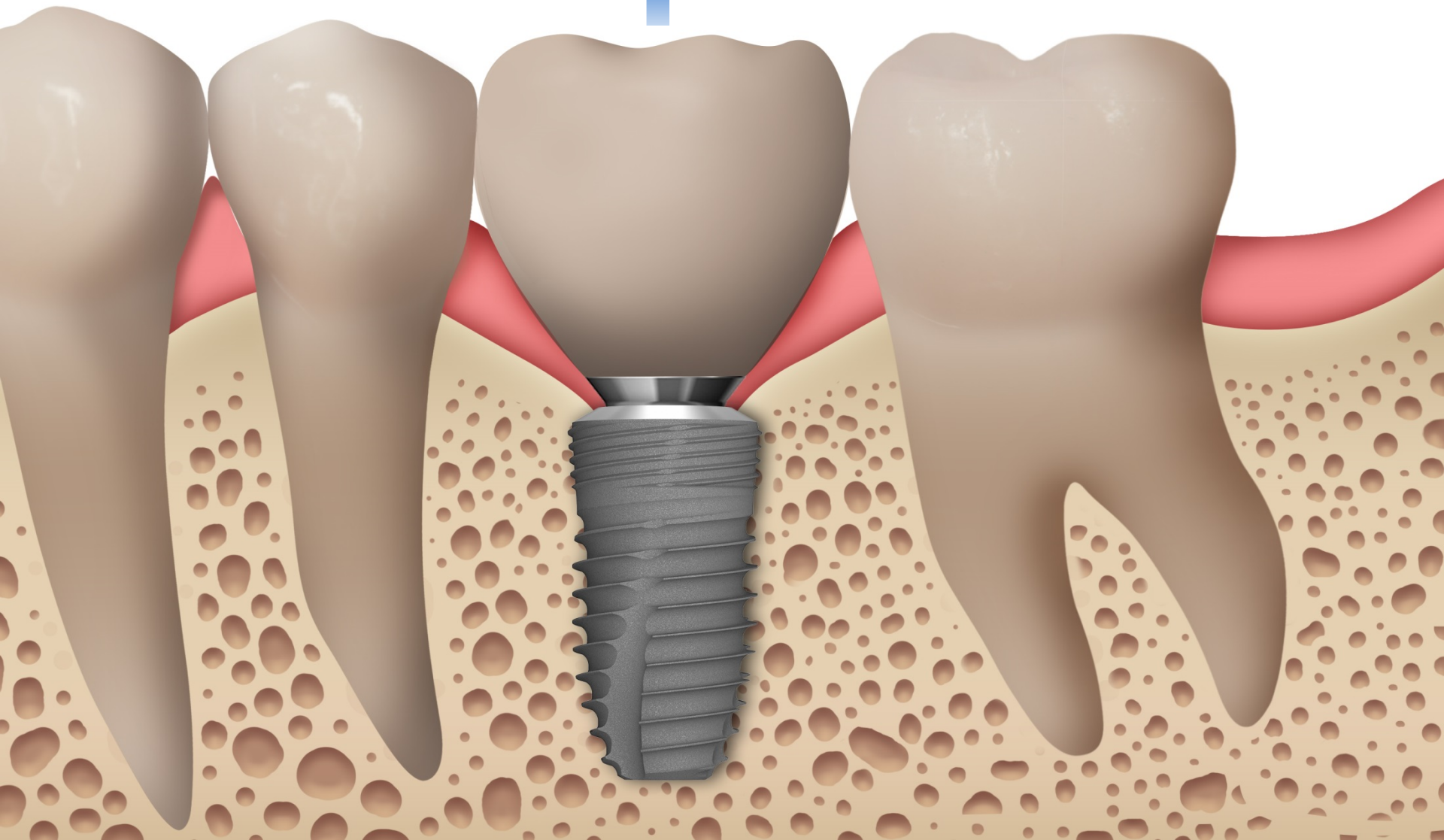
## Provisional restoration

Contouring the lower surface  
of the crown considering the emergence profile





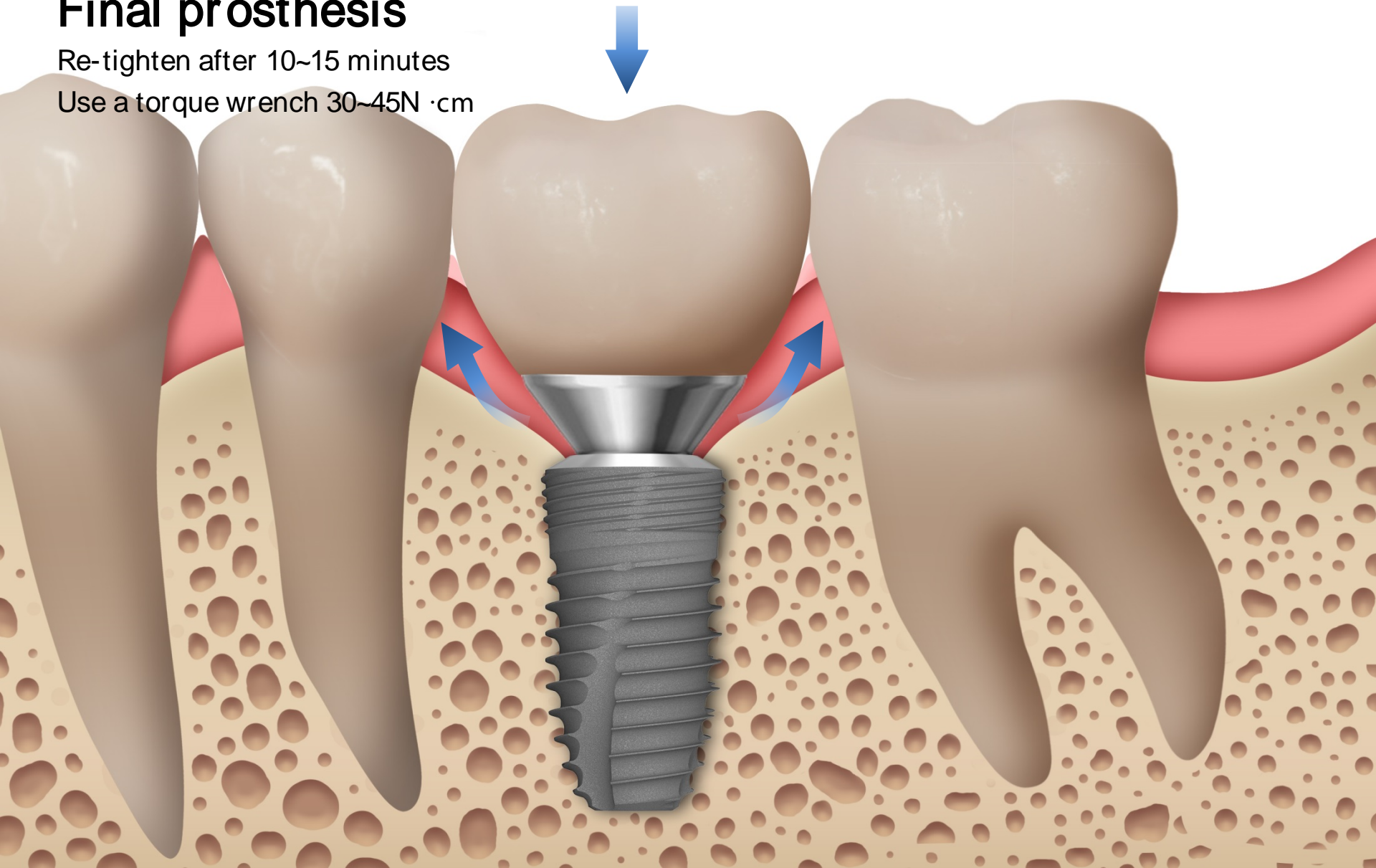
# Removal of Temporary



## Final prosthesis

Re-tighten after 10~15 minutes

Use a torque wrench 30~45N ·cm



## Final prosthesis

Re-tighten after 10~15 minutes

Use a torque wrench 30~45N ·cm

