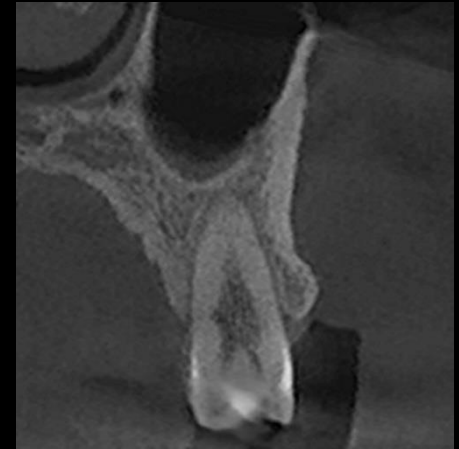


**LIVE & Follow up**

# Immediate implantation with Minimalized Bone Graft



Dr. SM Chung

2024.10.11. (Fri)

# Patient Information

**Age** : 33

**Sex** : Male

## Chief Complaint

: I broke my teeth while eating hard food,  
so I want to get an implant

## Dental History

: #15 Fracture 1 day ago

## Medical History

: None

## Medication

: None

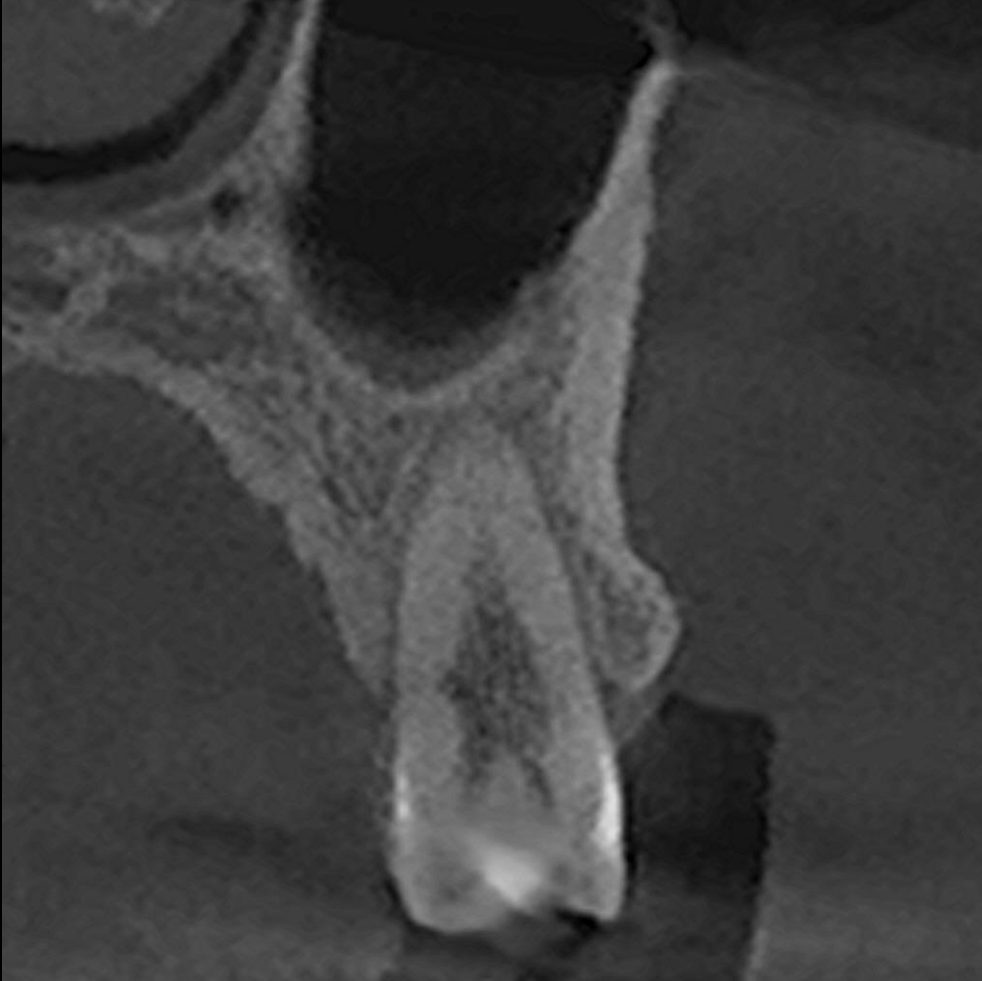


Pre-OP



**R**  
Dentium

Pre-op CT



Pre-op



## Surgery Plan (#15)



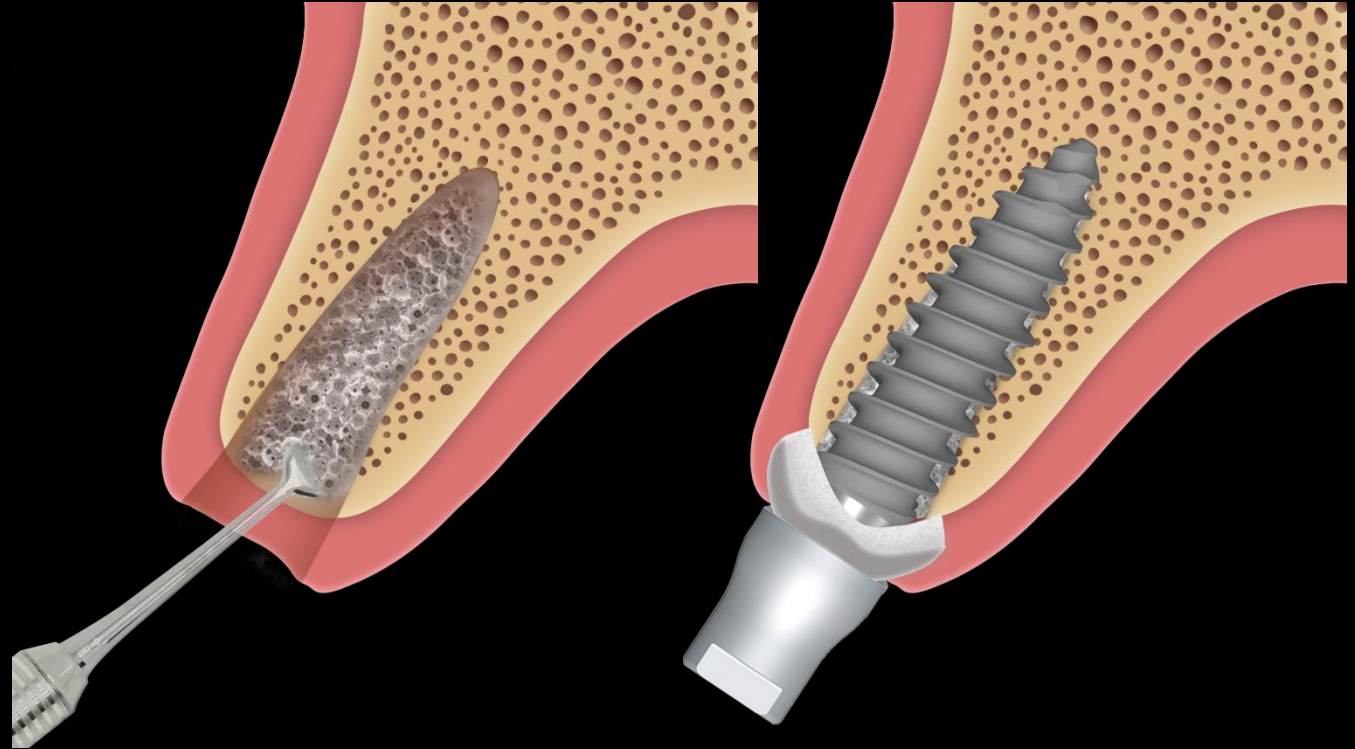
- Immediate Implantation on #15 using **bright Tissue Level**
- Socket preservation using **OSTEON™ Xeno and Collagen Graft 2**

Minimalism in GBR

# Today's Surgery point

✓ **Immediate Implantation with bright TL**

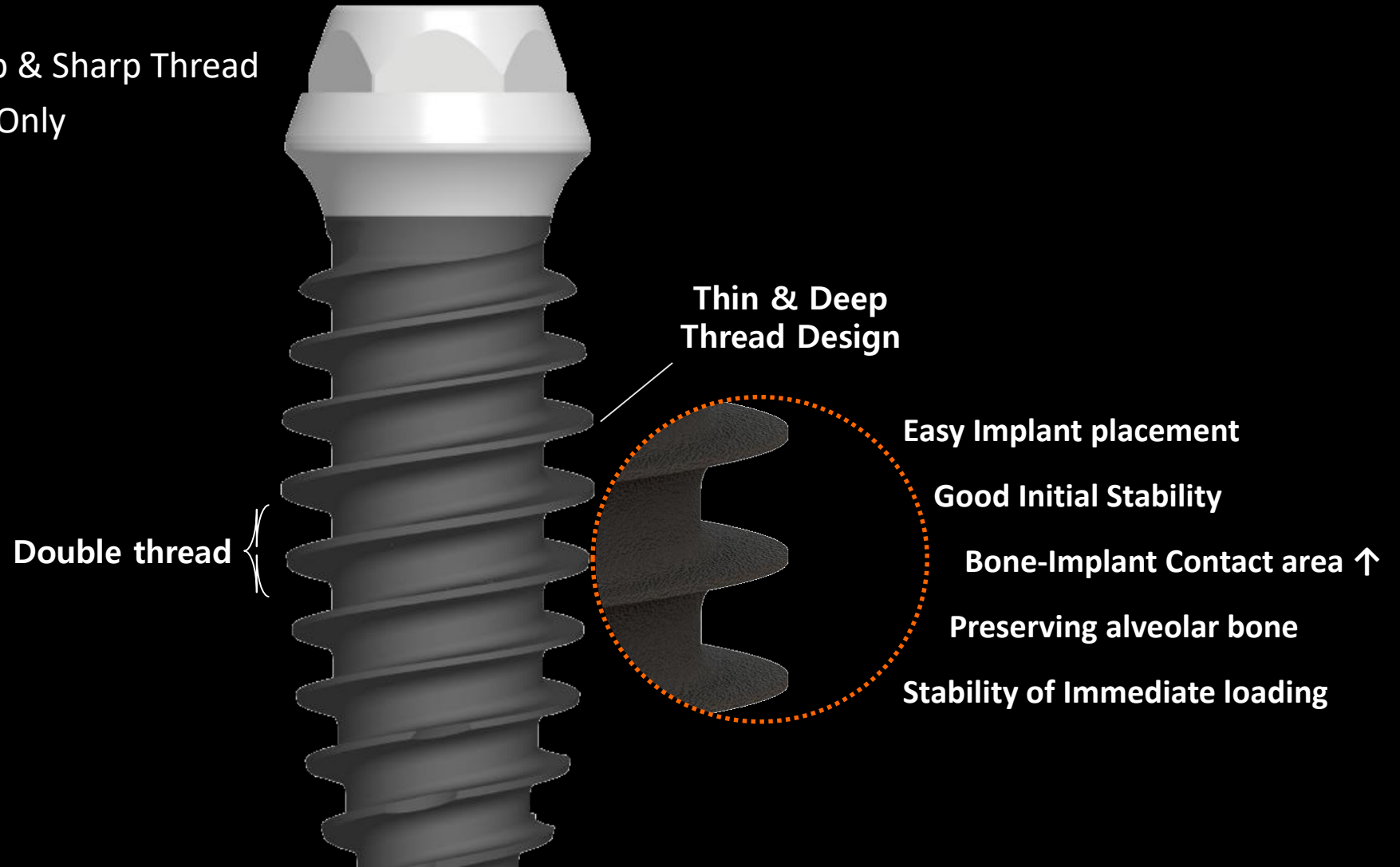
- Gap filling & socket preservation



# bright Tissue Level

For **Simplify Surgical Procedure**

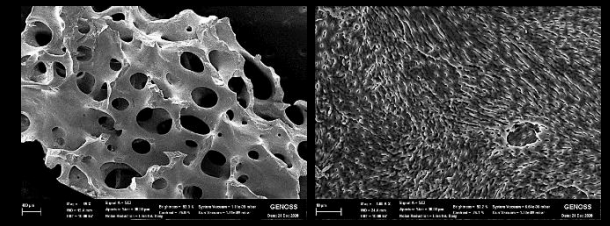
- Thin, Deep & Sharp Thread
- Final Drill Only





# OSTEON™ Xeno

- Natural bovine grafting material with osteoconductivity
- Highly interconnected porous structures similar to human bones
- Complete removal of organic substances



# Collagen Graft 2

- Ridge preservation
- Porcine tendon derived type I collagen
- Faster soft tissue healing by epithelization



## Similar case 1

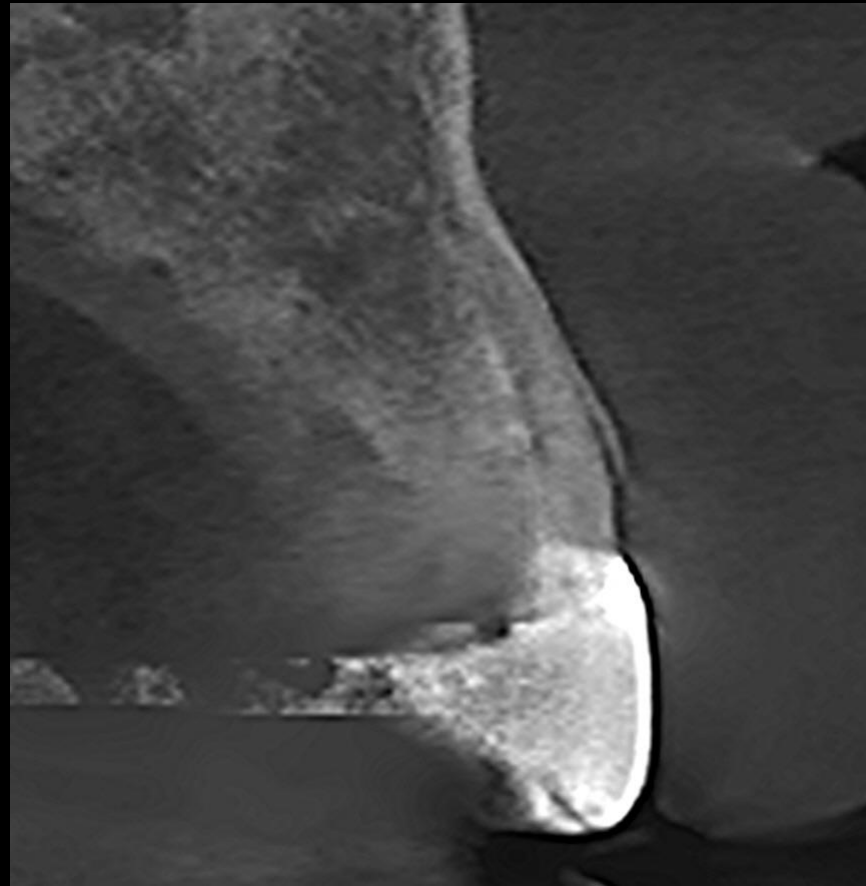
Immediate implantation with socket preservation



Pre-op

## Similar case 1

Immediate implantation with socket preservation



Pre-op CT

**Similar case 1**

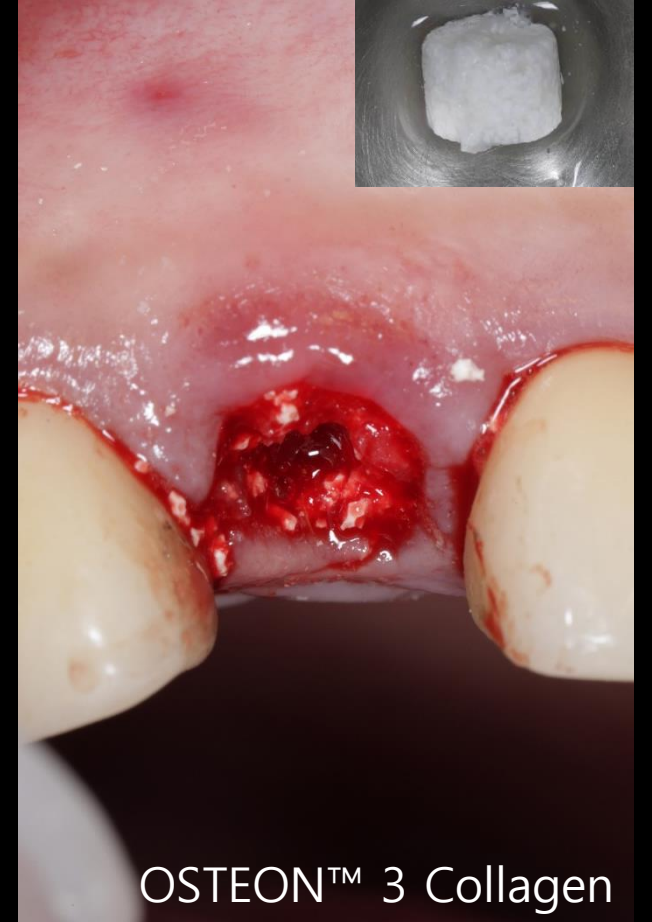
**Immediate implantation with socket preservation**



Pre-op

## Similar case 2

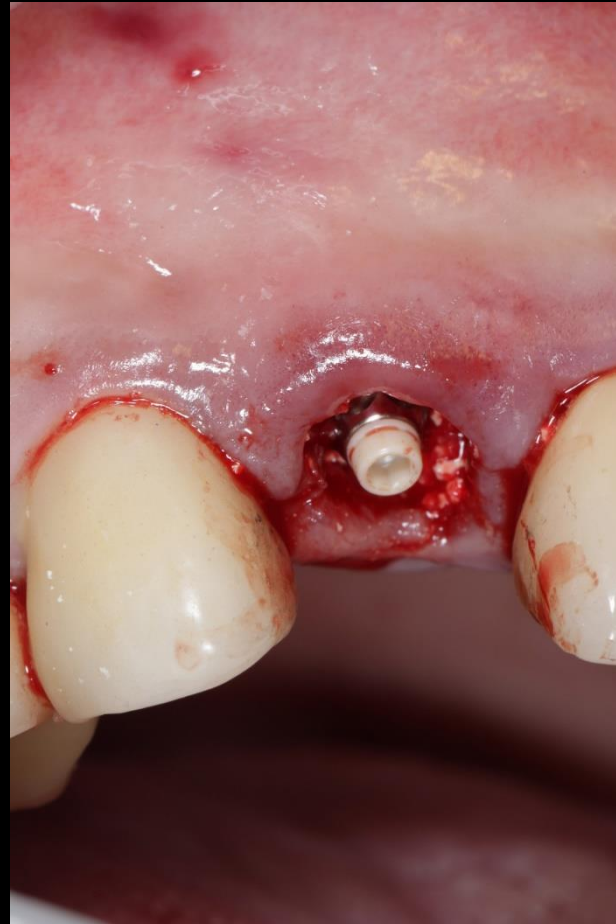
## Immediate implantation with socket preservation



Surgery

## Similar case 2

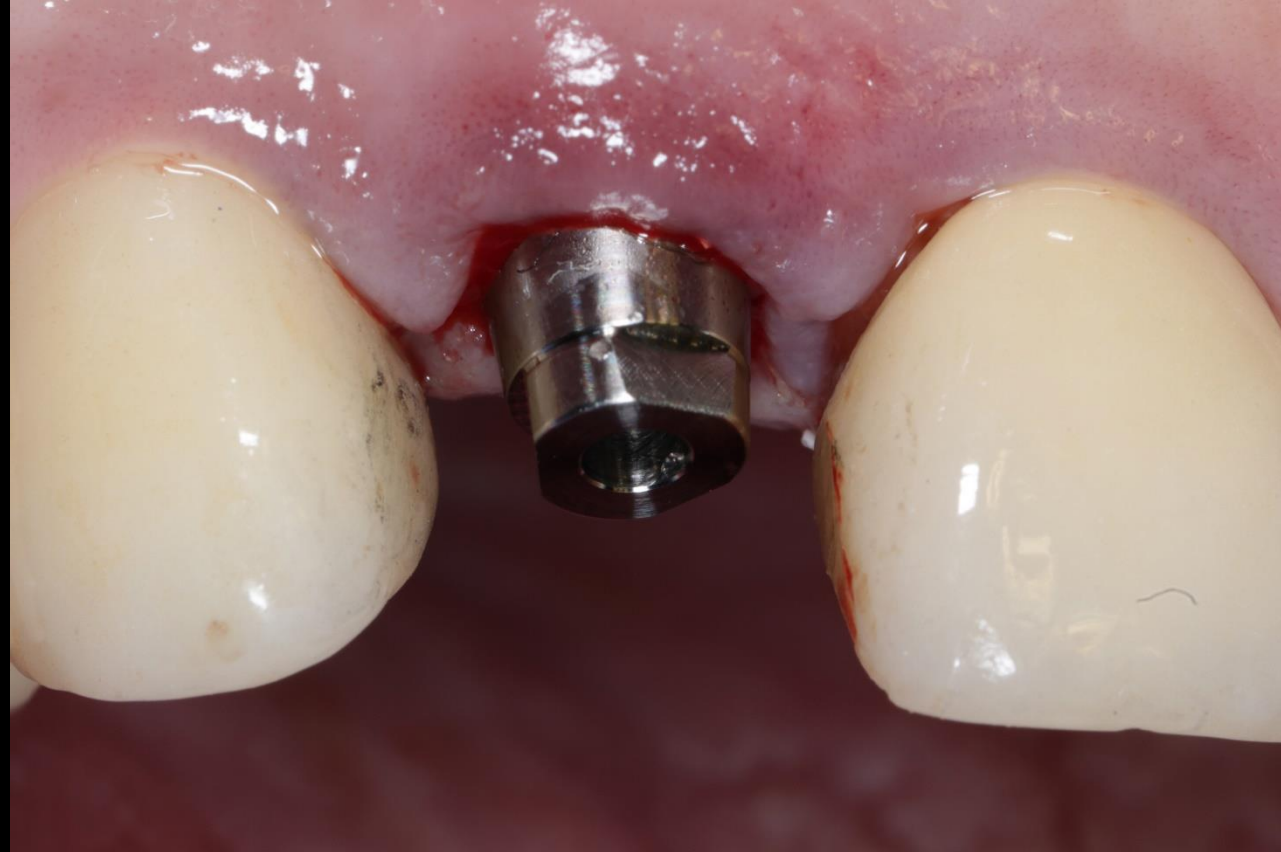
## Immediate implantation with socket preservation



Surgery

## Similar case 1

## Immediate implantation with socket preservation

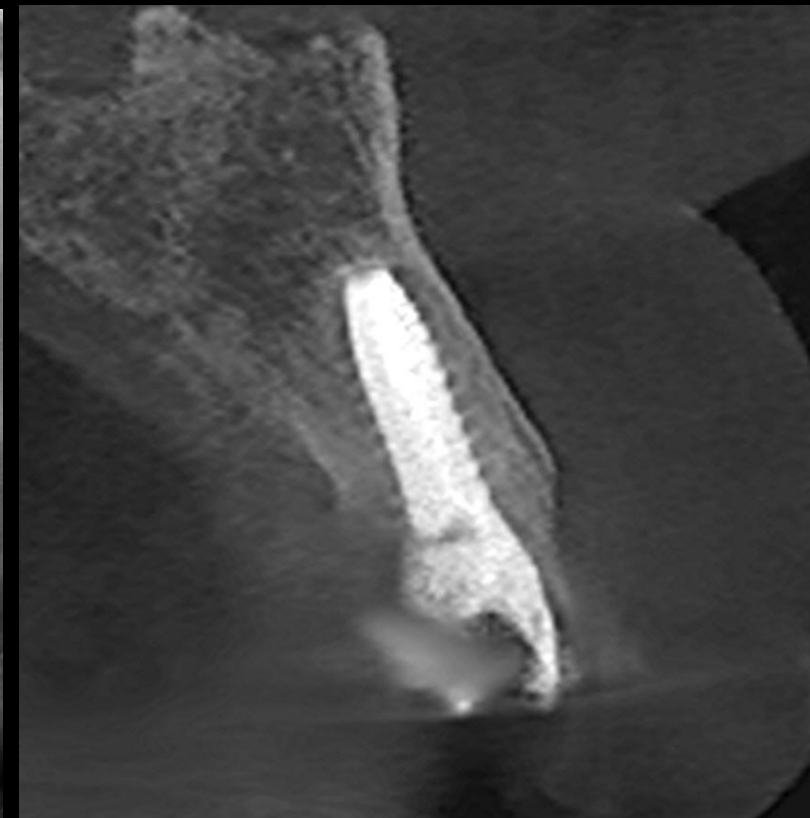
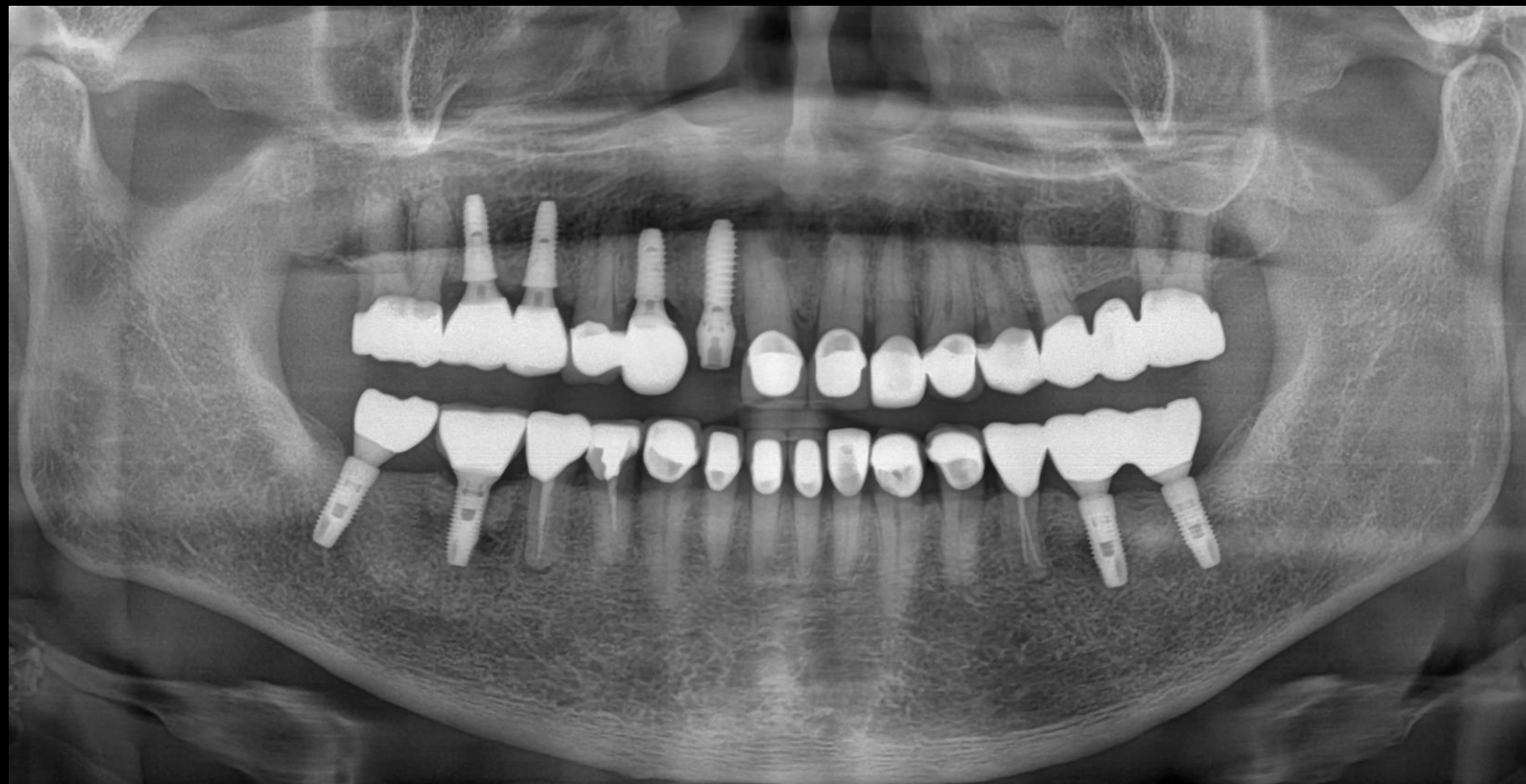


Post-op



## Similar case 1

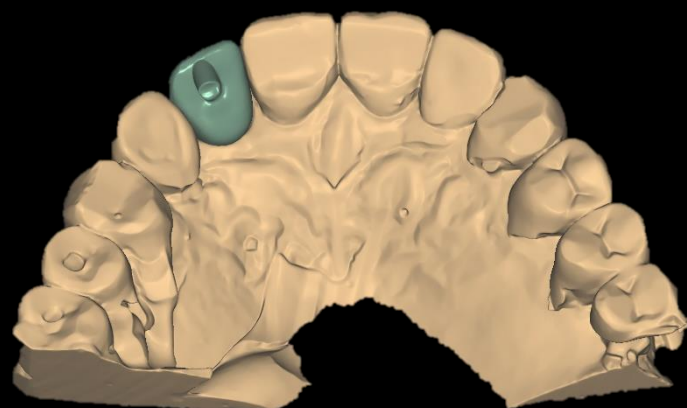
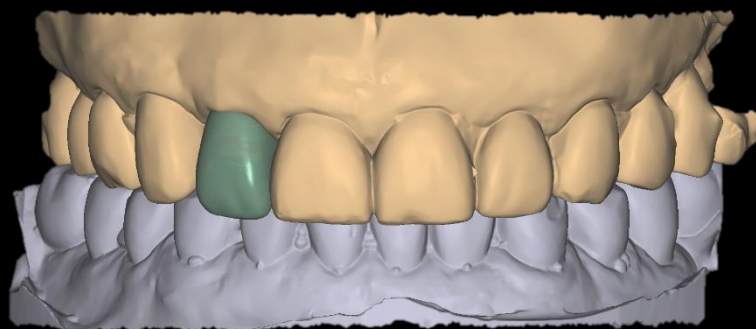
Immediate implantation with socket preservation



Post-op

## Similar case 1

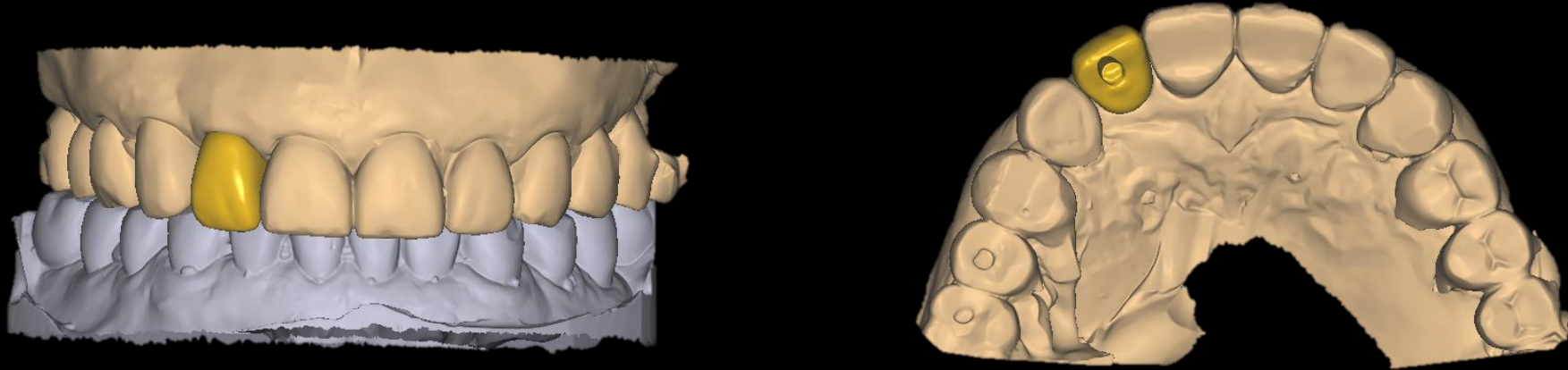
Immediate implantation with socket preservation



IOS, CAD & PMMA Temporary

## Similar case 1

Immediate implantation with socket preservation



Final Impression (B.T.S) & CAD

## Similar case 1

Immediate implantation with socket preservation



Coloring / Glazing

**Similar case 1**

**Immediate implantation with socket preservation**



Final prosthesis

## Similar case 1

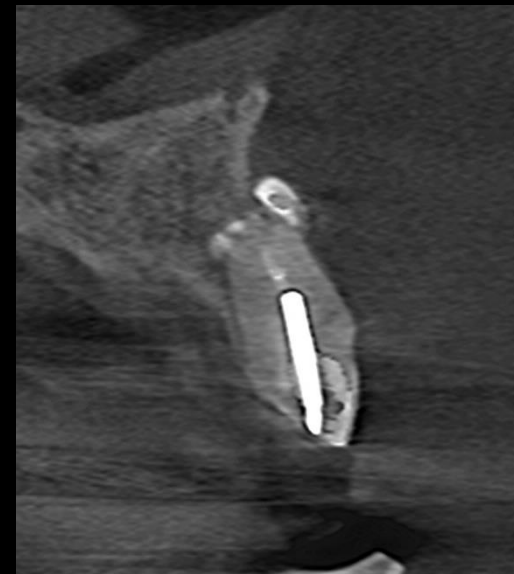
Immediate implantation with socket preservation



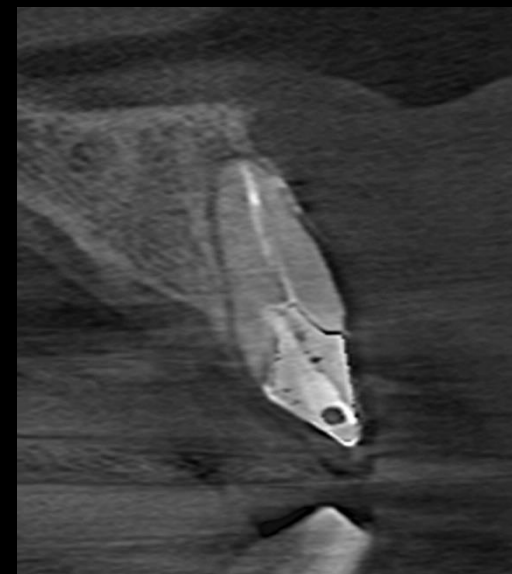
Final prosthesis

## Similar case 2

## Immediate Implantation & Gap Filling



#12



#11

Pre-op

## Similar case 2

## Immediate Implantation & Gap Filling

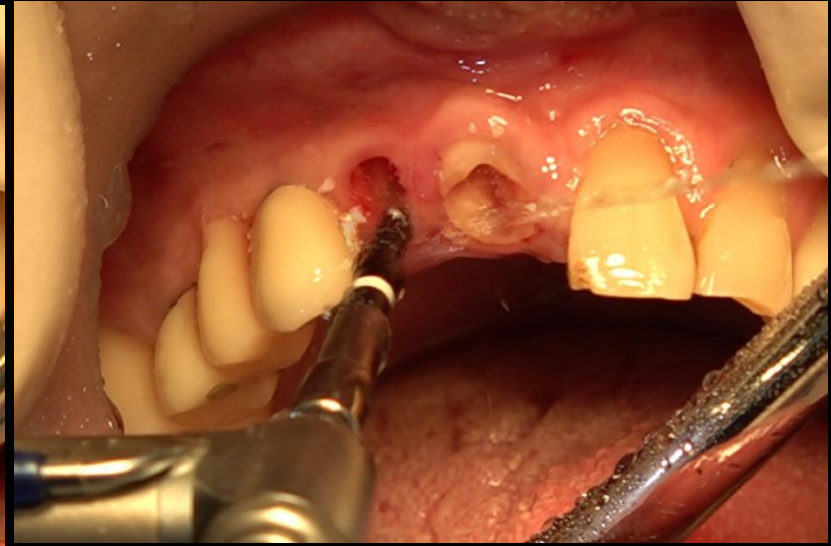
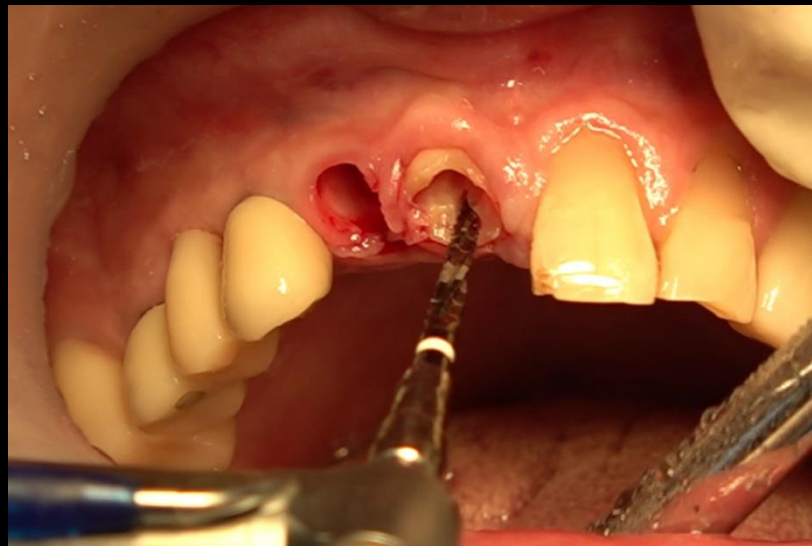
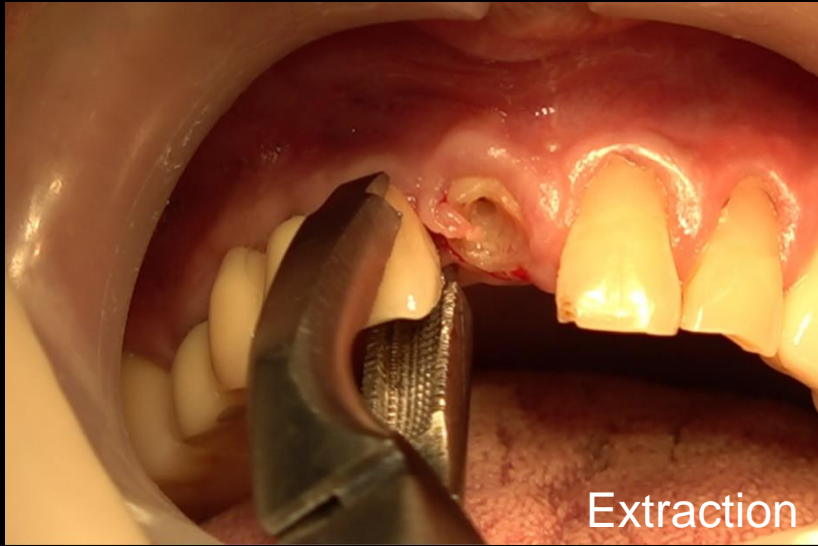


Pre-op



## Similar case 2

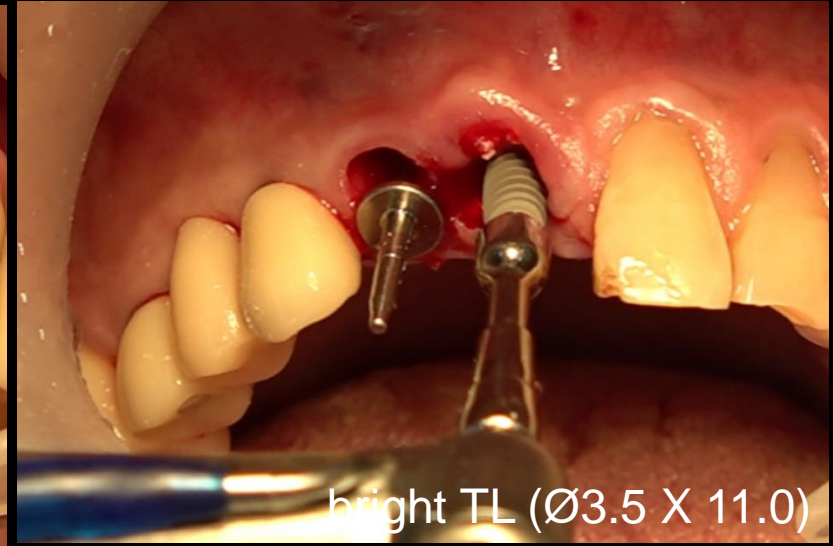
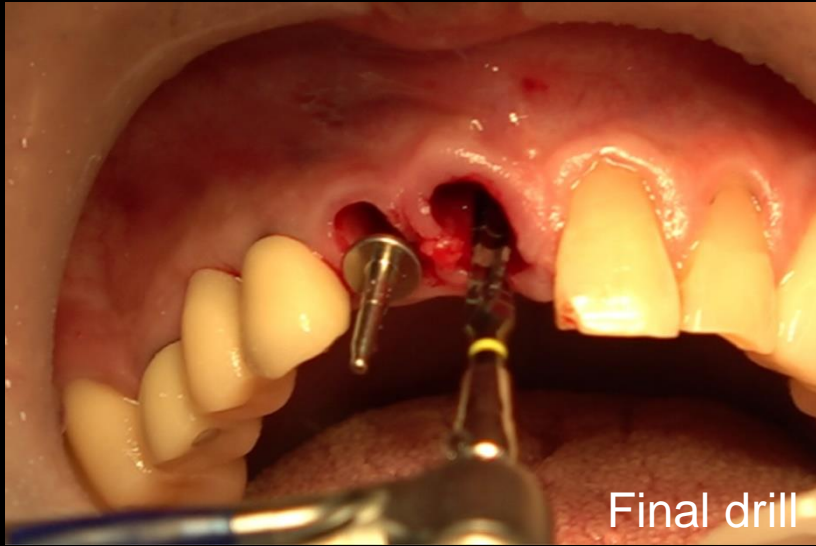
## Immediate Implantation & Gap Filling



Surgery

## Similar case 2

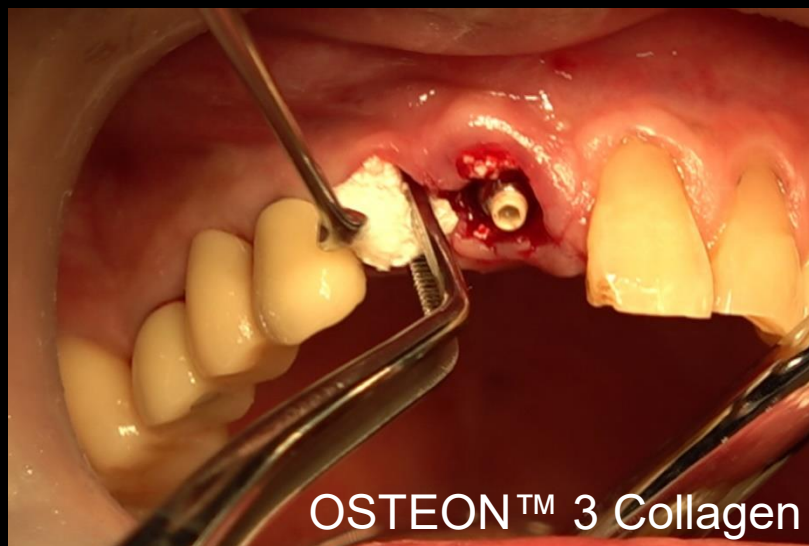
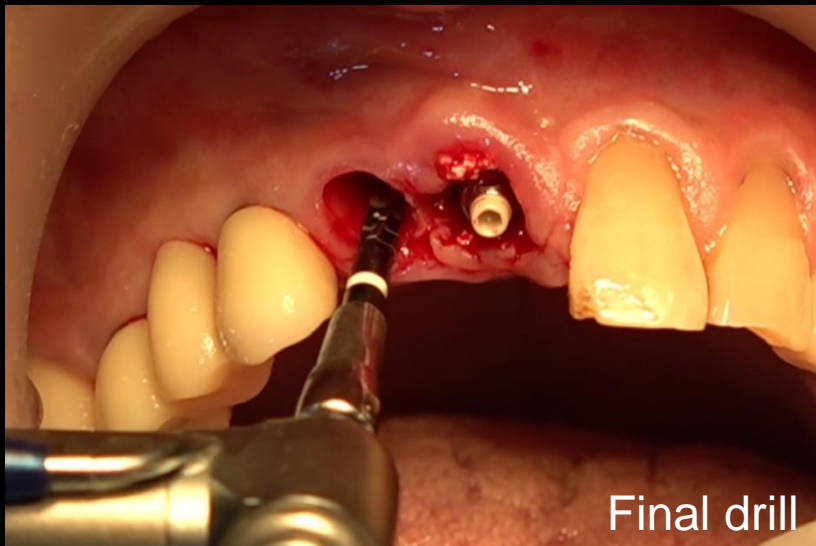
## Immediate Implantation & Gap Filling



Surgery

## Similar case 2

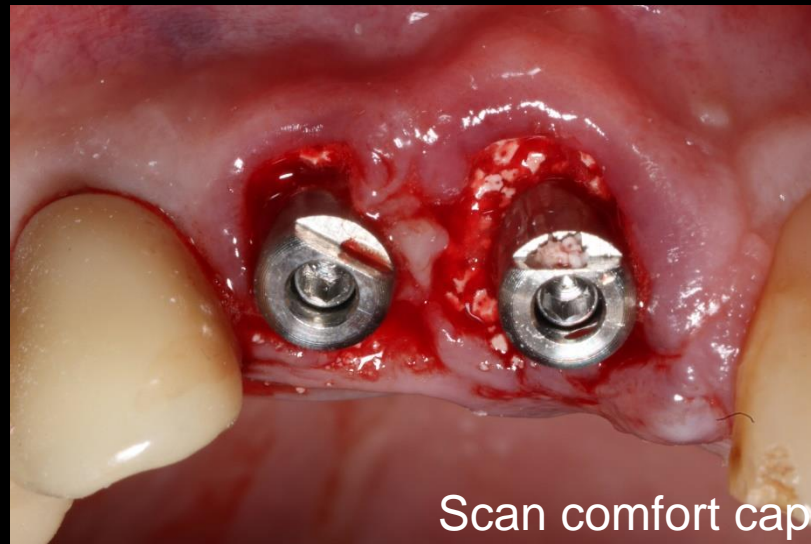
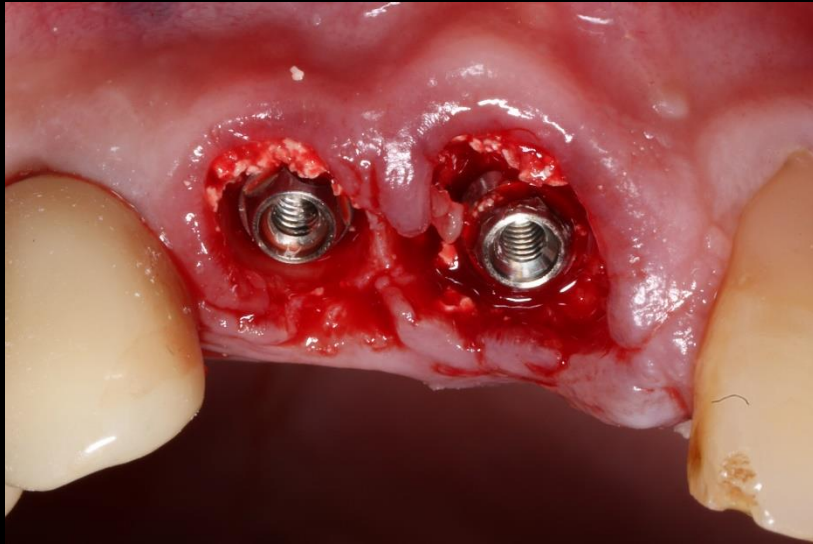
## Immediate Implantation & Gap Filling



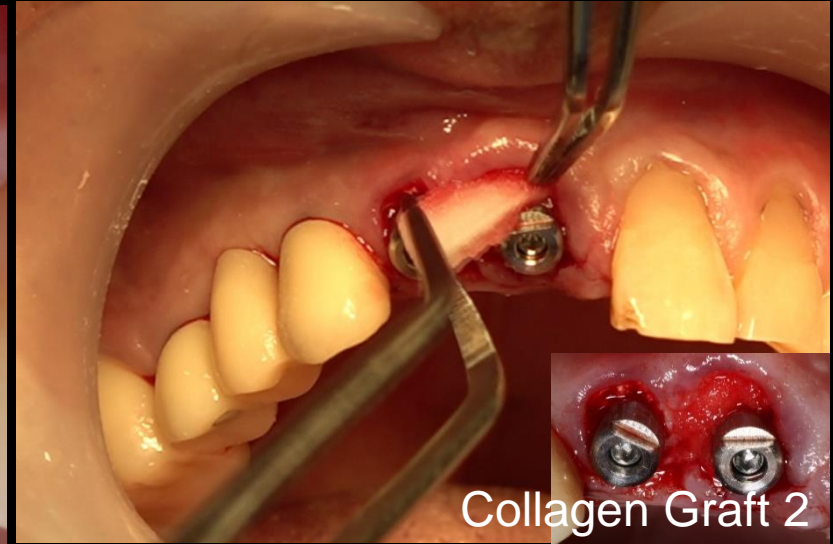
Surgery

## Similar case 2

## Immediate Implantation & Gap Filling



Scan comfort cap

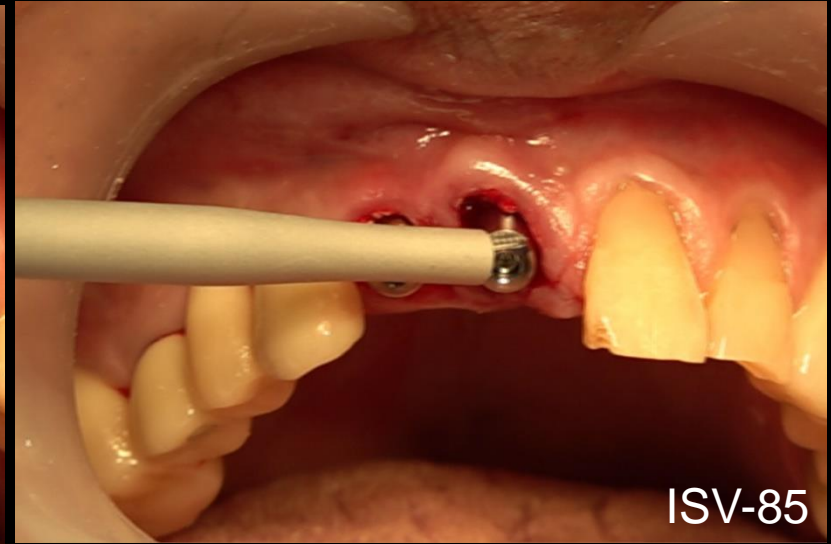
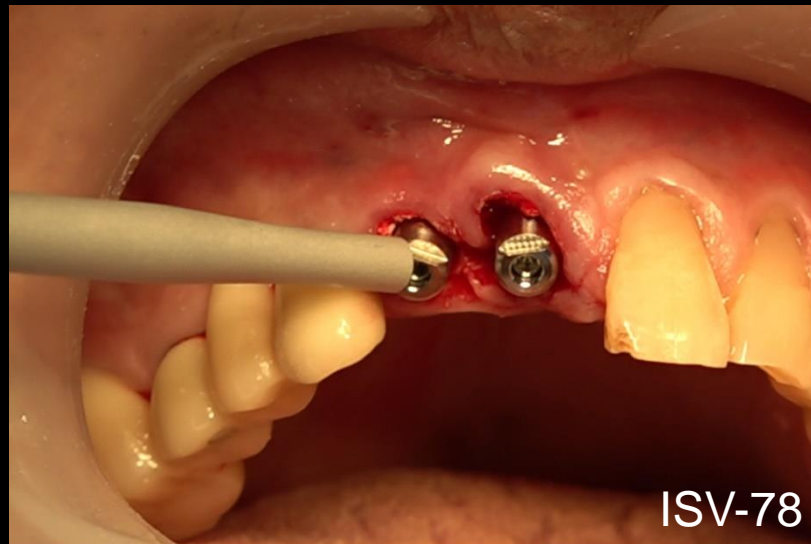


Collagen Graft 2

Surgery

## Similar case 2

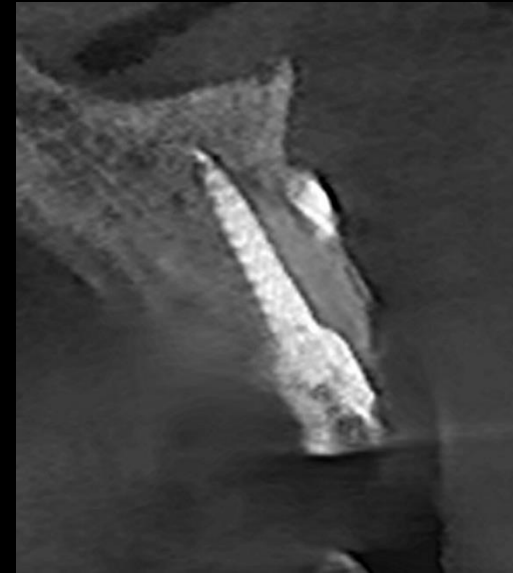
## Immediate Implantation & Gap Filling



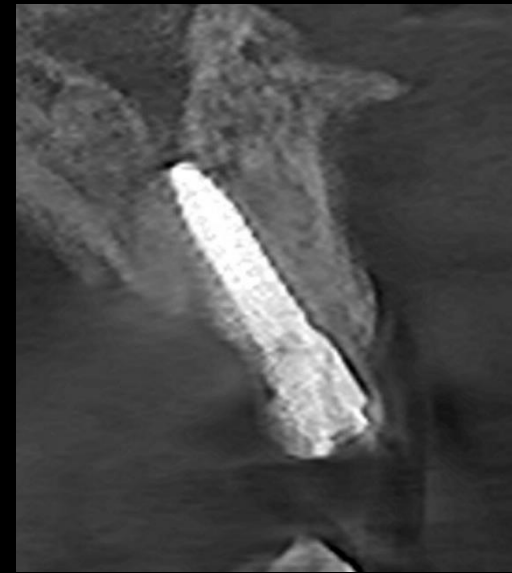
Surgery

**Similar case 2**

**Immediate Implantation & Gap Filling**



**#12**

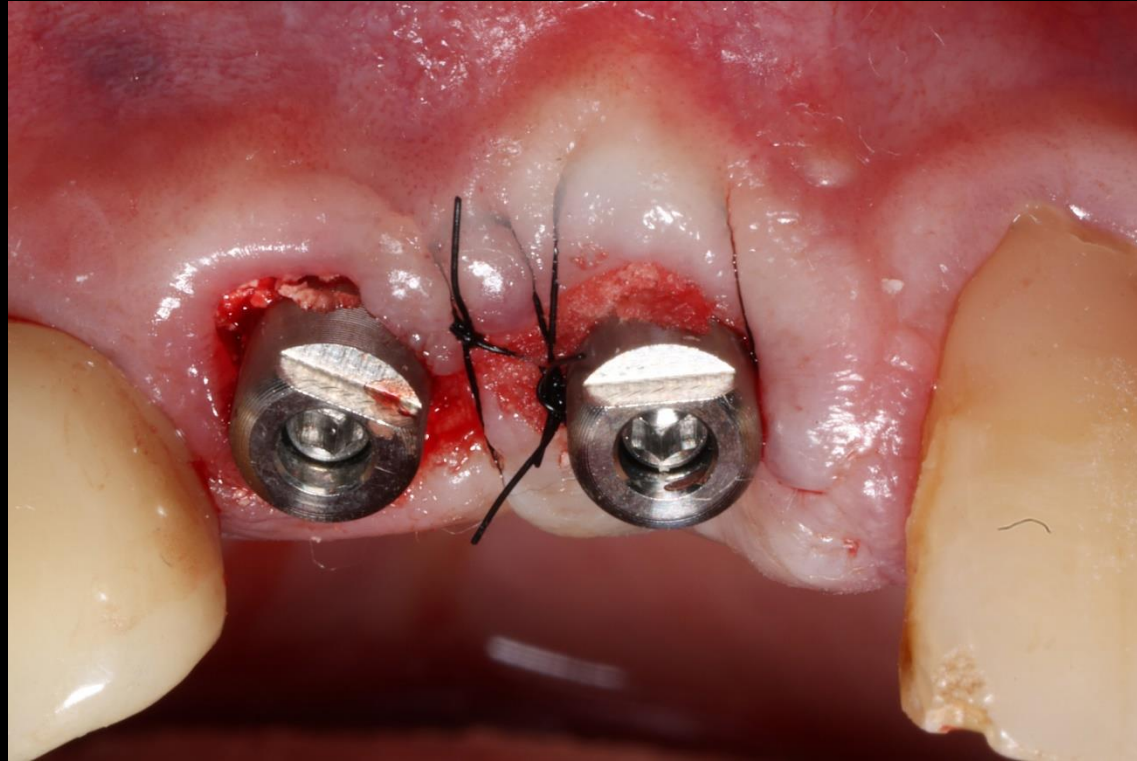


**#11**

Post-op

## Similar case 2

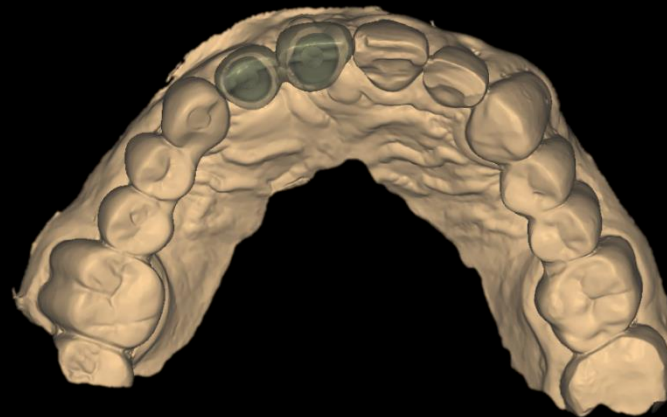
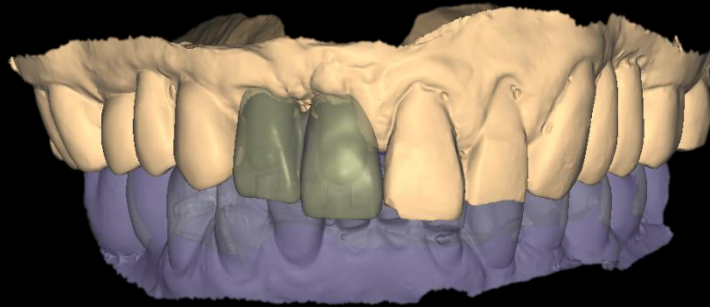
## Immediate Implantation & Gap Filling



Post-op

## Similar case 2

## Immediate Implantation & Gap Filling



IOS, CAD & PMMA Temporary



## Similar case 2

## Immediate Implantation & Gap Filling



Provisional restoration

## Similar case 2

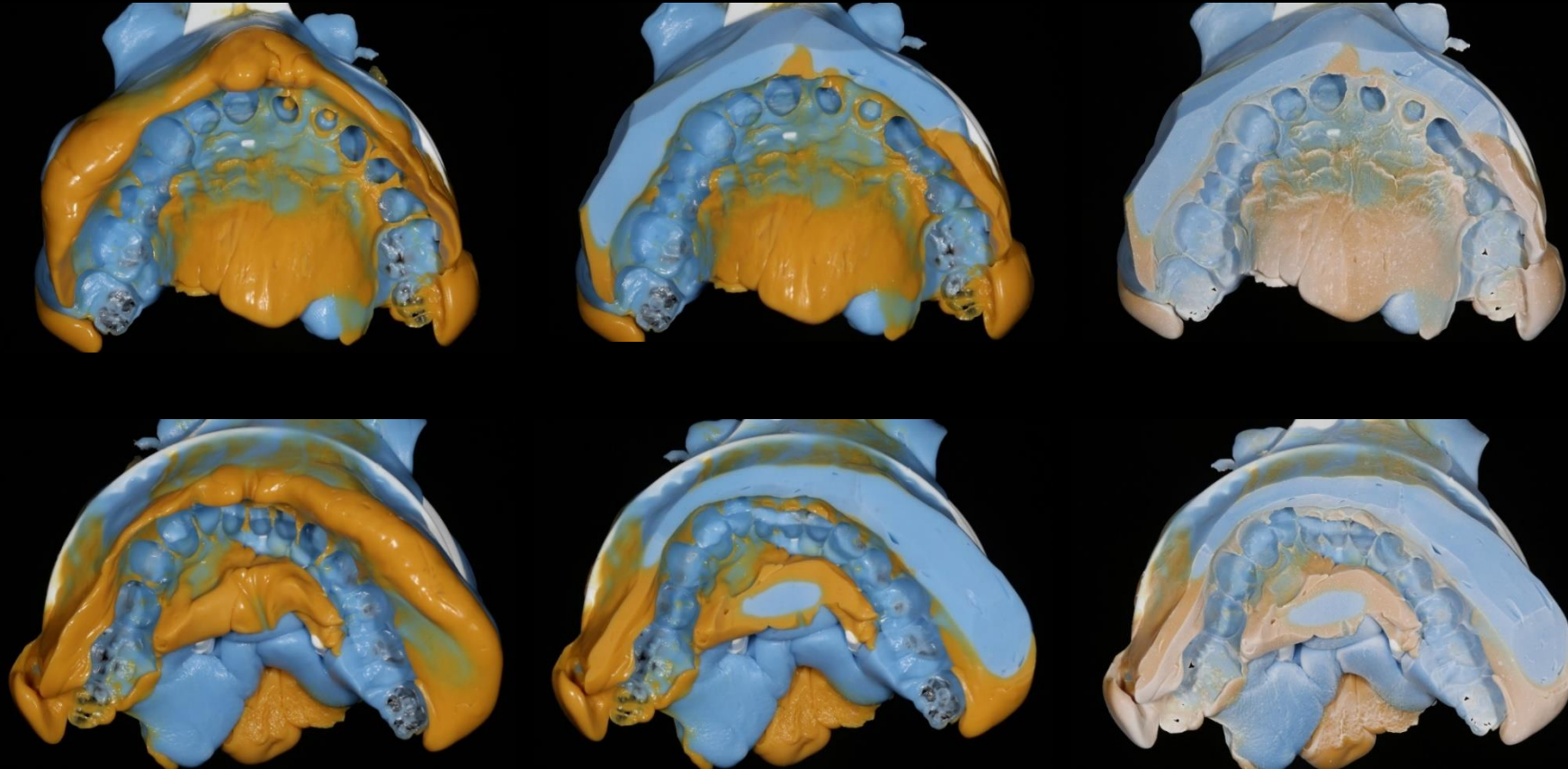
## Immediate Implantation & Gap Filling



Final impression & Shade taking

**Similar case 2**

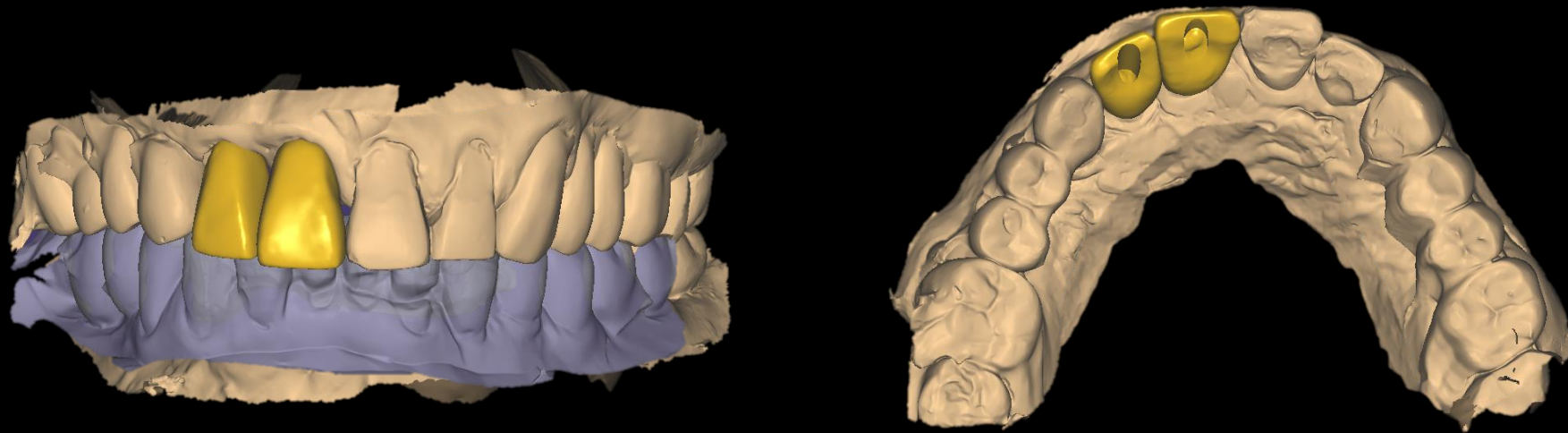
**Immediate Implantation & Gap Filling**



Bite Tray Impression & Impression Scan (B.T.S)

## Similar case 2

## Immediate Implantation & Gap Filling



CAD (Final prosthesis)

## Similar case 2

## Immediate Implantation & Gap Filling



Milling / Sintering / Glazing

**Similar case 2**

**Immediate Implantation & Gap Filling**



Final prosthesis

## Similar case 2

## Immediate Implantation & Gap Filling



Final prosthesis

